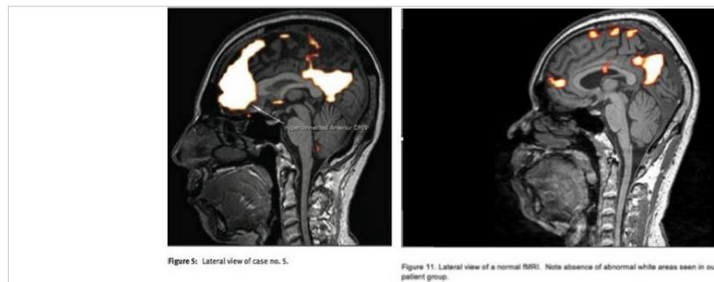


EHS (ELECTROHYPERSENSITIVITY) QUESTIONNAIRE

(Link to study questionnaire at bottom of page 2 of this cover letter.)

Hello and thank you for participating in our EHS study. You must have EHS or be the parent or guardian of a person with EHS filling this out on their behalf in order to participate in this study.

The study/s that will be produced from your answers to this questionnaire are from the same team that recently decimated the myth that EHS is a psychological problem by producing the ground breaking study showing EHS in pictures on an fMRI, finally making the invisible visible!



Exposure to wireless devices and infrastructure is believed to have been the cause of the EHS in the cases.

You may notice the questions have a broad range. This is because we plan on publishing multiple papers from the information gathered from this one questionnaire. Whether or not the paper/s are ever published, it is important to know that your name will never be published in any of the paper/s and any and all information will be kept strictly confidential.

You may also notice many of the questions in the beginning are focused on the brain. This is because our lead scientist Gunnar Heuser, MD, has over 50 years experience in neurotoxicology, with special focus on exposure to chemicals and now electromagnetic fields. Although our first paper from this questionnaire may be focused on the brain or heart, there will be other forthcoming studies regarding other organs and EHS based on your answers to this questionnaire, as well as public health information to help guide governmental bodies in terms of special needs for current EHS people (such as housing, finances, etc.) and the possible dismantling of government funded programs involving wireless radiation and the public in the future.

Because of formatting issues with Constant Contact (our email platform) this cover letter must be presented separately from the survey, so the link to the actual survey is below at the bottom of this cover letter, just scroll down.

It may take an hour or so to complete the questionnaire, depending. There are 54 questions total, but the system will take you right back to where you left off should you run out of time and need to come back later.

Our aim is to make this as large a study as possible, so please pass this email on to anyone you might know who has EHS and please print this cover letter along with

the questionnaire and mail to any EHS who may wish to participate but cannot because they are too sensitive to use the computer. Numbers count in studies, so we are aiming as high as possible in terms of participants. Your help with this is much needed and greatly appreciated.

If your EHS is too sever to use a computer and you are filling this out by hand, please make sure all copies sent to us be extremely legible, in dark ink and good enough quality to be able to be uploaded to a computer and still be legible. Illegible questionnaires will have to be re-written by the person filling them out, or will unfortunately have to be discarded and we do not want to have to do that, so please make sure it is really legible if filling out by hand.

Parents of children with EHS are encouraged to participate in this questionnaire.

Mailing address for EHS unable to use a computer is:

Attn: Study
Peoples Initiative Foundation
101 S. Topanga Cyn. Blvd.
#586
Topanga, CA
90290
USA

EHS is an international epidemic, so please participate regardless of what country you live in.

Thank you so much for your help and for mailing hard copies to your EHS friends who are too sensitive to use a computer.

[Please click here to take the survey](#)

Please direct any and all questions about the questionnaire/study to:

Liz Barris
310-455-7530 (direct) or 310-281-9639 (voice mail in case I move)
contact@thepeoplesinitiative.org

With hope and action,

Gunnar Heuser, MD, Founder,
www.EMFdoc.com,
Liz Barris, Founder,
www.PeoplesInitiativeFoundation.org
www.CitizensForARadiationFreeCommunity.org
www.StopSmartGrid.org
www.AmericanAssociationForCellPhoneSafety.org