

From Research...

...direct to education...

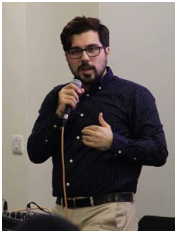


*“the Institute’s mission reinforced the importance of academic research having a practical impact”*

The Woolf Institute’s approach is to integrate research with practical education that targets diverse audiences. Alongside fully funding some of our Masters students and PhD researchers, who take their degrees with the University of Cambridge, we also waive the fees for some students on our online courses, which have a world-wide reach. The individuals who have benefited from an education at the Woolf Institute go on to foster dialogue between people of different faiths in their own communities and work. Thus, donations supporting our researchers and students not only allow us to continue our research into interfaith living and society, they also have benefits far beyond the Institute itself.

You can decide exactly which part of the Institute’s work you wish to support and how much and how often you want to give. Your donation will go directly towards improving relations between religion and society through research and education. Your gift is hugely valuable to us, which is why we will keep you informed and involved with our work, sending you updates and inviting you to events.

# ... on to practical application



My MPhil course provided opportunities to see each topic from different perspectives, which is a significant achievement in the field of Muslim-Jewish relations. All sides are presented, and students have to form their opinion independently. This MPhil course has been a highlight in my life.

Mohammad Shomali, MPhil alumnus  
Gates Scholar, PhD student, University of Cambridge



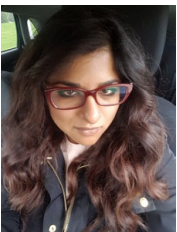
I am running a programme designed to empower Ethiopian women to reach their academic potential. I advance towards this role with a prayer that I will be able to pass on what I received during my studies at the Woolf: to provide these women with the trust and tools to fulfil their potential and grow confident in themselves as intelligent, capable and creative women.

Elisheva Malkiel-Rosen, MPhil alumna  
Strengthening Leadership among Women Director, Nishmat



I am now working with the Churches of Jerusalem as a part of my job with the International Community of the Holy Sepulchre. Research taught me how to listen and the Institute's mission reinforced the importance of academic research having a practical impact. I carry all of these things into my new job.

Austin Tiffany, PhD alumnus  
Executive Manager, Int. Community of the Holy Sepulchre



Perhaps it is not the politicians, the academics or the religious leaders who will invariably bring peace. From my involvement in interfaith work, I think perhaps it is the grassroots initiatives, the extraordinary, yet ordinary people who will turn out to be the Gideons of the Bible. This course gave me the grounding in interfaith dialogue, leading to effective collaboration on contemporary issues.

Naz Qureshi, Online Course alumna  
Bridging the Great Divide: the Jewish-Muslim Encounter

# Over to you:

To ensure we can continue educating, founded on ground-breaking research, leading to practical outcomes, we need your support today.

*Please donate a regular or single gift:*

Online <https://woolf.charitycheckout.co.uk/donate>

On Paper Use the enclosed form and post to  
Development Office  
Woolf Institute  
Madingley Road  
Cambridge CB3 0UB

Set up a Standing Order  
Account Name **Woolf Institute**  
Bank Name **CAF Bank Ltd.**  
Account Number **00011470**  
Sort Code **40-52-40**

Telephone **+44 (0)1223 761984**

Email [development@woolf.cam.ac.uk](mailto:development@woolf.cam.ac.uk)

By making a regular gift, you will help us continue our important work into the future.

*Thank you!*

Website [www.woolf.cam.ac.uk](http://www.woolf.cam.ac.uk)  
Facebook [WoolfInstitute](https://www.facebook.com/WoolfInstitute)  
Twitter [Woolf\\_Institute](https://twitter.com/Woolf_Institute)  
YouTube [WoolfInstitute](https://www.youtube.com/WoolfInstitute)  
Podcasts [woolfpods.wordpress.com](http://woolfpods.wordpress.com)  
Blog [www.woolf.cam.ac.uk/blog](http://www.woolf.cam.ac.uk/blog)

Charity No **1069589** Company No **3540878**

*“This course gave me the grounding in interfaith dialogue, leading to effective collaboration on contemporary issues.”*