



Show Me the DATA

State report cards must answer questions and inform action.

What is a state report card?

Information states provide on school performance at the state, district, and school





Can people easily find and understand these report cards?





The answer is NO.





States are not communicating
effectively with the public.





Finding and interpreting state
report cards is confusing and
frustrating.



After 15 years, **only 4** state report cards have all of the student performance information initially required under the federal No Child Left Behind law.

Show
Me the





45 states produce report cards in
English only.



Some states are silent on the performance of whole groups of students

Number of state report cards in which we could not find data for:



Gender



Migrant
status



Race and
ethnicity



Students with
disabilities



Low income



English
language
learners

#showmethedata

Some states **do not** provide the information that families and communities care about most.

Number of state report cards in which we could not find data for:



7

Teacher quality (And of the states that do include teacher quality information, only half provide comparisons between high- and low-income schools.)



23

An additional measure of school quality beyond test scores (like school safety or chronic absence rate)



36

Percentage of students who **enroll in two- and four-year college programs**



38

Student growth measures (learning progress from year to year)



51

Financial data transparency, including by funding source

#showmethedata



Lack of transparency breeds mistrust between families and the education system serving their children.

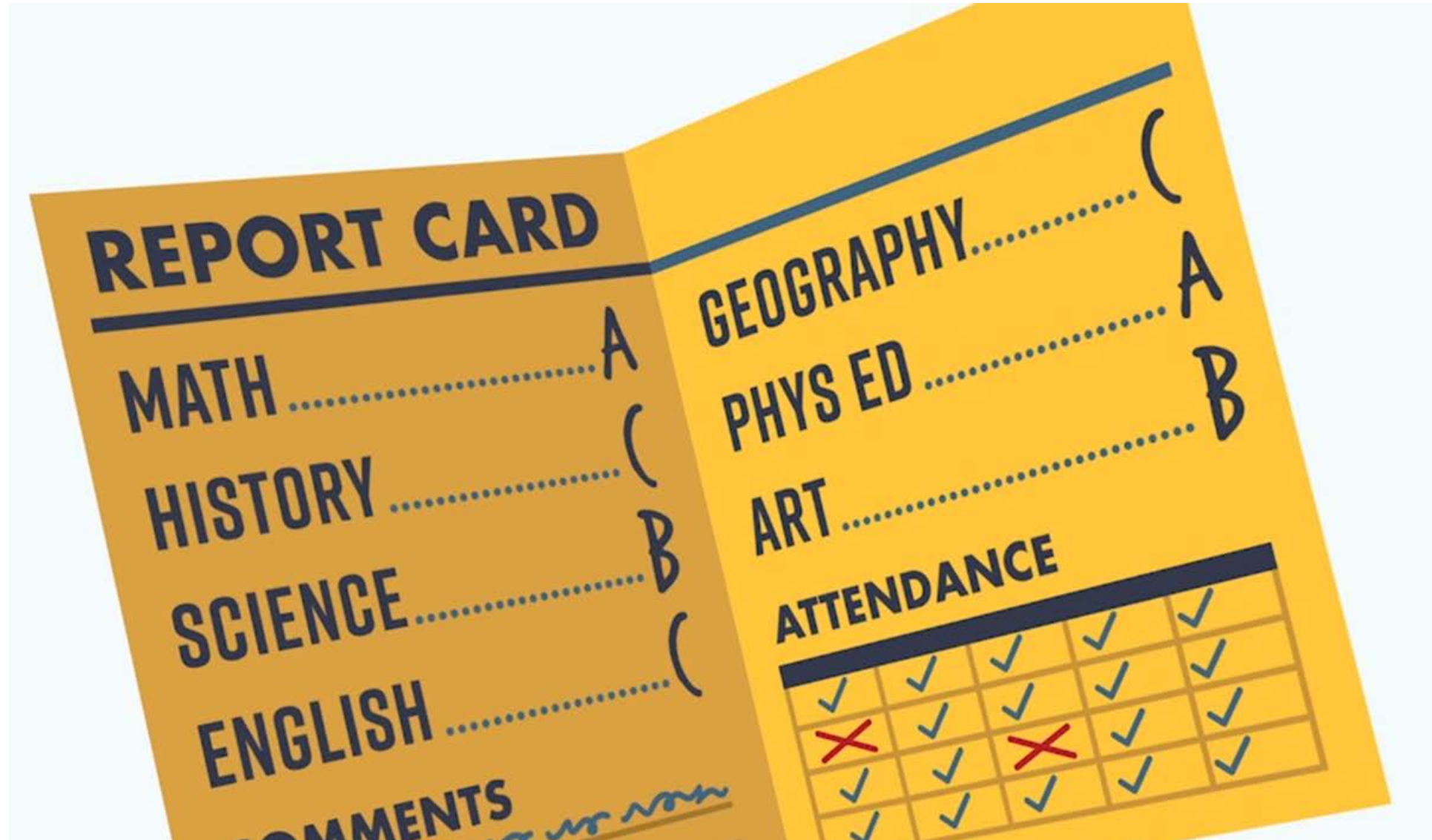


State leaders have a significant opportunity under the federal **Every Student Succeeds Act** to create report cards that actually meet communities' information needs.



All state leaders, not just the state education agency, are responsible for creating a clear picture of how schools are performing.





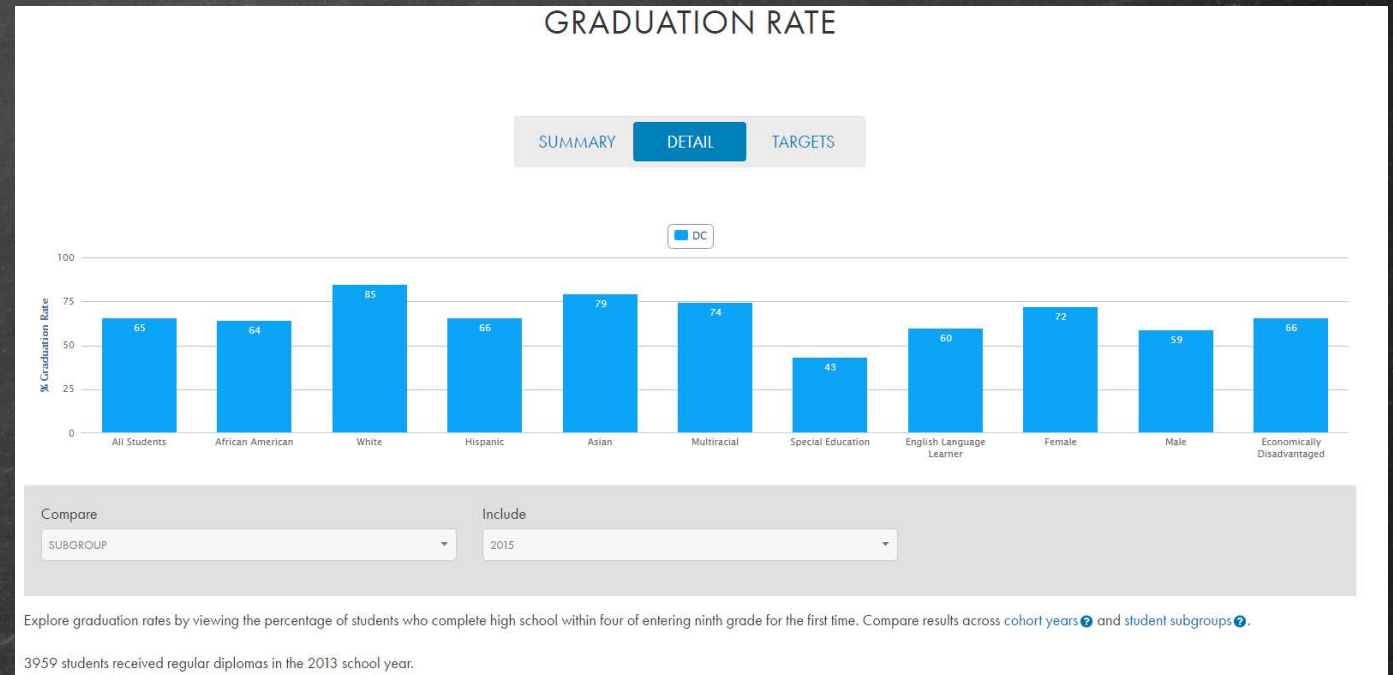
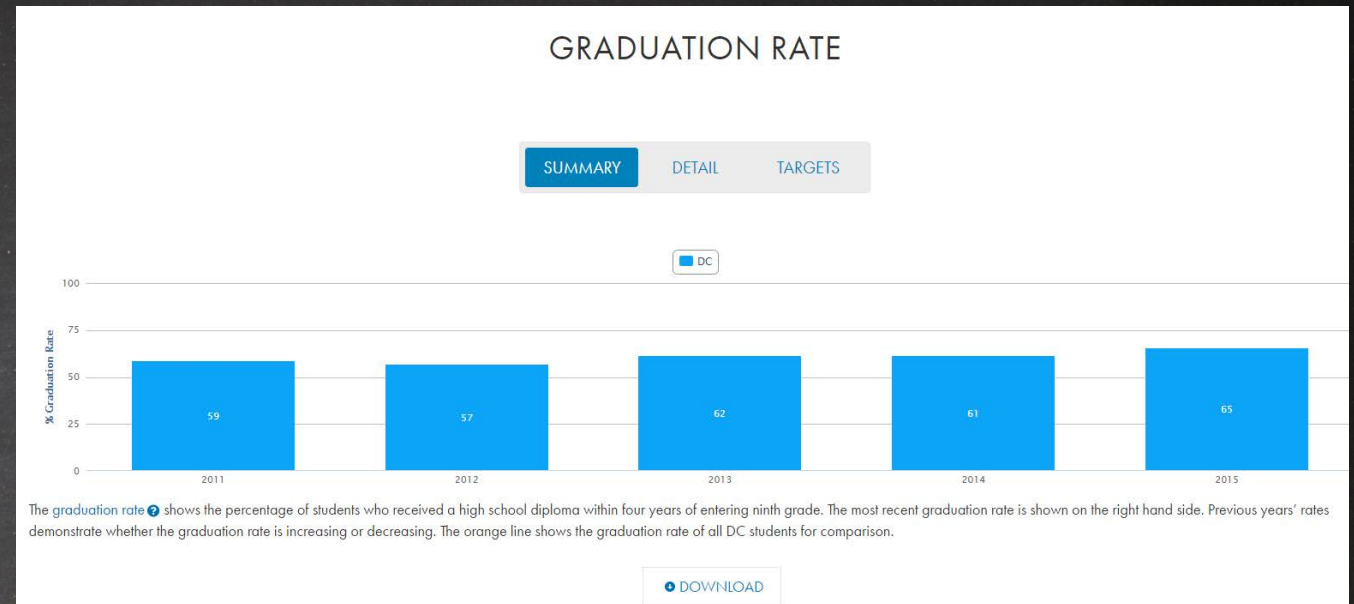
State Report Cards to Watch

Washington, DC



*Visual Appeal, Navigability,
Equity Focus*

- ✓ Graphic landing page
- ✓ Graphs include explanation of the measure and has a “details” button to dig deeper
- ✓ The site includes equity reports that cover:
 - Student movement
 - Discipline
 - Attendance
 - Graduation rate

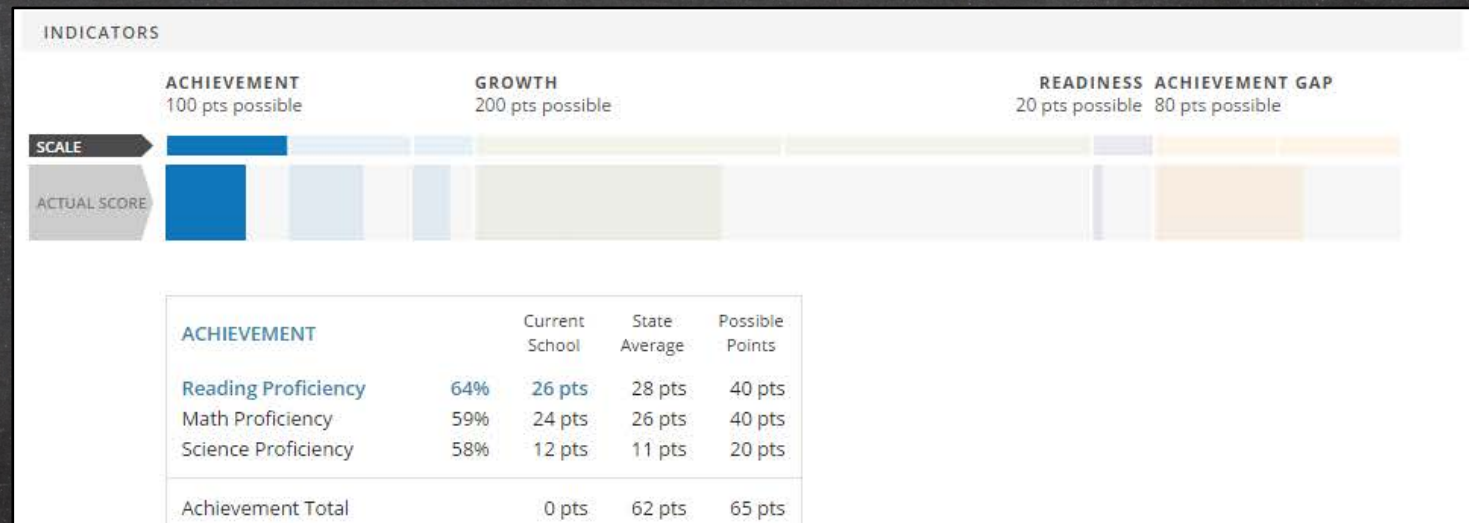
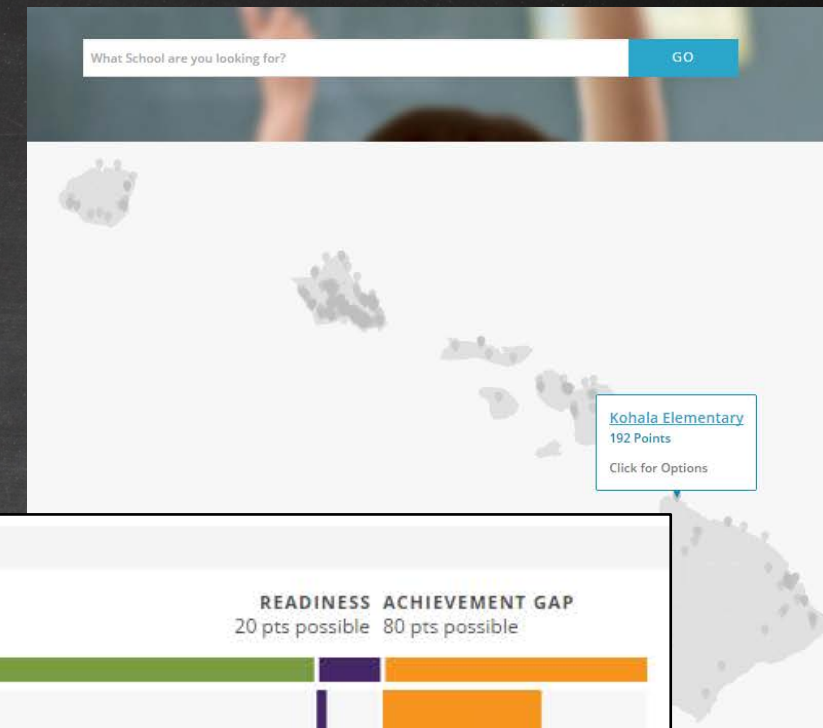


Hawaii

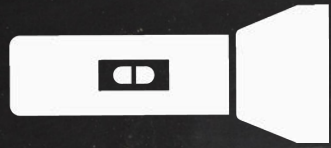


Visual Appeal and Interactivity

- ✓ Choose school from a map or search by school name
- ✓ Go directly to the school report or compare it with another school
- ✓ Hover over sections of the graph to see what components make up the index score



Illinois



*Visual Appeal
and Navigability*

- ✓ Simple landing page
- ✓ Clearly labeled tabs to access data and dig deeper
- ✓ Additional explanations, context, and resources

Fast Facts About Illinois Schools [\[View State Profile\]](#)



Explanation of Display Context Resources

[ISBE's Guide to Understanding PARCC Scores](#)

The graph displays the percentage of students who achieved scores in the following PARCC performance level categories:

- Level 1 Dark Orange - did not yet meet expectations
- Level 2 Light Orange - partially met expectations
- Level 3 Yellow - approached expectations
- Level 4 Light Green - met expectations
- Level 5 Dark Green - exceeded expectations

Students who *met* or *exceeded* expectations are likely to be on track for the next grade level and ultimately for college and career readiness.

To view this information for each individual grade, click the gray *Grade* button at the top of the display. Mouse over any block of color and the exact percentage for that level will be shown.

Click the gray *Student Groups* button to see the information for each subgroup.

Select the subject you want to view by clicking either *ELA* or *Mathematics*.

Choose *More Options* to customize the information even more. Select any subgroups or grades that you want to compare. You may need to scroll down the screen in order to view all of the displays you have chosen.

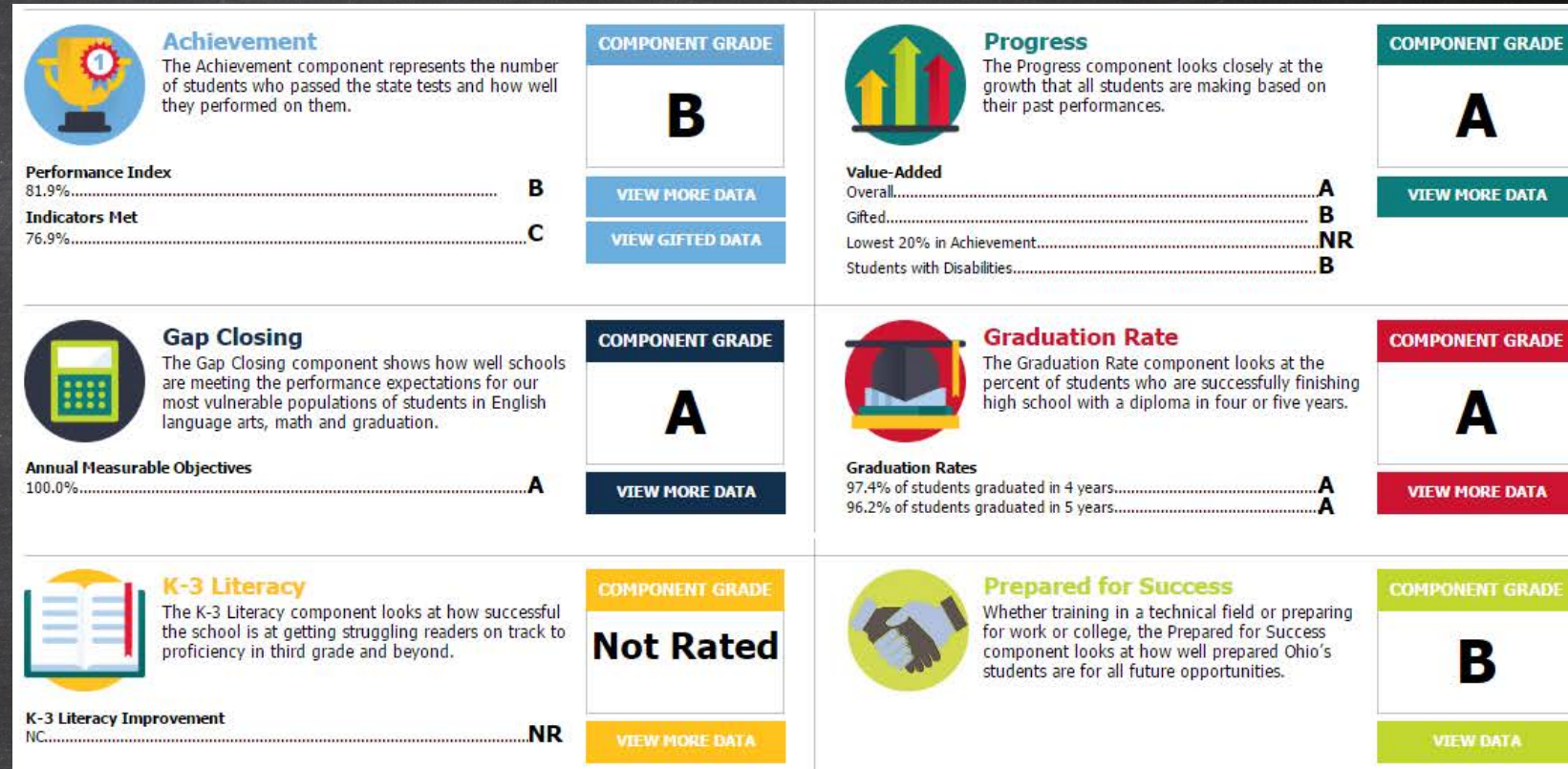
Note: If a subgroup has fewer than 10 students, no information is displayed.

Ohio



*Visual Appeal, Navigability,
Variety of Indicators*

- ✓ Easy to read overview page with clear explanations of each component
- ✓ Each component has an option to view more data
- ✓ Clearly labeled tabs across the top allow for easy navigation

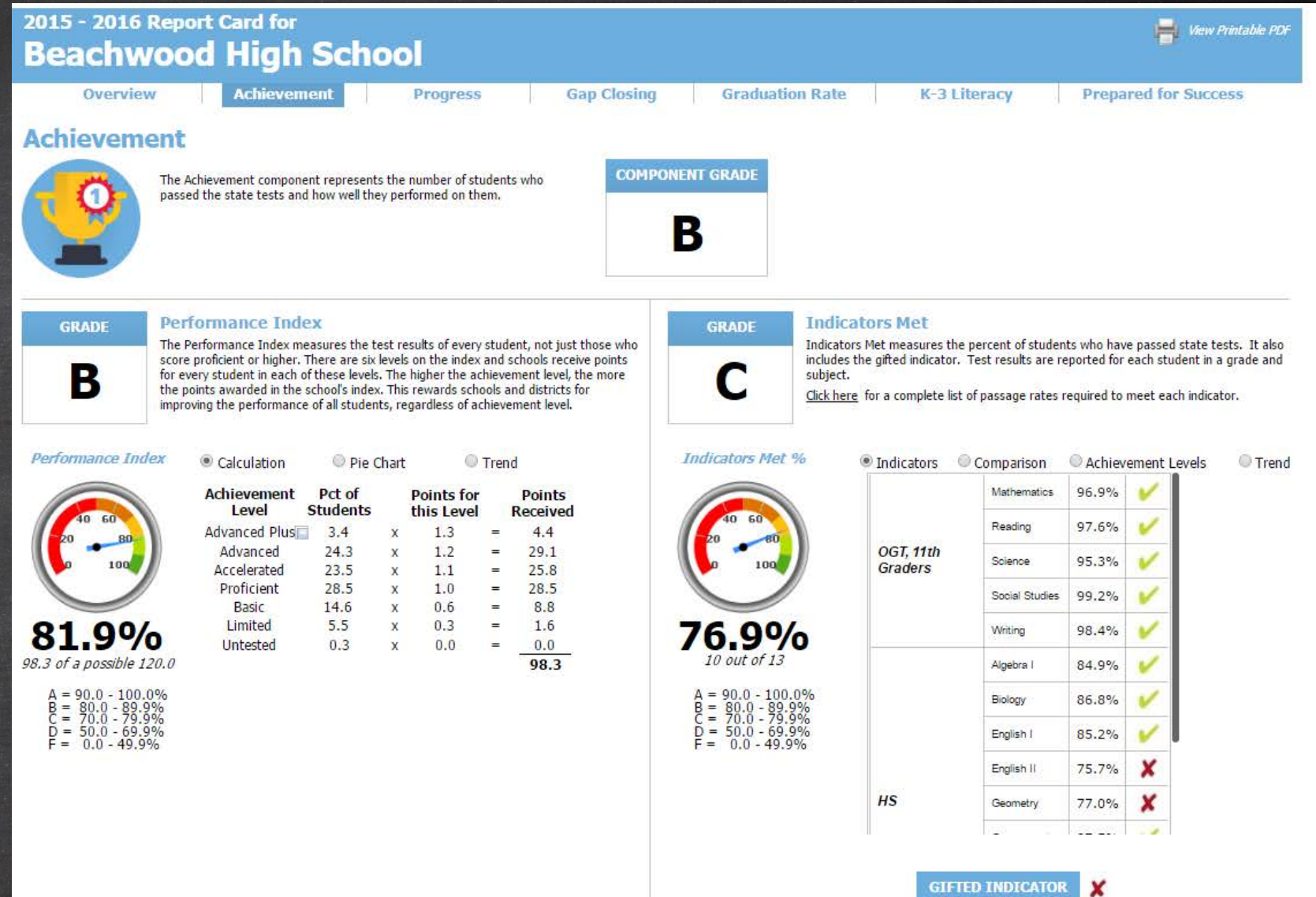


Ohio



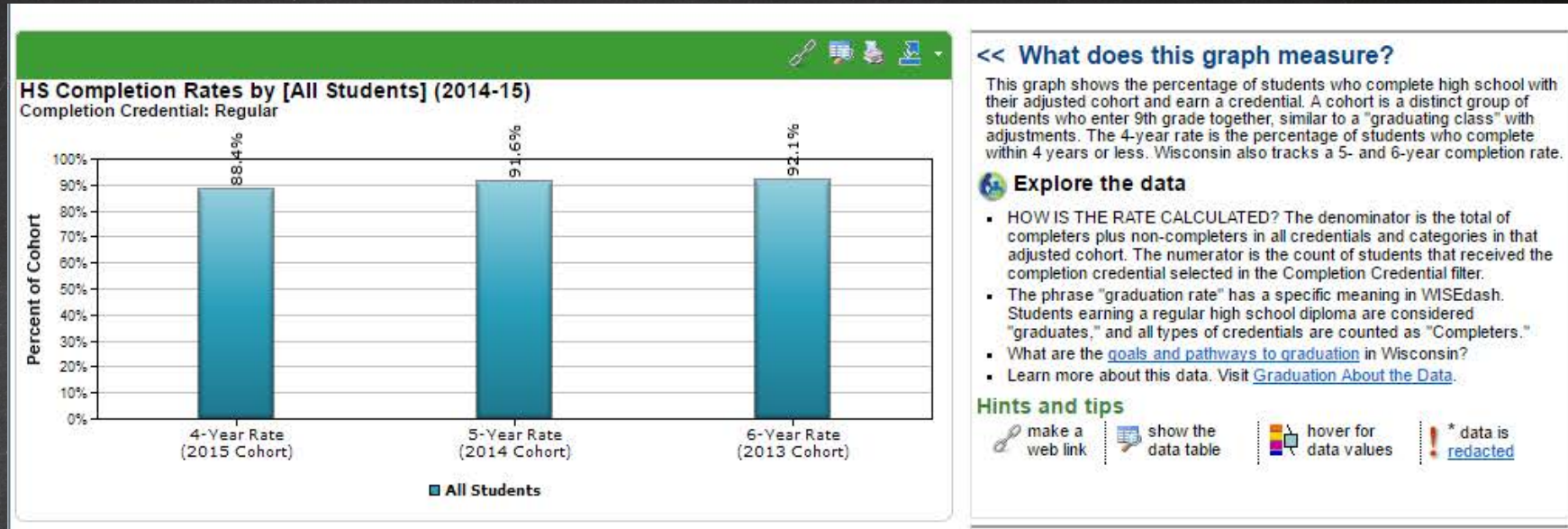
*Visual Appeal,
Navigability,
Variety of Indicators*

- ✓ Easy to read overview page with clear explanations of each component
- ✓ Each component has an option to view more data
- ✓ Clearly labeled tabs across the top allow for easy navigation





- ✓ Plain English explanations for every graph a user generates
- ✓ Hints and tips to help users get the most out of the resource
- ✓ Guidance on how to build and navigate graphs



popular searches

COMPARE

1. DISTRICTS SIDE-BY-SIDE. How can I [compare 2 school districts](#) and their schools for state assessments?
2. UP TO 5 DISTRICTS. How can I [compare high school completions among school districts](#)?
3. COMPARE ME TO STATE. I want to [quickly compare my district's academic performance](#) to the rest of Wisconsin.
4. GRADUATION RATE. What's the [state graduation rate](#) this year?

TRENDS AND CHANGE

1. ENROLLMENT. Is the number of students in my school district [growing or shrinking](#)?
2. SPENDING. [How much is spent per student](#) in public schools?
3. DISCIPLINE TRENDS. How are my district's [suspensions and expulsions](#) trending?

user help links

[start a help ticket](#)

WISEdash LINKS

- [A-Z topic list](#) in WISEdash
- [Helpdesk home](#)
- Find DPI [data by type of school](#)
- [About the data](#)
- [Download statewide data files](#)
- [Watch 3-minute HOW-TO videos](#)

DPI QUICK REFERENCE

- Directories [of people and schools](#)
- [A-Z index](#) for all WISEdash topics
- [BadgerLink](#) - Wisconsin's Online Library
- [Printed publications](#) from DPI

More on Public Reporting

- Quality Public Reporting Informs Decisions, Empowers Action
- Empowering Parents and Communities through Quality Public Reporting
- Opportunities to Make Data Work for Students in the Every Student Succeeds Act

