

ALL SHOOK UP

Inspired by and featuring the songs of ELVIS PRESLEY

Book by Joe diPietro

AUDITIONS:

Monday, May 8 from 6:00pm – 8:00pm *

(* If you are unable to attend on Monday – May 8th, but wish to participate in the show, call for an appointment for Saturday, May 6 between 10:00am-12noon)

Bring a prepared song. (*Depending on time constraints you may only be asked to sing sixteen bars.*)

Must have music on CD (*Karaoke style*) or tracks on electronic devices. A cd player and a speaker that can be connected to by Bluetooth or with an aux cord will be available. You can also use accompaniment recorded on your phone or a flash drive.

There will be a dance component to auditions. Dress to move. Please wear appropriate shoes (*No flip-flops, sandals, open-toed shoes, clogs, or boots.*)

CALLBACKS:

Tuesday, May 9 at 6pm (*Only those being considered for principal roles will be called back.*)

PERFORMANCES:

July 13-14-15, 18, 20-21-22 at 7:30 pm
July 16 – 2:00pm

AVAILABLE ROLES:

VOCAL RANGES ARE ATTACHED.

NATALIE HALLER: (Late teens - Early 20's): a mechanic.

CHAD: a great-lookin', motorcycling, guitar-playing, leather-jacketed roustabout.

JIM HALLER: (40's-50's): Natalie's widowed father.

SYLVIA (mid 40's): the no-nonsense, owner of SYLVIA'S HONKY-TONK.

LORRAINE: Sylvia's 16 year-old daughter.

DENNIS: a young, awkward, aspiring dentist.

MISS SANDRA: the beautiful, intellectual caretaker of the town's museum.

MAYOR MATILDA HYDE (40's-50's): the town's conservative mayor.

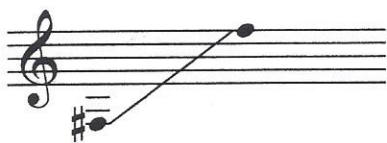
DEAN HYDE: Matilda's 16 year-old son. He has grown up at a military boarding school.

SHERIFF EARL (30's or up): the law in town. A man of not many words.

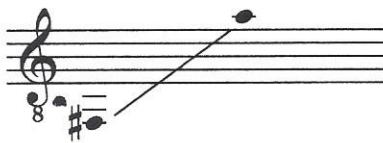
LARGE CHORUS: High school students; various townspeople

Character Ranges

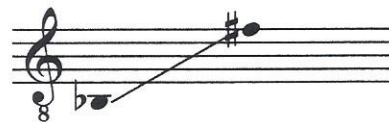
NATALIE HALLER:



CHAD:



JIM HALLER:



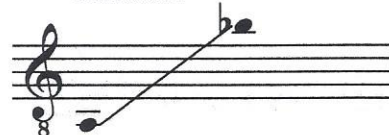
SYLVIA:



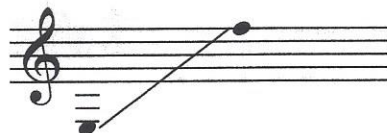
LORRAINE:



DENNIS:



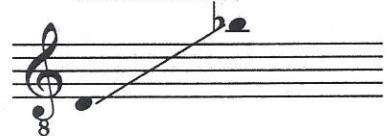
MISS SANDRA:



MAYOR MATILDA HYDE:



DEAN HYDE:



SHERRIF EARL:



HENRIETTA:



PRISONER #47:



PRISONER #3:

