

BJE CONTINUING EDUCATION (NOT PART OF THE MELTON SCHOOL)

Kol Isha: Women Wondering

and Wandering in the Wilderness Moving along in the Biblical narrative, we will reflect on the intriguing episode of Judah and Tamar, count the women who interacted with Joseph and their effect, if any, on his life. Traveling to Sinai, Miriam and Zippora appear, as well as the encounter with the Golden Calf and the Ten Commandments. This series will include a deeper look into the Daughters of Zelophad, and the laws relating to women in traditional law and the Midrash..

Monday Mornings 10:00 - 12:15 p.m., BJE Campus
September 11, 25; Oct. 9, 23; Nov. 6 / Tuition: \$125

Exploring the Tanakh (30 sessions)

This ongoing class is in its tenth year at the BJE. Master educator, Dr. Jane Shapiro, inspires students to dig deeply into the meaning of the Tanakh by way of ancient and modern commentaries. This group of students love learning together and see this class as an intrinsic part of their lives. The learning community reads the text carefully, sharing commentaries and adding midrashim for a strong literary approach both in chevrotah (partners) or as a class. Exploring the Tanakh is thirty sessions and meets weekly for 1 ½ hours from September through June. We are proud to continue to offer this outstanding, high level course to the community.

Tuesday mornings, 9:30 - 11:00 a.m., BJE Campus

Starts: September 12 / Tuition: \$600

Study In The Suburbs - Lunch & Learn with Rabbi Vernon Kurtz (3 sessions)

Each of the three study sessions in the spring will be centered on crisis in our lives. Relying on source material from Biblical and Rabbinic texts, there will be discussions on the principles and interpretation of Jewish law over the centuries and how to apply these responsa to contemporary dilemmas. This popular "lunch and learn" with Rabbi Kurtz, Rabbi at North Suburban Synagogue Beth El, held at the BJE, attracts business leaders and serious learners from the surrounding suburbs for 1 ½ hours of lively debate and learning. Twenty to thirty learners typically attend this offering.

Thursdays, Noon - 1:30 p.m., BJE Campus

Spring Dates: TBA / Tuition: \$12 per session

Jewish News Update with Carl Schrag (30 Sessions)

Carl Schrag, former Editor of the Jerusalem Post, has turned this class into one of our most-sought after learning opportunities. After successfully teaching the Rachel Wasserman Scholar Course, Beyond Borders: Insiders & Outsiders for two years to a large group of enthusiastic learners who were mostly Melton graduates, master educator Carl's in-depth course on current events has attracted many students. Because of its popularity, we offered three parts last year. This year, Jewish News Update will be a year-long 30 session course.

Wednesdays 9:30 - 11:00 a.m., BJE Campus

Starting Date: September 6 / Tuition: \$600

Jewish News Update with Carl Schrag (10 Sessions) *NEW!*

Tuesdays 7 - 8:30 p.m., BJE Campus

Starting Date: September 12 / Tuition: \$200

NON-MELTON REGISTRATION

Name _____

Address _____

City _____ Zip _____

Phone (h) _____ (c) _____

E-mail _____

Class Name _____

To pay with Mastercard or Visa:

Name on card _____

Card number _____

Exp. Date _____ Amount \$ _____

Signature _____

Make checks payable to BJE.

Mail completed form/payment to **BJE Campus for Jewish Learning**
3320 Dundee Road, Northbrook, IL 60062.

Contact Rolly Cohen for more information at 847-291-7788 x1304
or rolly@bjechicago.org.

CONSORTIUM MEMBERS

A consortium of member agencies enhances the Melton School program in Metropolitan Chicago. Current members of these agencies may participate in classes at a reduced fee.

Anshe Emet Synagogue

Congregation Beth Judea

Congregation Beth Shalom

Congregation B'nai Tikvah

Congregation Etz Chaim

Moriah Congregation

North Shore Congregation Israel

North Suburban Synagogue Beth El

Oak Park Temple

Solomon Schechter Day School

West Suburban Temple Har Zion

TRY A FREE TASTE OF MELTON

See for yourself what high-quality,
meaningful adult Jewish learning is all about.
Join us for a FREE hour of learning

Taste of Melton

• **Sunday, August 6 at 1:00 pm**

• **BJE Campus, 3320 Dundee Road, Northbrook**

• **Thursday, August 10 at 7:00 pm**

**West Suburban Temple Har Zion, 1040 N. Harlem Ave,
River Forest**

For questions and to RSVP contact Rolly Cohen at
847-291-7788 x 1304 or rolly@bjechicago.org

MELTON REFUND POLICY

Full tuition refunds, less a \$25 processing fee,
will be given after first class. No refunds after
completion of the first week of class.

No refunds on course books.

Online Registration: bjechicago.org

The BJE Melton School of Greater Chicago 2017-2018 5778

Sponsored by the
**Board of Jewish Education
of Metropolitan Chicago**

in collaboration with

Chicago Board of Rabbis

Florence Melton Corporation

Charles & M.R. Shapiro Foundation, Inc.

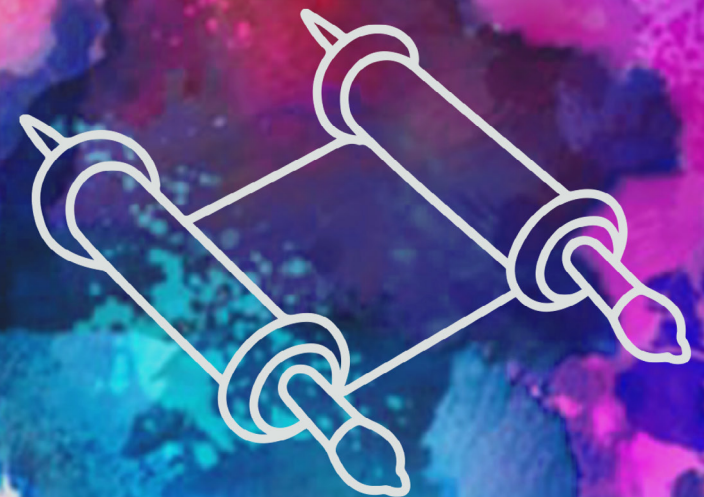
Marcia Fischer Webb Adult Education Fund



**THE BJE MELTON SCHOOL
OF GREATER CHICAGO**

2017-18 5778

bjechicago.org



**Come
TEXT
with us!**

Online registration: bjechicago.org

**For more information, contact Rolly
Cohen at 847-291-7788 x1304
rolly@bjechicago.org**

WHAT IS THE FLORENCE MELTON SCHOOL OF ADULT JEWISH LEARNING?

A two-year educational program designed to offer adults well-rounded, in-depth study of Judaism in a user-friendly environment.

In a format developed at the Hebrew University of Jerusalem, adult learners from diverse backgrounds learn about our heritage and culture in an intellectually stimulating, non-denominational environment.

Students explore classic Jewish sources, from Biblical through contemporary texts, and investigate issues of Jewish thought, practice, ethics and Jewish history.

INCLUDED IN THE TEXT-CENTERED CORE CURRICULUM

Year 1 (25 sessions)

Rhythms of Jewish Living examines the Jewish calendar, holidays, and life-cycle events. Students explore ideas, beliefs and practices that define Jewish life.

Purposes of Jewish Living explores Jewish thought and beliefs. Essential Jewish theological concepts are presented through in-depth examination of the Bible, Talmud and other sacred texts.

Year 2 (25 sessions)

Ethics of Jewish Living addresses the relationship between Jewish life and ethical behavior. The focus is on how Jewish tradition shapes our relationship with other human beings.

Crossroads of Jewish History spotlights defining periods in Jewish history and provides an understanding of how these crossroads have shaped Judaism as we know it today.

OTHER COURSES IN THE CURRICULUM

Foundations of Jewish Family Living (10 sessions)

Provides a thought-provoking encounter with the core values of Judaism. This rich learning experience will provide an opportunity for adult students to bring the conversation home to share with their children and families.

The Rachel Wasserman Scholars Curriculum (10 sessions)

Takes students on a journey of deep examination of Jewish texts. The Scholars Curriculum presents classic and modern texts that have shaped Jewish perspectives for thousands of years and invites students to lend their voices to the ageless pursuit of Jewish wisdom..

Jewish Professionals Cohort (25 sessions)

Specialized Core Year I & Year 2 curriculum designed specifically for educators and professional staff at Jewish religious and communal organizations.

Modern Living: Maintaining Balance (4 sessions)

Offers ways to find balance in our lives by discovering answers in timeless Jewish texts. The course focuses on family, work, community and self.

We Are What We Remember: The Ever-Evolving Transmission of Jewish History

This 4-session Melton course explores the impact of collective memory. Participants will encounter in a number of different ways one of the most powerful keys to Jewish survival: the enduring determination to never forget.

- Remember the attempted Jewish national genocide by Amalek
- Reflections on the Spanish expulsion
- Recollections of Poland just before and after the Shoah
- State of Israel as envisioned by its founders and as experienced today by its citizens

MELTON SITES 2017-2018

Classes start in September and October.
See online registration for actual starting dates.

Northwest Suburbs

Congregation Beth Judea, 5304 RFD, Long Grove

Core Year 2 - Wednesdays 7-9:15 p.m. (Sponsored by Men's Club)

Northern Suburbs

BJE Campus 3320 Dundee Road, Northbrook

Rachel Wasserman Scholars Curriculum:

Shemot I (Fall) - Mondays 7-8:30 p.m.

Shemot II (Spring) - Mondays 7-8:30 p.m.

The Star and the Crescent (Fall)** - Wednesday 7-9:15 p.m.

Core Year 1 - Tuesdays 7-9:15 p.m. (Sponsored by Beth Shalom)

Congregation B'nai Tikvah 1558 Wilmet Road, Deerfield

Core Year 1 - Thursdays 7-9:15 p.m.

Rachel Wasserman Scholars Curriculum:

Beyond Borders (Fall)** - Tuesdays 7-8:30 p.m.

Congregation Beth Shalom 3433 Walters Ave, Northbrook

Foundations for Jewish Living (Fall) - Thursdays 7:30-8:45 p.m.

Moriah Congregation 200 Taub Drive, Deerfield

Core Year 2 - Wednesdays 9:15-11:30 a.m.

Rachel Wasserman Scholars Curriculum:

Beyond Borders (Fall) - Thursdays 9:30-11:00 a.m.

North Shore Congregation Israel 1185 Sheridan Road, Glencoe

Foundations for Jewish Living (NSCI)

Sundays, 9-10:00 a.m.

We Are What We Remember (NSCI)

TBA.

North Suburban Synagogue Beth El 1175 Sheridan, Highland Pk

Core Year 2 - Ethics (Only)** - Sundays 9:15-10:30 a.m.

Rachel Wasserman Scholars Curriculum:

Bemidbar (Fall)** - Tuesdays 8-9:15 p.m.

Solomon Schechter Day School 3210 Dundee Road, Northbrook

Jewish Professional Cohort - Core - Thursdays 4-5:00 p.m.

Foundations for Jewish Living - Tuesday 8-9:00 a.m.

Western Suburbs

Congregation Etz Chaim 1710 South Highland Ave., Lombard

Core Year 1 - Sundays 12:30-2:45 p.m.

Rachel Wasserman Scholars Curriculum:

Beyond Borders: The Arab Israeli Conflict - Part 1 (Fall)

Mondays 10-11:30 a.m.

Oak Park Temple 1235 North Harlem Ave., Oak Park

Rachel Wasserman Scholars Curriculum:

Jewish Humor: From Sinai to Seinfeld (Fall) - Tuesdays 7-8:30 p.m.

We Are What We Remember (Fall)** - Thursdays, 10-11:00 a.m.

The Star and the Crescent (Spring)** - Thursdays 10-11:30 a.m.

West Suburban Temple Har Zion 1040 N. Harlem Ave., River Forest

Core Year 1 - Thursdays 7-9:15 p.m.

Chicago

Anshe Emet Synagogue 3751 N. Broadway, Chicago

Rachel Wasserman Scholars Curriculum:

The Star and the Crescent (Spring)** - Thursdays 7-8:30 p.m.

We Are What We Remember (Fall)** - Saturday 9-10:00 p.m.

JUF / Federation - Loop Location

Jewish Professional Cohort - Core Year 2

Ethics (Only) - Tuesdays Noon-1 p.m.

Join us in October 2018 for an exciting Israel Melton Seminar, **Within Borders**, led by Haim Aronovitz, Director of Travel Seminars. (Space is Limited)

For more information, contact Rolly Cohen
847-291-7788 x 1304 or rolly@bjechicago.org



TUITION

Course	Tuition Consortium Member (See list)	Tuition Non-Consortium Member	Book Fee
Core Curriculum (Year 1 or 2)	\$525*	\$625*	\$70
Foundations	\$105	\$115	\$45
Rachel Wassermann Scholars	\$210	\$310	\$45
Professional Cohort	\$200	N/A	\$40
Maintaining Balance	\$110	\$125	\$10
We Are What We Remember	\$110	\$125	\$10

***\$25 Early bird discount for Core registration paid in full by August 31st**

-\$50 Couples discount for Core registration

**** Register through Rolly Cohen**

847-291-7788 x 1304 or rolly@bjechicago.org

MELTON REGISTRATION bjechicago.org

Please circle your class preference

Northwest Suburbs

- Congregation Beth Judea – Core Year 2

Northern Suburbs

- BJE Campus – Shemot I (Fall)
- BJE Campus – Shemot II (Spring)
- BJE Campus – The Star and Crescent (Fall)
- BJE Campus – Core 1 (Sponsored by Congregation Beth Shalom)
- Congregation Bnai Tikvah – Core 1
- Congregation Bnai Tikvah – Beyond Borders (Fall)
- Congregation Beth Shalom – Foundations of Jewish Living (Fall)
- Moriah Congregation – Core 2
- Moriah Congregation – Beyond Borders (Fall)
- NSCI – Foundations of Jewish Living
- NSCI – We Are What We Remember
- North Suburban Synagogue Beth El – Core 2 (Ethics)
- North Suburban Synagogue Beth El – BeMidbar (Fall)
- Solomon Schechter Day School – Professional Cohort Core 1
- Solomon Schechter Day School – Foundations for Jewish Living (Fall)

Western Suburbs

- Congregation Etz Chaim – Core 1
- Congregation Etz Chaim – Beyond Borders (Fall)
- Oak Park Temple – Jewish Humor (Fall)
- Oak Park Temple – We Are What We Remember (Fall)
- Oak Park Temple – The Star and the Crescent (Spring)
- West Suburban Temple Har Zion – Core 1

Chicago

- Anshe Emet Synagogue – The Star and the Crescent (Spring)
- Anshe Emet Synagogue – We Are What We Remember (Fall)
- JUF - Loop location – Core Year 2 (Ethics)

Name _____

Address _____

City _____ Zip _____

Phone (h) _____ (c) _____

E-mail _____

Current Synagogue Affiliation _____

Contact Rolly Cohen at 847-291-7788 x1304 about scholarships available through the **Marcia Fischer Webb Adult Education Fund**.

To pay with • Mastercard • Visa

Name on card _____

Card number _____

Tuition and Book Fee \$ _____ Donation \$ _____

Exp. Date _____ Total \$ _____

Signature _____

Make checks payable to BJE.

Mail completed form/payment to:

**BJE Campus for Jewish Learning,
3320 Dundee Road, Northbrook, IL 60062**