

IN THIS ISSUE:

- ❖ How to Handle Dollars
- ❖ Volunteer Recruitment and Retention
- ❖ Other Video Learning
- ❖ Have Someone Looking for a Summer Internship?
- ❖ Outside Funding Opportunities
- ❖ Up for a Community Visit?
- ❖ Events Calendar
- ❖ Facebook News
- ❖ Annual Review
- ❖ From the League of Kansas Municipalities...
- ❖ Currently Enrolled Communities

How to Handle Dollars



New to the program and needing pointers on where to start when it comes to taking on funds?

Transitioning and looking for options on how to receive funds?

Join Jaime Menon (of K-State Research and Extension PRIDE) and David Key (Director of

Meadowlark Extension District) to learn more about what options there are to consider.

- **Tuesday, September 25 at 10:30am to 11:30am** – How to Handle Dollars – Joined by David Key, Meadowlark Extension District Director

More webinars to follow throughout the fall and winter:

- **Tuesday, October 30 at 10:30am to 11:30am** – Applying for Kansas PRIDE Grants – Joining will be Nancy Daniels, K-State Research and Extension Community Vitality
- **Tuesday, November 20 at 10:30am to 11:30am** – Getting Organized with Board Roles and Responsibilities – Bruce Chladny, Wyandotte County Extension
- **Tuesday, December 18 at 10:30am to 11:30am** – How to Tell Your Story – Barbara Anderson, Regional Project Manager with the Kansas Department of Commerce

All lessons will be facilitated by Jaime and/or Jan, with special guests to join us for sharing their expertise in the Q and A concerning the topics covered.

Register by emailing us at PRIDE@ksu.edu. Some of the sessions will have handouts that go along with the lesson. If you take advantage of the recorded version and want the handouts just give

us a shout at PRIDE@ksu.edu and we will get them to you!

Look forward to learning with you! – *Jaime Menon, Kansas PRIDE Co-Coordinator, K-State Research and Extension* jmenon@ksu.edu



Volunteer Recruitment and Retention



Thank you to all that participated in our webinar on Volunteer Recruitment and Retention. We had some great questions that will be helpful to others!

Speaking of, if you were unable to make the webinar it does not leave you out of the learning! We have the opportunity posted to our Education Page (thanks Jan!) with other refreshed videos on:

- Intro to PRIDE
- Engaging Your Community

- Awards
- Enrollment
- Reporting

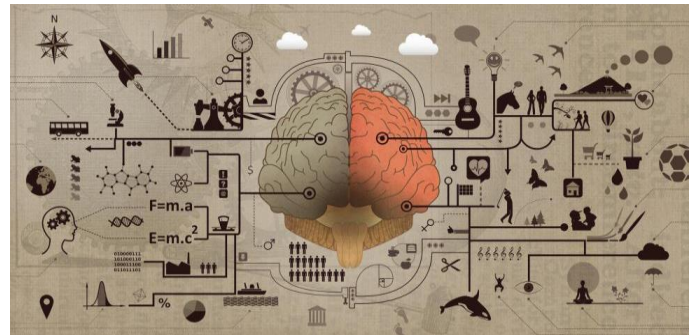
If you view the video and want the handouts and tip sheets, don't hesitate to contact us at PRIDE@ksu.edu and we will get you sorted!

Follow the link for some learnin'!

<http://kansasprideprogram.k-state.edu/education/index.html>

Thank you for all that you do, and don't forget, Jan and I are always here to help! – *Jaime Menon, Kansas PRIDE Co-Coordinator, K-State Research and Extension* jmenon@ksu.edu

Other Video Learning



The K-State Research and Extension Community Vitality site has a new tab: Educational Webinars

On the site are:

- Looking Beyond Hansen for Funding
- Crowdfunding and Capital Campaigns

<https://www.ksre.k-state.edu/community/civic-engagement/webinars/index.html>

Interested? Enjoy! – *Jaime Menon, Kansas PRIDE Co-Coordinator, K-State Research and Extension*
jmenon@ksu.edu

Have Someone Looking for a Summer Internship?



The Dane G. Hansen Foundation, in cooperation with K-State Research and Extension, is offering NW Kansas communities an opportunity to host a summer intern(s).

The Dane G. Hansen Foundation community internship initiative matches Northwest Kansas communities or organizations that have a specific need with upper-level college students to address that need during a summer internship.

Communities or organizations first identify a community improvement project such as downtown revitalization planning; community website, calendar or marketing; park or trail improvement; design for re-purposing an old building; or a host of other possibilities, and then apply to host an intern to assist with the project.

Job descriptions for summer internship positions are developed once projects are identified, and students apply for the various positions.

Students are able to get the hands-on experience needed when looking for a job and communities benefit from their knowledge. It's a win for both.

Questions? Contact Nadine Sigle at nsigle@ksu.edu or at 785.346.6256

Up for a Community Visit?

Would your PRIDE organization like to be brought up to speed on available opportunities? Have you had a leadership change and would like to make sure you're on the right track? Let us know and we'll work on scheduling a time to meet with you. Send us an email at PRIDE@ksu.edu. – *Jan Steen, Kansas PRIDE Co-Coordinator, K-State Research and Extension* jmsteen@ksu.edu

Events Calendar

Quarterly Report Dates:

April 15th

July 15th

October 15th

January 15th



Opportunity Dates:

October 15, 2018 – Community of Excellence Applications Due

February 15, 2019 – Award Applications Due

Facebook News



Don't forget to like us on Facebook if you haven't already. We post there often, and some of that information isn't available in the newsletter – webinar announcements, community news, alerts. Examples of recent posts to the Facebook Pages we "Like":

- Perry Fall Festival – September 8

- Humboldt Biblesta Parade – October 6

Head over to <http://www.facebook.com/KansasPRIDE/> for to check us out, or “Like” us to see opportunities that are upcoming! Also invite us to “Like” your page if you have one! – *Jan Steen, Kansas PRIDE Co-Coordinator, K-State Research and Extension* jmsteen@ksu.edu

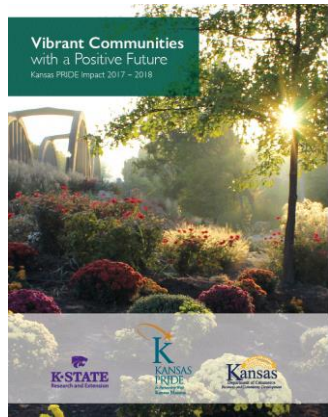
<http://kansasprideprogram.k-state.edu/news/annual-review.html>. – *Jan Steen, Kansas PRIDE Co-Coordinator, K-State Research and Extension* jmsteen@ksu.edu

From the League of Kansas Municipalities...

The League of Kansas Municipalities has a new job opening for an Administrative Assistant in Topeka. For more information on the opening, visit: https://www.lkm.org/networking/apply_now.aspx?view=2&id=511318

Annual Review

The 2017-2018 Kansas PRIDE Impact Report for 2017-2018 is now online and sporting Humboldt’s winning photo on the cover. Click on the report image to view the full report online, or you can access it via the following link:



Communities Currently Enrolled in the Kansas PRIDE Program



These communities have enrolled in the Kansas PRIDE Program this year. If you’re meeting as a local PRIDE group and don’t see your community name here, it’s not too late to enroll! Go to: <http://kansasprideprogram.k-state.edu/enrollment-reporting/index.html>

Click on the blue “Enroll” button to continue.

| | | | |
|----------------|--------------|--------------|------------|
| Admire | Dover | Larned | Olsburg |
| Agra | Elk City | Lecompton | Ozawkie |
| Alden | Ellis | Lenora | Park City |
| Almena | Fort Scott | Leonardville | Perry |
| Alton | Glasco | LeRoy | Potwin |
| Arlington | Grainfield | Lincoln | Randolph |
| Ashland | Grinnell | Linn Valley | Riley |
| Basehor | Haysville | Lucas | Rossville |
| Baxter Springs | Herndon | Luray | Rozel |
| Belleville | Highland | Macksville | Russell |
| Burlingame | Hoyt | Marion | Savonburg |
| Bushton | Humboldt | McFarland | Solomon |
| Centralia | Independence | Melvern | Stockton |
| Clifton | Iola | Moran | Tampa |
| Columbus | Kinsley | Mount Hope | Vermillion |
| Council Grove | La Harpe | Natoma | Wakefield |
| Delia | Lakin | Norton | Wilson |