



Sabreline 47 Motor Yacht – SELKIE

Make:	Sabreline	Boat Name:	SELKIE
Model:	47 Motor Yacht	Hull Material:	Fiberglass
Length:	47 ft	Draft:	4 ft 5 in
Price:	\$ 380,000	Number of Engines:	2
Year:	2003	Fuel Type:	Diesel
Condition:	Used		

Essex Yacht Sales - Leslie Quarrier
Brewer Dauntless Shipyard, 37 Pratt St, Essex, CT 06426, United States
Toll-free: 866-771-6930 Tel: (860) 767-3013 Fax: (860) 760-6797 leslie@essexyachtsales.com
<http://www.essexyachtsales.com>

The "SELKIE"

Consider beautiful SELKIE!

An exceptional 2003 Sabreline 47 Motoryacht, SELKIE features low hour 500 hp Yanmar diesels, Airconditioning throughout, bow thruster, watermaker (currently decommissioned), updated electronics, distinctive light gray Imron hull, warm and inviting custom mahogany interior, full beam master stateroom, Queen berth and over \$200,000 in custom upgrades.

Ready for her next owner to enjoy.

Clearly, SELKIE is a "Must See"!

Measurements

Cruising Speed:	20 kn	Displacement:	42500 lb
Max Speed:	23 kn	Fuel Tanks Capacity:	695 gal
LOA:	47 ft 6 in	Fuel Tanks Material:	Aluminum
Beam:	15 ft	Fresh Water Tanks Capacity:	200 gal
Max Draft:	4 ft 5 in	Fresh Water Tanks Material:	Plastic
		Holding Tank Capacity:	80 gal

Propulsion

Engine #1

Engine Make:	Yanmar	Hours:	1749
Engine Model:	6CX-GTE2	Power:	500 hp
Primary Engines:	Inboard	Propeller Type:	5 Blade
Drive Type:	Direct Drive	Propeller Material:	Bronze
Location:	Port	Rope Cutter:	Yes

Engine #2

Engine Make:	Yanmar	Hours:	1744
Engine Model:	6CX-GTE2	Power:	500 hp
Primary Engines:	Inboard	Propeller Type:	5 Blade

Essex Yacht Sales - Leslie Quarrier
Brewer Dauntless Shipyard, 37 Pratt St, Essex CT
Toll-free: 866-771-6930 Tel: (860) 767-3013 Fax: (860) 760-6797 leslie@essexyachtsales.com
<http://www.essexyachtsales.com>

Drive Type: Direct Drive Propeller Material: Bronze

Location: Starboard Rope Cutter: Yes

ACCOMMODATIONS

Sleeps a total of four. GUEST STATEROOM is forward, with spacious V-Berth, generous drawer and locker storage, two hanging lockers, two opening portlights and an overhead opening hatch.

The ensuite HEAD offers vanity with sink, VacuFlush head with separate holding tank, separate shower stall, two opening portlights and an opening hatch overhead. The floor is ceramic tile.

The fully functioning GALLEY is U-shaped, next aft to port, with two opening portlights and an opening hatch overhead.

Up three steps to the SALON which features the lower helm to starboard, helm seat, sliding doors both port and starboard to the wide side decks, desk/chart table with stool to port, custom newly upholstered larger U-shaped settee (Admiral Blue Ultraleather 10/2017) with comfortable cushions, custom high gloss varnished inlaid table (with one leaf) to starboard. Opposite, to port is a storage unit housing the Samsung 40" LCD TV (which can raise & lower), Sirius entertainment, Bose 123 DVD and Audio System, plus additional storage. The custom Herreschoff interior features mahogany cabinetry and trim, bright laminate, varnished teak and holly cabin sole - all beautifully finished throughout.

Steps lead up from the salon, portside aft, through an opening door directly onto the deck.

Aft and down three steps to the full-beam MASTER STATEROOM with walk-around Queen berth, built-in desk, seating, full-height hanging locker, generous drawer and locker storage everywhere, seven opening portlights and opening door with hatch to the aft deck.

The ensuite HEAD with ceramic tile floor, comes equipped with vanity with sink, mirror, VacuFlush head with separate holding tank, separate stall shower with seat, two opening portlights with overhead opening hatch.

The custom Herreschoff interior is bright and warm. Everywhere is varnished mahogany cabinetry, trim, bright laminate, varnished teak and holly cabin sole - beautifully finished throughout.

GALLEY

- Custom Down Galley to Port

Essex Yacht Sales - Leslie Quarrier
Brewer Dauntless Shipyard, 37 Pratt St, Essex CT
Toll-free: 866-771-6930 Tel: (860) 767-3013 Fax: (860) 760-6797 leslie@essexyachtsales.com
<http://www.essexyachtsales.com>

- Force 10 3-Burner Propane Cooktop
- Sub Zero Side by Side Refrigerator and Freezer (Icemaker in Freezer)
- Cuisinart Convection Oven (2017)
- Double Stainless Steel Sinks
- Custom Glass Cabinet For Stemware
- (2) Opening Portlights
- Opening Overhead Hatch
- Great Natural Light From the Windshields Directly Above The Galley
- Clean, Neat & Very Functional Layout
- Abundant storage & Counter Space

ELECTRONICS

- Raymarine 4kW HD Radar (8/2013)
- Raymarine E127 GPS/Chartplotter/Radar (8/2013) Hybrid Touchscreen
- Raymarine E125 GPS/Chartplotter/Radar (8/2013) Hybrid Touchscreen
- XM Weather (8/2013)
- Raymarine Autopilot
- Raymarine VHF
- ICOM 504A VHF (8/2013)
- (2) Ritchie Compasses
- Tracvision Dome (2015)
- EPIRB (2013)
- Sirius Radio/Antenna
- Samsung 40" LCD TV (in Entertainment Center Pop-up Unit to Raise & Lower)
- Sharp 15" LCD TV

ELECTRICAL

- Onan MDKAW 11.5 kW Generator in Sound Shield (3183hrs)
- AGM Generator Battery (2016)) & Parallel Switch To Engine Batteries
- (4) AGM 8D Batteries (2012)
- (3) Group 31 Starting Batteries

Essex Yacht Sales - Leslie Quarrier
 Brewer Dauntless Shipyard, 37 Pratt St, Essex CT
 Toll-free: 866-771-6930 Tel: (860) 767-3013 Fax: (860) 760-6797 leslie@essexyachtsales.com
<http://www.essexyachtsales.com>

- Xantrex 3000 Watt Inverter w/Remote Control (2017)
- Xantrex System Panel (SCP)
- Battery Temperature Monitoring
- 150 AH Balmar Alternator For House Battery Charging w/Multistage Charging & Battery Temperature Monitoring
- Battery Parallel Switch w/House & Generator Battery Banks
- Glendinning Cablemaster w/75' of 50A Cable

MECHANICAL & PLUMBING

- Upgraded Yanmar 500hp 6CX-GTE2 Engines (1749, 1744 hrs 10/2017))
- FloScan Fuel Monitor
- Dual Racor Fuel Filters/Water Separators - Each Engine
- Fuel Polisher System
- Seacocks w/Plugs
- Sidepower SP125T Bow Thruster w/2 Joystick Controls
- Sea Recovery Ultra Whisper Watermaker (600gpd) (Never Used by These Owners)
- Marine Air Reverse Cycle Air Conditioning (48,000BTU)
- (2) Air Handlers Main Salon
- (1) Air Handler Master Stateroom
- (1) Air Handler Guest Stateroom
- (2) VacuFlush Heads
- (2) 40 Gallon Holding Tanks
- (2) Sealand Macerators
- 200 Gallons Fresh Water
- Engine Exchange /120V AC Raritan Hot Water Heater

HULL & DECK

- Light Gray Imron Paint Hull (2010)
- White Superstructure
- Light Gray Non-Skid Decks
- Bottom Stripped, Barrier Coated (2011)

Essex Yacht Sales - Leslie Quarrier
 Brewer Dauntless Shipyard, 37 Pratt St, Essex CT
 Toll-free: 866-771-6930 Tel: (860) 767-3013 Fax: (860) 760-6797 leslie@essexyachtsales.com
<http://www.essexyachtsales.com>

- Never Blistered or Damaged
- Exterior Teak Stripped, Redone (2017)
- Bimini Top & Strataglass Enclosure (2013)
- Slate Blue Ultraleather FB Cushions (2015)
- Flybridge Table (2015)
- Muir VRC 2200 Anchor Windlass w/Controls @ Foredeck, FB & Helm
- CQR 65# Plow Anchor on S/S Bow Roller
- 250' 3/8" Hi Tensile Galvanized Chain
- RSMD Anchor Auto Anchor
- Line Cutters
- Custom Mast & Boom For Dinghy Lifting
- Lewmar Electric 44CST Winch & Rigging For Dinghy Lift & Launch
- Fresh and Salt Water Washdowns on Bow
- Frigibar Refrigerator - Flybridge - (Can Function as Refrigerator or Freezer)
- Fiberglass Swim Platform
- Swim Ladder
- Fireboy Fire Extinguishing System
- Magma Propane Barbecue (2015)
- (13) Docklines
- (4) Fenders, (2) Large Ball Fenders
- (9) Adult Life Jackets, (2) Child Life Jackets
- Throw Ring
- Flares
- Horn
- (4) Fire Extinguishers
- Flagstaff & Ensign

BROKER'S COMMENTS

SELKIE is an exceptional late model Sabreline 47 with over \$200,000 in custom upgrades completed when built. These, her third owners, clearly have continued that pride of ownership and legacy of excellence. SELKIE is a "showpiece" and is one of the last 47s built. Her light gray Imron painted hull is striking and the exterior brightwork perfectly sets off her classic lines.

Essex Yacht Sales - Leslie Quarrier
 Brewer Dauntless Shipyard, 37 Pratt St, Essex CT
 Toll-free: 866-771-6930 Tel: (860) 767-3013 Fax: (860) 760-6797 leslie@essexyachtsales.com
<http://www.essexyachtsales.com>

EXCLUSIONS

Exclusions to Inventory shall be personal possessions, dinghy, outboard motor, plus any items not specifically mentioned in the above inventory.

MECHANICAL DISCLAIMER

Engine hours are as of the date of the original listing and are a representation of what the listing broker is told by the owner and/or actual reading of the engine hour meters. The broker cannot guarantee the true hours. It is the responsibility of the purchaser and/or his agent to verify engine hours, warranties implied or otherwise and major overhauls as well as all other representations noted on the listing brochure

Disclaimer

The Company offers the details of this vessel in good faith but cannot guarantee or warrant the accuracy of this information nor warrant the condition of the vessel. A buyer should instruct his agents, or his surveyors, to investigate such details as the buyer desires validated. This vessel is offered subject to prior sale, price change, or withdrawal without notice.

Photos



SELKIE



Portside View



Bow Profile



Aft View Showing Full Beam Master Stateroom



Transom Door and Swim Platform



Safe Access To Flybridge

Essex Yacht Sales - Leslie Quarrier
Brewer Dauntless Shipyard, 37 Pratt St, Essex CT
Toll-free: 866-771-6930 Tel: (860) 767-3013 Fax: (860) 760-6797 leslie@essexyachtsales.com
<http://www.essexyachtsales.com>



Spacious Flybridge



Flybridge Refrigerator, Custom Top



Flybridge Seating w/Beautiful Table



Grill



Winch For Dinghy Davit



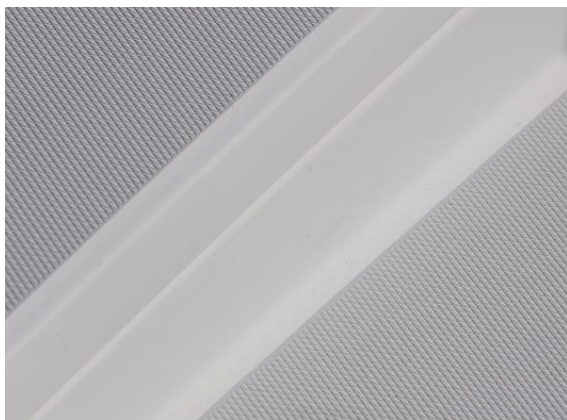
Transom W/Convenient Transom Door



Beautiful Brightwork



Proud Name



Non-Skid Decks and Gelcoat Detail



Name & Light Board



Pulpit & Windlass



Large Forward Berth



Spacious Forward Hanging Locker



Forward Head



Separate Shower Stall



Bright, Open U-Shaped Down Galley



Galley Viewed From Above



Large Convection Oven



3 Burner Propane Stove



Large Sub-Zero Refrigerator



Side By Side Sub-Zero Freezer and Refrigerator



Brass Ships Chronometer & Barometer



Lower Helm Station



Raymarine Hybrid Touchscreen



Xantrex Controller



Master Stateroom Seating Area & Desk



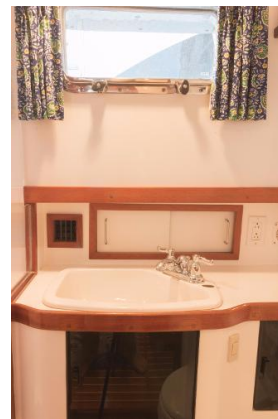
Superb Master Stateroom Center Queen



Aft door and hatch from Master Stateroom



Master Head w/Separate Shower Stall



Master Head



Full Height Cedar-Lined Master Hanging Locker



Privacy doors to Master Stateroom



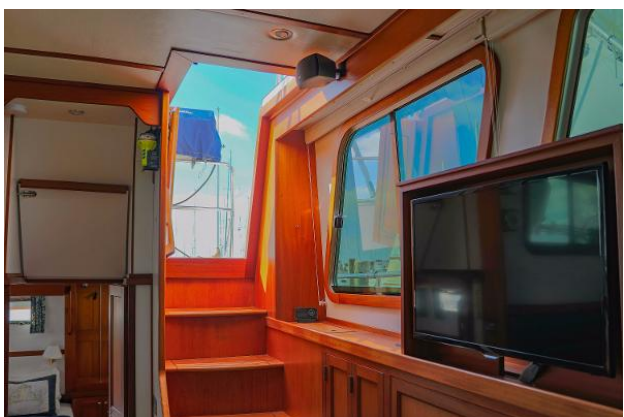
Large Custom U-Shaped Settee in Salon



Very Spacious Salon w/Desk to Port



Large TV on Pop-Up Lift in Salon Entertainment Center



Door and Hatch From Salon to Flybridge



Bose Audio System



EPIRB



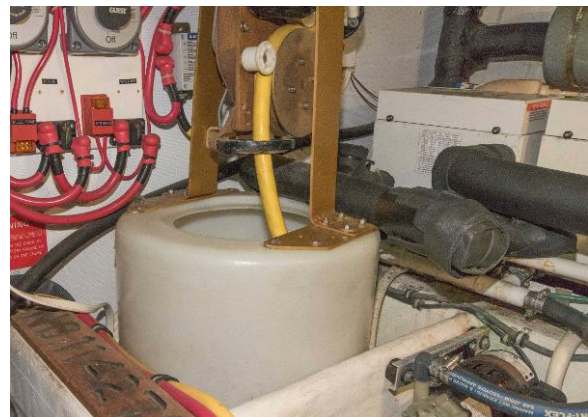
Onan Generator in Sound Shield Enclosure



Yanmar 500 HP Starboard Engine



A/C Units



Cablemaster



Water Heater



Handsome Profile



Journey's End