



February 2018

THE LONG ISLAND SOUNDER



ASHRAE Long Island Chapter, Region I...*Founded in 1957*

www.ashraeli.org

American Society of Heating, Refrigerating and Air Conditioning Engineers, Inc.

Inside this issue:

President's Message	1
LI Chapter Officers	2
Meeting Schedule	3
LI Past Presidents	4
PAOE	4
January Meeting Pictures	5-6
Program	7
YEA	8
Research Promotion	9
Membership	10
CTTC	10
Refrigeration	11
Student Activities	12
GGAC	13
History	14
ASHRAE Social Media	15
ASHRAE Certifications	16
Golf Outing 2018	17-19
BOG Minutes	20-21
Advertisements	22-24

President's Message

Welcome to the February issue of the "Long Island Sounder". We thank all those who attended last month's meeting. We were fortunate enough to have Donovan Gordon from NYSEDA give a great presentation on their work in New York State. It was great to see their road map for reducing carbon emissions.



We would like to welcome our new student members who just started at student chapter at New York Institute of Technology. A special thanks to Murat who made help bring this to fruition.

If any companies have openings for internships now is the time to find some students to fill them. Please see our Student Activities Chair, Murat Bayramoglu or myself so we can get your position posted with our student advisors.

National Engineers Week is February 18-24. Engineers Week celebrates us— Engineers, Engineering Students, and Technicians— inclusive of all the amazing things we do every day to make the world a better place. Our local EJCLI chapter will be having a one day seminar on February 15 with multiple opportunities to gain PDH credits as well. Further information can be found on www.ejcli.org.

CHAPTER MONTHLY MEETING

DATE:	Tuesday, February 13, 2018
TIME:	6:00 PM - Cocktails/Dinner 7:00 PM - Dinner Presentation 8:45 PM - Conclusion
LOCATION:	Westbury Manor 1100 Jericho Tpke. Westbury, NY 11590
FEES:	
Members -	\$45.00
Guest -	\$50.00
Student -	\$15.00

*Reservations requested, but not required.
Call (631) 632-2791*

Please save the date, May 7th, 2016, for our ASHRAE LI Golf Outing. We will send information shortly for registration. As always, I thank you for your support of ASHRAE Long Island.

Andrew B. Dubel, P.E., LEED AP
President
Long Island Chapter

Check the ASHRAE Website for Society news
and to join/renew membership!

<http://www.ashraeli.org>

Long Island Chapter Officers & Committees

ASHRAE 2017/2018 OFFICERS

POSITION	NAME	PHONE	EMAIL
President	Andrew B. DuBel, PE	516.484.1020	president@ashraeli.org
President-Elect	Richard Halley	718.269.3809	president_elect@ashraeli.org
Vice President	Frank Paradiso	631.632.2791	vice_president@ashraeli.org
Financial Secretary	James Hanna	718.269.3768	finsec@ashraeli.org
Treasurer	Bill Artis	201.395.3750	treasurer@ashraeli.org
Secretary	Matthew Vitrano	212.643.9055	secretary@ashraeli.org
Board of Governors	Murat Bayramoglu	631.312.8818	bog1@ashraeli.org
Board of Governors	Michael Nigro	212.643.9055	bog2@ashraeli.org
Board of Governors	Elizabeth Jedrlinic	516.490.1621	bog3@ashraeli.org
Board of Governors	Andrew Blom	631.626.1695	bog4@ashraeli.org
Board of Governors	Donald W. Kane, PE	516.524.7258	bog5@ashraeli.org




ASHRAE 2017/2018 COMMITTEES

COMMITTEE	NAME	PHONE	EMAIL
Programs & Special Events	Richard Halley	718.269.3809	programs@ashraeli.org
Membership (MP)	Bill Artis	201.395.3750	membership@ashraeli.org
Refrigeration	Bill Artis	201.395.3750	
Chapter Technology Transfer (CTTC)	Matthew Vitrano	212.643.9055	cttc@ashraeli.org
Grassroots Government Activities (GGAC)	Andrew Blom	631.626.1695	ggac@ashraeli.org
Newsletter Editor	Liset Cordero	212.643.9055	editor@ashraeli.org
Research Promotion (RP)	Frank Paradiso	631.632.2791	rp@ashraeli.org
Historian	Michael Nigro	212.643.9055	historian@ashraeli.org
Student Activities (SA)	Murat Bayramoglu	631.312.8818	sa@ashraeli.org
Young Engineers in ASHRAE (YEA)	Elizabeth Jedrlinic	516.490.1621	yea@ashraeli.org
Webmaster			web@ashraeli.org
Nominating	Michael Gerazounis, PE, LEED AP	212.643.9055	nominating@ashraeli.org
Reception & Attendance	Andrew Blom	631.626.1695	reception@ashraeli.org
PR & Engineering Joint Council of LI (EJCLI) Liaison	Andrew Manos, LEED AP	631.632.2791	pr@ashraeli.org
Golf Outing	Peter Gerazounis, PE LEED AP	212.643.9055	golf@ashraeli.org
Awards	Brian Simkins	203.261.8100	bsimkins@accuspecinc.com

ASHRAE LI, P.O. Box 79, Commack, NY 11725

Editor's Note: The appearance of any technical data, editorial material, or advertisement in this set of publications does not constitute endorsement, warranty or guaranty by ASHRAE of any product, service, procedure, design, or the like. ASHRAE does not warrant that information is free from errors, and ASHRAE does not necessarily agree with any statement or opinion in this set of publications. The entire risk of the use of any information in this set of publications is assumed by the user. Statements made in this publication are not expressions of the Society or of the Chapter and may not be reproduced without special permission.

Chapter Monthly Meeting - Program for 2017/2018

September 12, 2017 * At Westbury Manor  Dinner Presentation – Basic Principles of Grooved Mechanical Joints Presenter: Stanley Funk **1 PDH** Refrigeration Night	March 13, 2018 * At Westbury Manor Dinner Presentation - Chillers! Chillers! Chillers! Presenter: Justin Wieman **1 PDH** YEA Night
October 10, 2017 * At Westbury Manor  Dinner Presentation— Boiler Efficiency & Performance Presenter: Ian Rowburrey **1 PDH**	April 10, 2018 Annual Field Trip
November 14, 2017 * At Westbury Manor  Dinner Presentation-- Revised Duct Construction Standard Presenter: Mark Terzigni, SMACNA National Director **1 PDH** Joint meeting with SMACNA Membership Promotion Student Activities Night and YEA Night Resource Promotion Night	May 7, 2018 * Cherry Valley Club, Garden City, NY ANNUAL GOLF OUTING
December 12, 2017 * At Westbury Manor  Dinner Presentation-- Responsible Use of Refrigerants Presenter: Julian R. de Bullet, ASHRAE Distinguished Lecturer **1 PDH**	May 8, 2018 * At Westbury Manor Dinner Presentation - Chemical Treatment Presenter: Jerry Union **1 PDH** Refrigeration Night Student Activities Night
January 9, 2018 * At Westbury Manor  Dinner Presentation– NYSERDA Rebates Presenter: Donovan Gordon **1 PDH**	June 12, 2018 * At Westbury Manor Free Buffet Dinner for Members PAST PRESIDENTS NIGHT & OFFICER INSTALLATION STUDENT SCHOLARSHIPS TO BE AWARDED ASHRAE History Quiz and prize Give-A-Ways
January 20-24, 2018  ASHRAE Winter Meeting Chicago, IL	June 2018 (4pm-8pm) * Dixie II @ Captree State Park Boat Basin, NY ANNUAL FISHING TRIP
February 13, 2018 * At Westbury Manor – Dinner Presentation– Energy Efficient HVAC Strategies Presenter: Daniel H. Nall, P.E. **1 PDH** Membership Promotion Night Resource Promotion Night	June 14, 2018 Joint YEA Event with LI, NYC & Westchester (Details to follow)
February 18-24, 2018 NATIONAL ENGINEERS WEEK EJCLI Seminars	August 16-18, 2018 CHAPTERS' REGIONAL CONFERENCE (CRC) REGION I JERSEY CITY, NJ
February 27, 2018 YEA Event - Go Kart @ 6PM RPM Raceway Farmingdale, NY	

Long Island Chapter - Past Presidents

1958	H. Campbell, Jr. PE	1988	Michael O'Rourke
1959	Clyde Alston, PE	1989	Mel Deimel
1960	Sidney Walzer, PE	1990	Robert Rabell
1961	Sidney Gayle	1991	Gerald Berman
1962	William Kane	1992	Donald Stahl
1963	Louis Bloom	1993	Ronald Kilcarr
1964	Milton Maxwell	1994	Jerald Griliches
1965	Will Reichenback	1995	Walter Stark
1966	Joseph Minton, PE	1996	Joe Marino
1967	Irwin Miller	1997	Norm Maxwell, PE
1968	Walter Gilroy	1998	Alan Goerke, PE
1969	Charles Henry	1999	Frank Morgigno
1970	William Wright	2000	Michael Gerazounis, PE, LEED AP
1971	Louis Lenz	2001	Ray Schmitt
1972	Ronald Levine	2002	Steven M. Stein, PE
1973	Henry Schulman	2003	Andrew Braum, PE
1974	Myron Goldberg	2004	Claudio Darras, P.E.
1975	John N. Haarhaus	2005	Craig D. Marshall, P.E.
1976	Richard K. Ennis	2006	John Nally
1977	Kenneth A. Graff	2007	Peter Gerazounis, PE, LEED AP
1978	Evans Lizardos, PE, LEED AP	2008	Steven Friedman, PE, HFDP, LEED AP
1979	Albert Edelstein	2009	Steven Giammona, P.E., LEED AP
1980	Ralph Butler	2010	Nancy Román
1981	Robert Rose, PE	2011	Carolyn Arote
1982	Timothy Murphy, PE	2012	Brian Simkins, LEED AP
1983	Leon Taub, PE	2013	Andrew Manos, LEED AP BD+C
1984	Raymond Combs	2014	Richard L. Rosner, P.E.
1985	Edward W. Hoffmann	2015	Thomas J. Fields, P.E., LEED AP
1986	Jerome T. Norris, PE	2016	Donald Kane, P.E.
1987	Abe Rubenstein, PE		

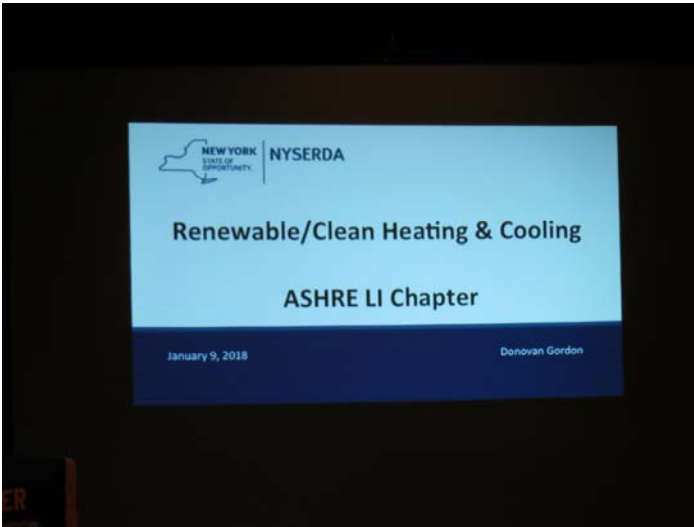
PAOE POINTS FOR 2017/2018

Chapter Members	Membership Promotion	Student Activities	Research Promotion	History	Chapter Operations	CTTC	GGAC	Electronic Communications	Chapter PAOE Totals
282	1,055	150	860	300	1,080	250	500	225	4,420

January Meeting Photos



January Meeting Photos



February Meeting Program



Dinner Presentation

“Energy Efficient HVAC Strategies ”

Presented by

***Daniel H. Nall, P.E. FASHRAE, FAIA,
LEED Fellow, BEMP, HBDP. CPHC
Vice President, Syska Hennessy Group***

**Attendees
Will Earn
1 PDH!**

DATE:	TUESDAY FEBRUARY 13, 2018		
TIME:	6:00 PM - Cocktails and Hors D'oeuvres 7:00 PM - Dinner Presentations 8:45 PM - Conclusion	Fee:	\$ 45.00 Member \$ 50.00 Guest \$ 15.00 Student
LOCATION:	WESTBURY MANOR (516) 333-7117 1100 Jericho Tpke., Westbury, NY 11590 Directions are posted at @ www.ashraeli.org.		
PRESENTATION:	<p>This month's presentation examines several different innovative approaches to HVAC systems that demonstrate significant improvements compared with conventional systems, including:</p> <ul style="list-style-type: none"> • Improving the efficiency of the heating and cooling source for the building by operating it to provide the highest temperature cooling and lowest temperature heating required to achieve the desired psychrometric outcome. • Using both diurnal and annual storage of heat rejected from the cooling process to reduce make-up heat for heating mode of water source heat pump systems. • Selective application of low temperature cooling to achieve desired space humidity goals with minimized reheat. <p>All attendees will receive 1 PDH.</p>		
ABOUT OUR SPEAKER:	<p>Mr. Nall is a Vice President of Syska Hennessy Group in New York. A graduate of Princeton University and Cornell University, he is a Registered Architect, a Professional Engineer, an ASHRAE Life Fellow, a Fellow of the AIA, a LEED Fellow, a certified Building Energy Modeling Professional, a High Performance Building Design Professional and a Certified Passive House Consultant. ASHRAE activities include the ASHRAE Advanced Energy Design Guide Steering Committee, the Project Committee for the Advanced Energy Design Guide for Zero Energy K12 Schools, the Building Energy Quotient Ad-Hoc and Oversight Committees, and TC 4.7. He helped author the 30% Advanced Energy Design Guides (AEDG's)'s for Small Office Buildings, Small Retail Buildings, Roadside Lodging and Small Warehouses, and the 50% AEDG's for Medium Office Buildings, Medium and Big Box Retail Buildings, and Grocery Stores. He is one of the four participants in the “<i>Engineer's Notebook</i>” monthly column in the ASHRAE Journal. He received the ASHRAE New York Chapter Distinguished Service Award in 2011 and the ASHRAE Distinguished Service Award in 2012. He has been a member of the Board of Directors of the USGBC NY Chapter, the vice chairman of the USGBC Energy and Atmosphere Technical Advisory Group and a member of the AIA National Committee on the Environment. He is the author of over 40 papers in technical and professional journals. He has been a Visiting Lecturer at the University of Pennsylvania, Cornell University and Princeton University Schools of Architecture and an Adjunct Associate Professor of Architecture at Columbia University.</p>		

CHAPTER MAY NOT ACT FOR SOCIETY

An International Organization

Young Engineers in ASHRAE (YEA)

I hope everyone enjoyed the Winter Conference! This year I had the opportunity to participate in the LeaDRS program. The LeaDRS program is offered at both the Summer and Winter conferences. It allows a YEA member to shadow the current DRC as they navigate the conference. I was lucky enough to shadow the current Region I DRC, Bill Walter. Through his schedule I was able to sit in on DRC meetings, Board meetings, Tech Council, the Refrigeration Committee, UNEP, ISO and a technical committee. Because Bill participates in a large variety of ways, I really got a chance to experience all the possibilities within ASHRAE at the regional level. There are so many different ways to contribute. Before this conference I did not even realize that all meetings were open to everyone until they went into executive session. Members are even given a direct chance to speak to the board directly on issues they would like the board to discuss.



I also had a great opportunity to network with the many different people throughout ASHRAE, including the President. I was introduced to ASHRAE members from all over the United States and the world. I made new connections, learned about other chapters and spoke with people all across the industry. Overall, I learned so much about how ASHRAE works and what it has to offer.

I highly recommend this experience to anyone interested in participating in ASHRAE at the local or regional level. The application process is fairly simple. Follow the link below to get the application, fill it out and send it to the current Region I YRC. The region sponsors this so that you are reimbursed up to \$1250. Please reach out to me with any questions.

<https://www.ashrae.org/membership--conferences/young-engineers-in-ashrae/ashrae-region-leadrs-program>

Next YEA Event:

Our next YEA sponsored event will be Go Karts at RPM Raceway in Farmingdale. We have two races reserved! In the first race you will get your trial time, which will determine your spot for the final, trophy race. The winner will receive a trophy. All are welcome! Bring your family and friends! Please RSVP to me as soon as possible.

When: February 27, 2018
Time: 6 PM
Where: RPM Racetrack, 40 Daniel St, Farmingdale, NY 11735
Cost: \$ 40 / per person to drive

Elizabeth Jedrlinic
YEA Chair
Elizabeth.jedrlinic@trane.com

Research Promotion

My name is Frank Paradiso and I am your RP chair for the 2017-2018 year for the Long Island ASHRAE chapter.



ASHRAE has a \$2.5 million dollar funding raising goal. This supports 140 research projects with a combined value of more than 15 million. The bar has been set pretty high by our former RP Chairs for our chapter's goals. This year we have a goal of \$19,000. Every year we try to exceed our goal and reach towards challenge goal. With your help I believe we can achieve it.

Our current RP year to date amount is \$7,692 which is about 40% of our goal.

I would like to acknowledge and thank all those who were generous enough to have donated early in ASHRAE's 2017-2018 RP campaign:

INDIVIDUALS

Peter Gerazounis, PE
John D Nally
Donald W Kane, PE
Andrew E Manos
Andrew B Dubel
Matthew Vitano
Andrew B Dubel
Michael Nigro
Frank Paradiso
Ronald J Kilcarr, PE, CEM
James Hanna
William Artis, Jr
Murat Bayramoglu, MS
Thomas Fields, PE
Richard I Halley
Andrew Charles Blum
Steven Benkovsky
Richard J. Pearson
James R. Tauby, PE

COMPANIES

Catan Equipment Sales
Wales Darby Incorporated
Platsky/Marplat
Technical Air Systems, Inc.
Dagher Engineering, PLLC
Accuspec, Inc
Gil-Bar Industries, Inc.
Dagher Engineering

CONTRIBUTIONS CAN BE MADE IN THE FOLLOWING WAYS:

1) You can mail your checks, made out to ASHRAE Research Promotion, to:

Frank Paradiso
ASHRAE Research Promotion Chair
c/o Stony Brook University Research and Support Services,
Suite 160 Development Drive
Stony Brook, NY 11794-6010

2) You can bring your check to any of the meetings and give it to me. I will mail it into headquarters.

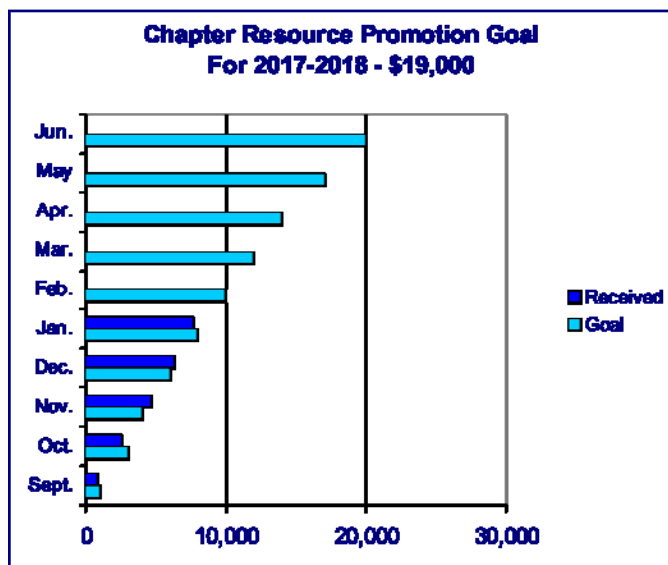
3) You can contribute via PayPal from the ASHRAE LONG ISLAND web site, just click on the donate button.

4) You can contribute directly on-line. www.ashrae.org

*** Please make sure you accredit your contribution to the LONG ISLAND CHAPTER 006 ***

Thank you again for all of your support!

Frank Paradiso
Research Promotion Chair



Membership Promotion

February will be our second Membership Promotion Night, where we will be recognizing our new member since July 1st with ASHRAE pins. We have some other events coming in the near future, such as our “Career Development” event planned for April of this year and the YEA Go-Kart extravaganza planned for the end of February- check the YEA section of the newsletter and watch for additional flyers being emailed with more info, and remember “If ya aint first, you’re last”.

Bill Artis
Membership Chair



CTTC

Everyone, welcome to the February Sounder! This month, I want to point out some new design guides that ASHRAE is working on. More and more zero energy buildings are popping up all over the country. Advanced Energy Design Guides (AEDG's) are guides focused on successfully designing zero energy buildings. ASHRAE will be collaborating to publish this series of guides, as told by this article by Paul A. Torcellini, PH.D., P.E., Member and Shanti D. Pless, Associate Member ASHRAE:

“ASHRAE is taking the lead by publishing—in partnership with the American Institute of Architects (AIA), the Illuminating Engineering Society (IES), and the U.S. Green Building Council (USGBC) and with financial and technical support from the U.S. Department of Energy (DOE)—a new series of advanced energy design guides (AEDGs) focused on zero energy buildings. The forthcoming Advanced Energy Design Guide for K–12 School Buildings: Achieving Zero Energy (K–12 ZE AEDG) is the first in this series. All the AEDGs are free downloads from ASHRAE (www.ashrae.org/freeaedg).”



Schools will be the first guide in this series for a few reasons – most notably that they are common, similar, and comprise 7.7% of the country's commercial energy consumption. These design guides will cover from Owner planning all the way to energy modelling the building.

Reference:

<https://www.ashrae.org/resources--publications/periodicals/ashrae-journal/features/advanced-energy-design-guide-k-12-next-generation-of-school-design-operation>

Don't forget to join us on February 13th at the Westbury Manor!

Matthew J. Vitrano
CTTC Chairman

Refrigeration

Reprinted courtesy of <http://www.dialogdesign.ca/open-dialog/rogers-place-achieves-leed-silver/>

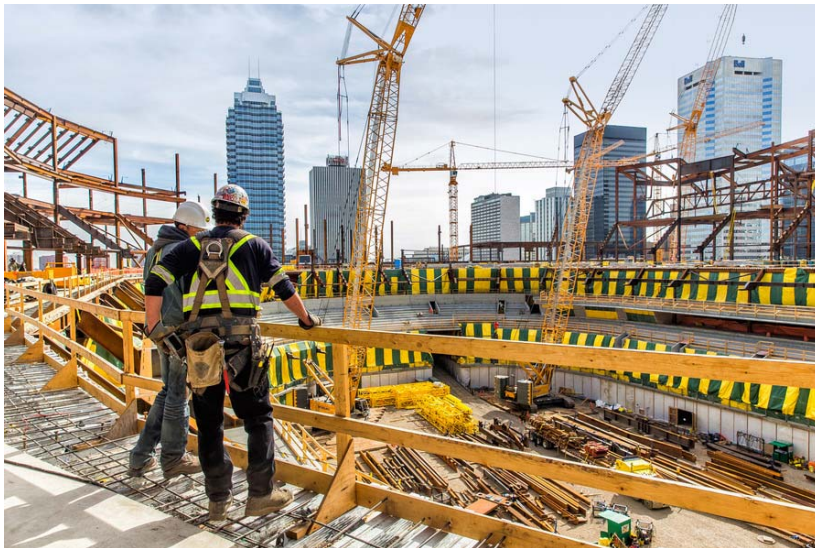
Rogers Place, home of the Edmonton Oilers in the heart of downtown Edmonton's ICE District, has reached a new milestone: **LEED® Silver!** It's the first NHL facility in Canada that is built to LEED® Silver standards, and DIALOG is proud to have a role in making that happen.

As the lead sustainability consultants on the project, we led the client, construction, and design teams through the sustainability strategy. We held early stage workshops with visioning, provided direction throughout the project, and administered the LEED® application.

"Designing and building a facility of this magnitude to meet rigorous green building standards is an ambitious undertaking, but one with the potential to have a positive impact on visitors, where they can see sustainability in action. This certification sets a strong example for other large venues in Canada that every building can achieve superior environmental performance."

-Thomas Mueller, President and CEO of Canada Green Building Council.

As part of the LEED® New Construction certification, a major consideration is the process and materials used for construction. PCL did an excellent job of managing sustainable efforts throughout the construction by committing to green building products and waste management, and managing air quality throughout the build.



Rogers Place continues to reduce their environmental impact by committing to green operations including cleaning, education, and food waste handling.

"Oilers Entertainment Group is a strong advocate for environmental design and operation. We also want to acknowledge the many committed staff at OEG who contributed to this milestone. We are all so very proud of the accomplishment."

-Susan Darrington, Executive Vice President, Rogers Place.

Bill Artis
Refrigeration Chair

Student Activities

Murat Bayramoglu
Student Activities Chair

ASHRAE-LI

GUEST SPEAKER CAREER SHOW & TELL

WHEN

Feb 16th, 12pm-2pm

WHERE

**NYIT, Harry Schure
Hall 130**

Old Westbury, NY

**FEATURING Local Professional Members
Presentation By:**

Hooman Daneshmand, PE

**SYSTEMS AND PEOPLE
IN HVAC**

**ANY YEAR
STUDENT
INTERESTED
IN BUILDING
TECHNOLOGY
CAREERS**

**FREE TO
ATTEND**

Email:
ekamel01@nyit.edu

BENEFITS

Employment
Networking
Career exploring
Scholarships
Design competitions

**BENEFITING
BUILDINGS**

Architecture
Component Design
Systems Integration

**Free Pizza & Light
Refreshments**



Shaping Tomorrow's
Built Environment Today



School of
Engineering &
Computing Sciences



School of
Architecture
& Design

Grassroots Government Activities Committee (GGAC)

Day on the Hill:

Just a reminder, we're actively in the process of planning an event for GGAC called a "Day on the Hill". We'd love to have a few volunteers to come by and get involved. If you're interested, please let me know as soon as you can.

We're planning this with several regional chapters and I would greatly appreciate any participation. Details are still being ironed out.

New York Governor Sets New Goals for Energy Efficiency:

New York Governor Andrew Cuomo (D) unveiled an aggressive new energy efficiency initiative in his State of the State address. His proposal would:

- Expand Regional Greenhouse Gas Initiative and Reduce Emissions Equitably From the Highest-Polluting, High Demand "Peaker" Power Plants
- Issue Solicitations in 2018 and 2019 to Develop at Least 800 MW of Offshore Wind Projects and Foster Offshore Wind Industry and Workforce in New York State
- \$200 Million Investment to Meet Unprecedented Energy Storage Target of 1,500 Megawatts by 2025 In Order to Increase Transmission of Clean and Renewable Energy
- Create the Zero Cost Solar for All Program for 10,000 Low-Income New Yorkers
- Reconvene Scientific Advisory Committee on Climate Change Disbanded by the Federal Government
- Establishment of an Energy Efficiency Target by Earth Day (April 22)

[Read the entire proposal](#) for more information on this initiative.

Andrew Blom

Grassroots Government Activities Chair



History

History of Refrigeration-Timeline 1906-1939

Source:

<https://www.ashrae.org/resources--publications/history-of-refrigeration-timeline---1906-1939>

Packard markets first successful year-round auto air conditioning system	1939	
Albert Henne, co-inventor of the Chlorofluorocarbon Refrigerants, synthesizes refrigerant R-134a. In 1980 it was hailed as the best non-ozone depleting replacement for Chlorofluorocarbon.	1938	Window air conditioner marketed by Philco-York.
Chesapeake & Ohio Railroad begins running first overnight train with air conditioning, the "George Washington," between New York and Washington	1936	
	1936	United Air Lines uses air conditioning in its "three mile a minute" passenger planes.
	1932	
	1931	Frigidaire markets "Hot-Kold" year – round central system air-conditioning system for homes.
Home in Tucson, AZ installed a heat pump air conditioner	1930	
	1928	Chlorofluorocarbon refrigerants synthesized by General Motors Research Lab team of Thomas Midgley, Albert Henne and Robert McNary for Frigidaire.
Capillary tube refrigerant control invented by Thomas Carpenter	1926	
	1925	<i>The Aerologist</i> , the first air conditioning trade journal, published by E. Vernon Hill.
Gas fired absorption household refrigerator marketed by A.B. Elektrolux in Sweden.	1925	
	1916	Clarence Birdseye began experiments in quick-freezing
Air cooled electric self-contained household refrigerating unit, the DOMELRE, marketed by Fred Wolf Jr.	1914	
	1913	M. T. Zarotschenzeff began experiments in quick freezing
First International Refrigeration Exposition held in Chicago	1913	
	1911	Constant superheat (thermostatic) expansion incorporated in a multiple evaporator refrigeration system patented by Albert Marshall
First International Congress of Refrigeration. Paris	1908	
	1906	Willis Carrier patents "dew point control" system for precisely controlling humidity in a room.
First hospital to be air conditioned: Boston Floating Hospital	1906	
	1906	The term "air conditioning" coined by Stuart Cramer



Michael Nigro
History Chair

Join ASHRAE on Social Media!



Follow **ASHRAE on Twitter** @ashraenews for up-to-date news, events, and articles about HVAC&R. Search #MyASHRAE on Twitter to see member photos from around the world.

Follow us on [Twitter](#)



Most Popular Tweets

Does It Cost More To Build Green? Benefits include reduced operating costs & construction waste.

Online Thermal Comfort Compliance Tool Included In New ASHRAE User's Manual.

87% of households in the US have #AC, 5% do in India. India's tough choice on air-conditioning and climate.



The November issue of the Journal is tested for binding strength to see how many times a page can be turned before the binding would fail.

Harvard & SUNY Upstate Medical University find that workers are healthier and happier in certified green buildings.

ASHRAE Standard 90.1 has been redefining energy savings since 1975. A new version is available now.

Adapting historical buildings for sustainable reuse.

Get To Know ASHRAE



ASHRAE CERTIFICATIONS

Certification



ASHRAE, accredited by ANSI under ISO/IEC 17024 for the High-Performance Building Design Professional (HBDP) program, has certified more than 2,000 Built Environmental Professionals.

Energy Assessment

Energy Modeling

Commissioning

Healthcare
Facility Design

High-Performance
Building Design

Building Operations

ASHRAE certification programs:

- Are developed by industry practitioners who understand the knowledge and experience that are expected for superior building design and system operation
- Assure employers and clients of subject mastery
- Serve as a springboard for continued professional development
- Offer an easy-to-apply process

FOR MORE INFORMATION GO TO - <https://www.ashrae.org/education--certification/certification>

ASHRAE Golf Outing - Monday, May 7, 2018



19th Annual LI ASHRAE GOLF OUTING

Monday - May 7, 2018

Place: Cherry Valley Club
Brunch: 11:00 am
Shotgun: 12:30 pm
Reception: 5:30 pm
Dinner: 6:30 pm

This Event fills up fast, to guarantee a spot RSVP Soon.

(2) Foursome Limit Per Company.

Proper golf attire and shoes are required. Locker room and shower privileges are included.

CHECKS MUST BE IN BY APRIL 9, 2018 (No Exceptions)

Fax, Email or Mail entire sheet or cut this half and return

Name: _____ Company: _____
 Address: _____ Phone: _____
 City, State, Zip: _____ Fax: _____

I have read and understand the Cherry Valley Rules and Regulations (Signature): _____

Guest 1: _____ Company: _____
 Guest 2: _____ Company: _____
 Guest 3: _____ Company: _____



**Fund raising is primarily through the contributions of our sponsors.
 Please consider our sponsorship opportunities listed below.**

Please make check payable to:

ASHRAE – Long Island Chapter

Mail Checks To:

MG Engineering D.P.C.

Attn: Peter Gerazounis, P.E. LEED AP

116 West 32nd Street

New York, NY 10001

Fax No.: (212) 643-0503

Email: peter.gerazounis@mgdpc.net

Golf & Meals:	\$ 375 pp x _____	= \$ _____
Reception & Dinner:	\$ 150 pp x _____	= \$ _____
Sponsor Dinner:	\$1,000 <input type="checkbox"/> Yes	= \$ _____
Sponsor Lunch:	\$ 500 <input type="checkbox"/> Yes	= \$ _____
Sponsor Reception:	\$ 500 <input type="checkbox"/> Yes	= \$ _____
Sponsor Prizes:	\$ 500 <input type="checkbox"/> Yes	= \$ _____
Sponsor Beverage Cart:	\$ 500 <input type="checkbox"/> Yes	= \$ _____
Sponsor Hole:	\$ 200 <input type="checkbox"/> Yes	= \$ _____

ASHRAE Golf Outing - Monday, May 7, 2018

Cherry Valley Club
28 Rockaway Avenue at Third Street
Garden City, NY
Telephone: (516)746-4420
Fax: (516)746-4421



Program:

11 a.m. Brunch in the Clubroom & Lounge – including Omelet station, deluxe deli board with rolls, chicken scarpiello, danish, croissants, bagels & cream cheese, sliced nova, fresh fruit and cheeses, Good Humor ice cream cart.

12:30 p.m. Shotgun Start Golf – Playing individual scores. Prizes for long drive, closest to the pins, low gross and callaway. Refreshments at the halfway house will include packaged snacks and whole fresh fruit, hot dogs, beer & soda. A snack cart will also be on the course. Carts, forecaddies, driving range, locker room and showers are all included in the price.

5:30 p.m. Following Golf - Open Bar with hot and cold hors d'oeuvres in the Main Lounge. Fresh mozzarella with sundried tomatoes, cajun chicken, spring rolls, baby lamb chops, sesame chicken, turkey canapés, fried oysters, cheeses, fresh fruit, lobster halves, fresh clams & oysters, shrimp and crab claws.

6:30 p.m. Reception Dinner – Awards and raffle in the Main Dining Room. Carving stations of beef tenderloin & turkey breast. Chafing dishes of chicken & salmon featuring the chef's specialty, pasta station with marinara or vodka sauce, and choice of tossed or Caesar salad. Viennese dessert table following the dinner featuring pastries, fruit, cookies, assorted cakes and pies. Full beverage service throughout is included.

Women are also invited to attend and participate. There are locker room facilities available. The Cocktail hour and Dinner will also be available for those who cannot attend during the day for the golf.

Note: We are limited to 128 golfers. Openings will be filled on a first come-first serve basis. Corporate sponsorships will be available and raffle items will be welcome. Proper golf attire is a requirement for the golf course. Soft spikes are required. Please wear a jacket for the dinner.

Directions:

From the North Shore of Long Island: Take the Long Island Expressway to Exit 34 South (New Hyde Park Road Southbound), Grand Central Parkway (Northern State Parkway) to Exit 26 South (New Hyde Park Road Southbound) or Jamaica Avenue (Jericho Turnpike) Eastbound to New Hyde Park Road. Travel Southbound on New Hyde Park Road for approximately 5 to 7 miles to Stewart Avenue (You will cross over a set of railroad tracks). Take Stewart Avenue eastbound for approximately 1-1/2 miles to Cherry Valley Avenue. Travel Southbound on Cherry Valley Avenue for 1/2 mile, Cherry Valley Avenue becomes Rockaway Avenue. Continue on Rockaway Avenue and the entrance to Cherry Valley Club will be on your right.

From Local Points North: Take Old Country Road or Stewart Avenue to Franklin Avenue. Travel Southbound on Franklin Avenue to Fourth Street (just after crossing over railroad tracks). Turn right on Fourth Street and continue until it ends (Rockaway Avenue). Cross over Rockaway Avenue into the Cherry Valley Club's parking lot.

From the South Shore of Long Island: Take the Southern State Parkway to Exit 19 (Peninsula Boulevard-Hempstead/Garden City). Travel Northbound on Peninsula Boulevard for approximately 1/2 mile to President Street. Bear left on President Street (Northbound) for approximately one mile and cross over Hempstead Turnpike. President Street will become Cathedral Avenue. Continue on Cathedral Avenue for one mile to Fourth Street. Make a left on Fourth Street (Westbound) and continue until it ends (Rockaway Avenue). Cross over Rockaway Avenue into the Cherry Valley Club's parking lot.

From Local Points South: Take Hempstead Turnpike to Franklin Avenue. Travel Northbound on Franklin Avenue to Fourth Street. Turn left on Fourth Street and continue until it ends (Rockaway Avenue). Cross over Rockaway Avenue into the Cherry Valley Club's parking lot.

ASHRAE Golf Outing - Monday, May 7, 2018

Cherry Valley Club Golf Outing Guidelines



To add the enjoyment of your day, we ask that you abide by Cherry Valley Club's basic rules of The Club, dress, golf etiquette & safety, golf carts, and care of the course.

Club Rules

1. **Smoking is not permitted in the Club House.**
2. **Cell Phones are permitted in the parking lot only. Use of Cell Phones beyond the parking lot is strictly prohibited. This includes the Golf Course.**

Dress Code

1. Jeans, designer or otherwise, are not acceptable on club property. This not only includes pants, but skirts, and cut-offs.
2. T-shirts and tank tops are not in keeping with the atmosphere of the club and as such, are not acceptable. The definition of T-shirt includes those with psychedelic coloring or suggestive printing.
3. If the Main Dining room is going to be utilized for any purpose, jackets are required.
4. Short shorts are not permitted on the golf course, practice tee or putting green by either male or female. Bermuda shorts of acceptable length are permitted. Jogging attire and denim pants are not considered proper attire for the golf course.
5. **Soft spikes** are mandatory at all times on our fine golf course. If your shoes need soft spikes, arrive early so we can change them. There is a nominal fee. There is **no** exception to this rule.

Golf Etiquette and Safety

1. Slow play shows lack of consideration for the players in your group and, more important, for the players behind you. Golf is made much more enjoyable if all players adhere to the following points in the conduct of play:
 - Minimize the time spent looking for balls by watching the flight of balls hit by everyone in your group. If a ball appears to be lost or out of bounds, hit a provisional ball before leaving the tee.
 - Signal the players behind you to play through if it becomes apparent that a ball will not easily be found and you are holding up play.
 - Don't rush addressing and striking the ball but move briskly between shots.
 - If your ball is some distance from the golf cart and the exact club selection is in doubt, take several clubs with you when you leave the cart to walk to the ball.
 - When play reaches the area of the green, park the golf cart(s) behind the green or adjacent to the next tee. Walk briskly off the rear or side of the green after putting out. Mark your score cards after your group is off the green.
 - Once a score of double par has been posted, pick up and move on to the next hole.
2. No player should play until the players in front are out of range.
3. If your ball appears headed for a player or group of players immediately shout "fore" in a loud clear voice.
4. No one should move, talk or stand close to or directly behind the ball or the hole when a player is addressing the ball or making a stroke.

BOG Meeting Minutes

American Society of Heating, Refrigerating and Air-Conditioning Engineers, Inc.

BOG Meeting, Long Island Chapter
 Tuesday January 9, 2018
 5 PM
 Westbury Manor

Call to Order

Secretary (Matthew Vitrano)

Meetings minutes - Comments/Additions– approval last meeting

President (Andrew Dubel) Chapter Operations [min-600/Par-1200/980](2720)

- **PAOE- Keep updated**
- **Sounder Articles**
- o Due January 24th
 Everyone please check their PAOE points.

Programs (Richard Halley)

- Balance of schedule
- Cocktail Hour Sponsors **Ongoing**
- IFMA?
 Fill out schedule for sounder

Chapter Technology Transfer (Matthew Vitrano) [min-450/par-1050/150] (1775)

- DL Request – Update with actual date. Coordinate with Bill **Ongoing**
 Facebook Updates

Treasurer (Bill Artis)

- Current Balance **10,449.00. 5,398.88 in paypal.**
- Outstanding expenses
- Leadership 2.0 airfare **All paid**
 Chapter Budget Status

Grassroots Government Advocacy (Andrew Blom) [min-500/par-650/0] (1800)

- Activities? **Day on the hill scheduled for end of May or beginning of June.**
 USGBC or ?

Historian (Michael Nigro)[min-100/par-300/300] (1415)

- Articles/interviews of past presidents
 Digitizing records –Status

Honors and Awards Chair (Brian Simkins)

- Service awards/Technical Awards
 Candidate Projects

Research Promotion (Frank Paradiso) [min-800/par-1050/0] (3032)

- Vendor Book – Printing? **Ongoing**
- 50/50 **Ongoing. Adding more consolation prizes.**
 Goal 30? **\$6952.00 Hit 30% goal**

BOG Meeting Minutes (Cont'd. from Page 16)

Refrigeration (Bill Artis)

- Updates?
Field trip **Brookhaven**

Membership Promotion (Bill Artis) [min-500/par-800/805] (1495)

- Membership Upgrades
- Delinquency report?
- New Members this month? **+3 members**
- Planned Events? **Seminar at Javits center or similar. Potential joint meeting with NYC. Possibly use DL allocation for this. Should a Liaison attend the MACC meetings?**
- Events Budget?

Student Activities (Murat Bayramoglu) [min-300/par-500/50] (770)

- Scholarships
- Student membership update. **Joint student meeting on 2/16/18 12:00-2:00 PM at NYIT**
- Stony Brook Chapter
- Suffolk
- Hofstra
NYIT

YEA (Elizabeth Jedrlnic)

- Events? **Go-Karting 2/20/18. Joint event 6/21/18 Tentative**
Budget?

Reception & Attendance (Mike Nigro)

Electronic Communications[min-250/par-500/225](0)

- Temp address
- New site active!
Recovery of old address **Ongoing**

Golf (Peter Gerazounis/Tom Fields)

New date?

New Business **EJCLI engineers week in Feb.**

Time/Place of next BOG Meeting – February 13, 2018 – Westbury Manor – 5:00 PM

Motion to Adjourn **Approved**

ADVERTISEMENTS**PLACE YOUR AD HERE****OR
HERE****OR
HERE****OR
HERE****OR
HERE**

AN AD OR BUSINESS CARD LISTING IS A GREAT WAY TO GET YOUR COMPANY'S NAME IN FRONT OF THE HUNDREDS OF LI CHAPTER MEMEBERS, AND TO HELP SUPPORT THE CHAPTER'S ACTIVITIES.

If you would like to place an advertisement in the Long Island Sounder, please contact our Chapter Financial Secretary, James Hanna @ 718.269.3768 or by email at finsec@ashraeli.org for further details. Thank you.

Rates (includes all issues September-June):

Business Card \$200

Half Page \$500

Triple Size \$350

Full Page \$800

ADVERTISEMENTS

**PLACE YOUR
AD HERE**

GB₁ GIL-BAR INDUSTRIES

MATT ROMANELLI
E-MAIL: MROMANELLI@GIL-BAR.COM

NEW YORK OFFICE
5 WEST 19TH STREET
NEW YORK, NY 10011
TEL: (212) 331-8272
FAX: (212) 331-8273

LONG ISLAND OFFICE
25 NEWBRIDGE ROAD
HICKSVILLE, NY 11801
TEL: (516) 216-4310
FAX: (516) 869-4042



631-491-1300 x16
FAX 631-491-8551

Ultimate Power Inc.

INDUSTRIAL BURNERS • BOILERS
GAS • OIL • BURNER SERVICE • A/C & INSTALLATION
NATIONAL BOARD CERTIFIED "R" STAMP REPAIR CO.
DDC CONTROL SYSTEMS
MECHANICAL CONTRACTORS FOR OVER 36 YEARS

RONALD MILANO

45 NANCY STREET
WEST BABYLON, NY 11704-1498

EMAIL: RMILANO@ULTIMATE-POWER.COM

Leonard Van Sicklin
President



Mechanical Services Inc.
• HEATING & AIR CONDITIONING •
• SHEET METAL • SERVICE •

440 Wyandanch Avenue
North Babylon, NY 11704
lv@anronac.com
www.anronac.com

Phone: 631-643-3433
Fax: 631-491-6983
Cell: 631-860-4349

== JAR ==

J. A. Robertson, PE
Mechanical Engineer
HVAC/Plumbing System Design

P.O. Box 4982
Richmond, Virginia, 23220
jar4d@alumni.virginia.edu
Licensed: DC/MD/VA

**PLACE YOUR
AD HERE**

**PLACE YOUR
AD HERE**

Frank D. Morgigno - President/CEO fm@atiofny.com

ATI Applied Technologies Of NY, Inc.
Manufacturers Representatives

90 Plant Ave. • Ste. 110 • Hauppauge, NY 11788
Tel: 631-331-0215 • Fax: 631-928-4625
www.atiofny.com

SIEMENS

Industry

Siemens Industry, Inc.
Building Technologies Division

50 Orville Drive
Bohemia, NY 11716
USA

Tel: +1 631 218-1000 Ext. 214
Fax: +1 631 218-1009
Mobile: +1 516 924-2913
vincent.catalano@siemens.com
usa.siemens.com/buildingtechnologies

Vincent Catalano, C.E.M.
Account Manager

**chimney
DESIGN
solutions®**

134 W. 29TH ST., 11TH FL., NY, NY 10001
800-685-7077 FAX: 212-685-4777
chimney design solutions.com

**PLACE YOUR
AD HERE**

ADVERTISEMENTS

**PLACE YOUR
AD HERE**

Advertising Rates:

Business Card **\$200**

Triple Size **\$350**

Half Page **\$500**

Full Page **\$800**

