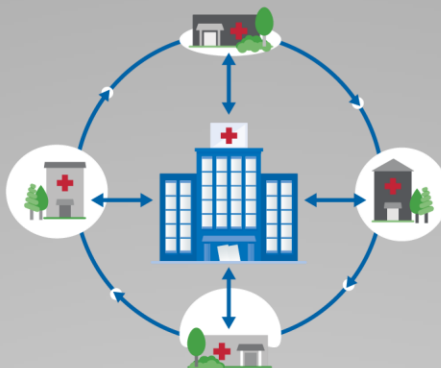


In the U.S. and around the world, people are not getting access to the specialty care they need, when they need it, for complex and treatable conditions.

Moving Knowledge, Not Patients

Through technology-enabled collaborative learning, ECHO creates access to high-quality specialty care in local communities.



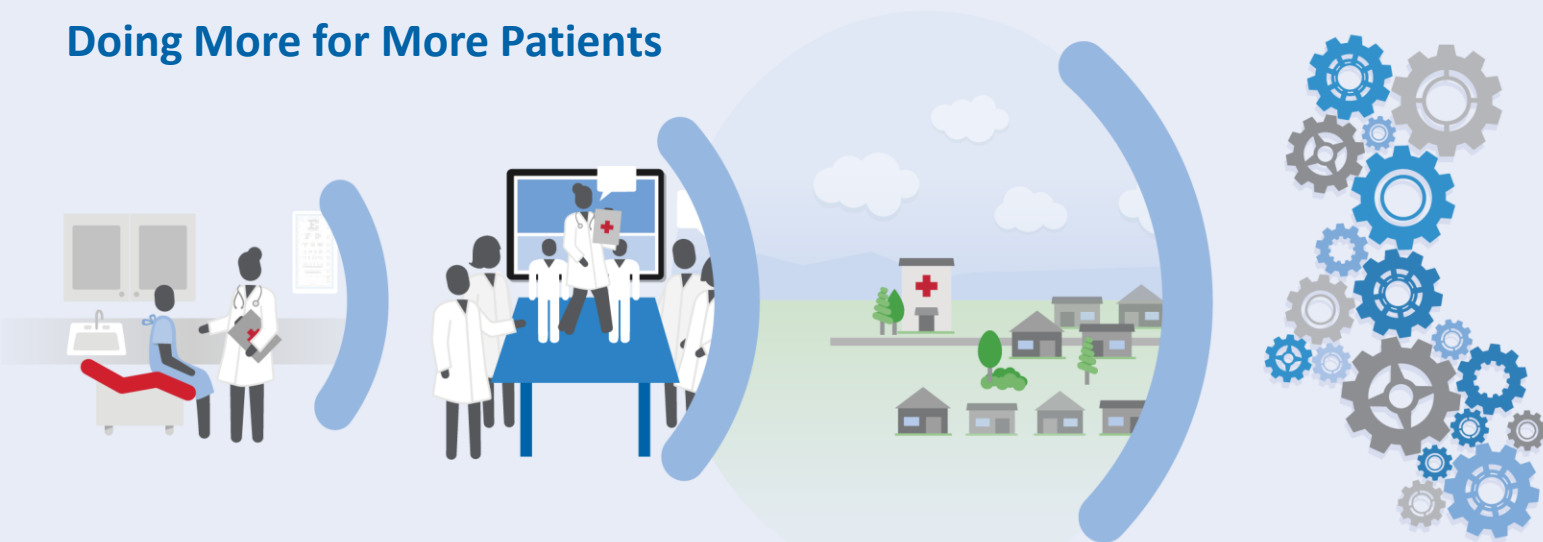
Hub and spoke knowledge-sharing networks create a learning loop:

Community providers (spokes) learn from specialists.

Community providers learn from each other.

Specialists (hub) learn from community providers as best practices emerge.

Doing More for More Patients



PATIENTS

- Right Care
- Right Place
- Right Time

PROVIDERS

- Acquire New Knowledge
- Treat More Patients
- Build Community of Practice

COMMUNITY

- Reduce Disparities
- Retain Providers
- Keep Patients Local

SYSTEM

- Increase Access
- Improve Quality
- Reduce Cost

Changing the World, Fast



NEW MEXICO

- More than 300 community clinic sites
- 77,000 CME credits provided for free via ECHO-operated clinics



NATIONAL

- Operating in 30 states and growing
- 45 complex conditions



GLOBAL

- Operating 86 hubs in more than 13 countries and growing
- Goal of touching 1 billion lives by 2025

Are you a part of the ECHO?

Contact us: chronicdiseaseadmin@mainehealth.org

At MaineHealth...

MaineHealth, in partnership with MMP Endocrinology and Diabetes Center, is launching an “Endo Project ECHO.”

****Currently seeking spoke sites****

Who?

- Hub site: MMP Endocrinology and Diabetes Center
- Spoke sites: Primary care providers and practices

What?

- Endo ECHO will focus on endocrinology and diabetes
- Each call will include a case review and a didactic component
- Didactic: Monthly curriculum will be provided to spokes prior to launch of the project
- Case Review: Spokes will submit cases prior to the call to be peer reviewed and discussed on the call

Where?

- Anywhere! The virtual model allows you to participate from your practice or any location that is convenient for you
- Call in as a group in a practice or individually from your phone/computer

When?

- Once a month, from 7:30 am – 8:30 am

Working Timeline

- April – June: Recruit spoke sites and gather input on curriculum topics
- July – August: Training, work out logistics
- September – October: Launch

Contact Us!

For more information and to sign up as a spoke site:

Joan Ingram, Diabetes Program Manager
(chronicdiseaseadmin@mainehealth.org or 662-1548)