

New Enhancements

POINT OF SALE TABLET

IN-PERSON PAYMENTS

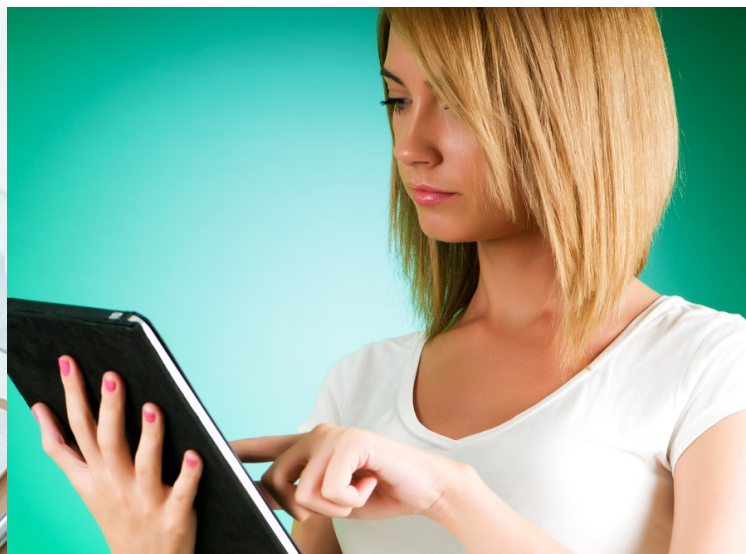
Anyone can make payments using the new POS Tablet. Payment methods include cash, check or credit/debit card and coming soon, Student Wallet.

EASY INTEGRATION

The new POS Apple Tablet integrates with existing systems that maintain student fees, lunch balances, library fines, childcare invoices, sporting events, registration, rec activities, continuing education and any department that needs to collect in-person credit card payments without an expensive POS terminal.

MOBILITY

For staff requiring mobility, POS Tablet works great for parent registration meetings and later taking payments for pool facilities or adult aerobics. POS Tablet is the ultimate solution for Athletic Directors making gate sales and then mingling with the crowd for fundraising spirit wear sales.



OVERVIEW

Schools today are accepting payments for a variety of school functions and by several different methods. While there is no “one size fits all” solution, e~Funds for Schools has developed an all-in-one, Point of Sale (POS) System that will accept a variety of payment types for a multitude of payment options.

Each POS System can be customized to each school’s individual needs. Whether offering the ability to pay for student fees, spirit wear, donations, or simply lunch payments, e~Funds for Schools can create a POS System that will best suit any school.

And now, because your school’s Apple tablets have wireless internet connection, your POS System can go anywhere at any time.

FOR MORE PRODUCT INFO OR A DEMO, PLEASE CONTACT:

Richard Waelti, VP of Sales - rwaelti@magicwrighter.com
Jeff Miller, National Account Representative - jmiller@magicwrighter.com
Elliott Jones, EFS Specialist - ejones@magicwrighter.com