

# CHECKING FOR UTILITIES!

## Gas Service Check From The Outside

*Every house will have at least water and electricity available but does it have natural gas service?*

Here is how to check if a house has natural gas service just by looking from the outside:

1. Is there a gas meter? Usually the meter is in the alley. If there is no alley, then the meter is to one side of the house, or in one front corner of the property.
2. Is there a riser? This is a gas pipe that comes from the ground and enters the side of the house. If there is one, check the valve. If it is positioned up and down, this usually means the gas service is on. If it is positioned side to side, this means it is in the closed (shut) position.
3. Are there gas flues sticking out of the roof top?  
All gas appliances such as water heaters, furnaces, fireplaces (not gas top ranges) have a vent flue that runs from the appliance, through the ceiling, into the attic finally through the roof.
4. You may also want to call Atmos Energy 888-286-6700. When you finally get an operator, give them the address and ask if there is gas service.

## Gas Appliances Present Inside?

1. Check if there is a gas range. Turn it on. Do the burners come on?
2. Locate the water heater. It is usually in the garage. If it is a gas water heater, it will have a flue, gas line and gas valve.
3. Fire place. Look inside the fire box. Is there a gas line sitting at the bottom?
4. Locate the furnace. Sometimes it is in a utility closet in a hallway. A gas furnace will have a gas line and flue immediately visible.

## Gas Service Check From The Inside

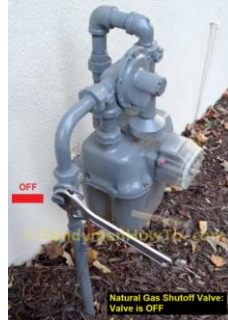
1. On the gas water heater, feel the water lines coming in (if you can reach them). The water line with the shut-off valve is the incoming cold water line. The other will be the hot water supply line. This line will feel very warm.
2. Open a faucet for hot water. Is there hot water?

## Water And Electricity Service Inside (you can check the water meter for pad locks if you can)

1. Open faucets and let the water run for at least 15 seconds. Flip the light switches.



Gas flues on roof top and gas meter



Gas meter valve off



Gas riser valve open



Gas flue



Yellow gas line and gas valve



Fireplace gas pipe