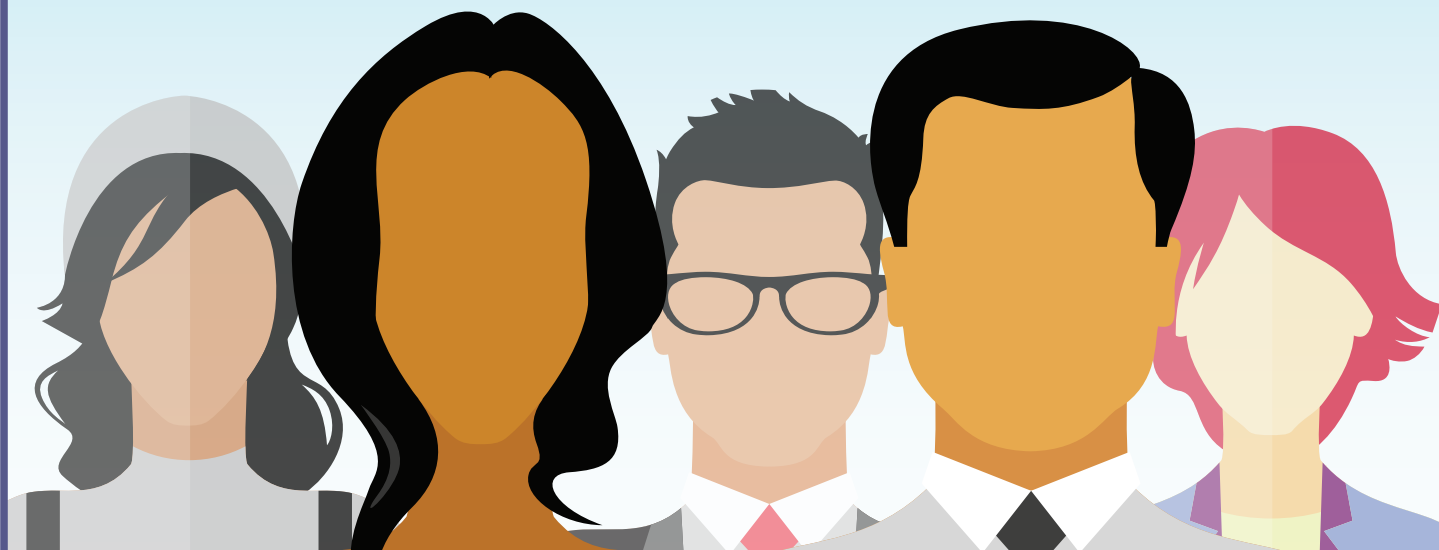




Better Healthcare,  
Realized.

# IPRO ESRD Network of New England Patient Advisory Committee (PAC) Face-to-Face Summit



IPRO ESRD Network of New England invites one patient representative from each dialysis facility to attend the annual Patient Advisory Committee (PAC) face-to-face summit. This summit is a fun opportunity to meet and collaborate in person with peers. Brunch will be provided.

**Date and time:** Sunday, September 30, 2018 from 11:00 am to 2:00 pm

**Location:** Southbridge Hotel and Conference Center  
14 Mechanic Street, Southbridge, MA 01550

## For more information contact:

**Brittney Jackson, LMSW, MBA**

Patient Services Director

(203)-285-1213

[bjackson@nw1.esrd.net](mailto:bjackson@nw1.esrd.net)

or

**Merari Rosario, MHA**

Community Outreach Coordinator

(203)-285-1223

[mrosario@nw1.esrd.net](mailto:mrosario@nw1.esrd.net)

For registration information please visit the Network website,

<http://network1.esrd.ipro.org/events>



## To file a grievance, please contact us:

IPRO End-Stage Renal Disease Network of New England

1952 Whitney Avenue, 2nd Floor, Hamden, CT 06517

Patient Toll-free: (866) 286-3773 (Patients only) • Main: (203) 387-9332

Fax: (203) 389-9902 • E-mail: [info@nw1.esrd.net](mailto:info@nw1.esrd.net)

Web: <http://network1.esrd.ipro.org>