

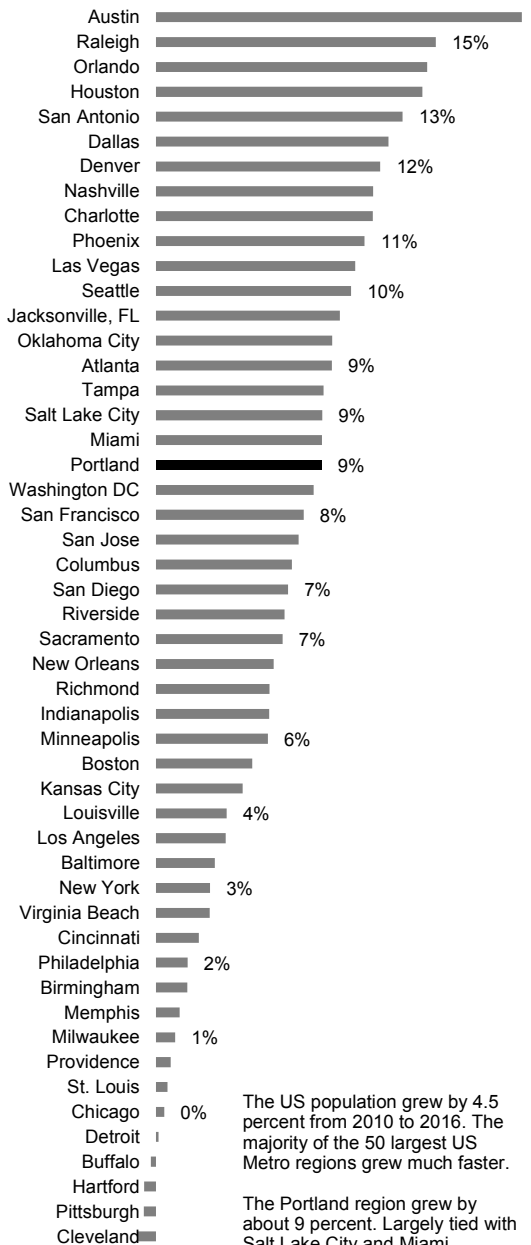
**March
2017**

City of Portland *Economic* INDICATORS

State of Oregon
Employment Department
QUALITYINFO.ORG

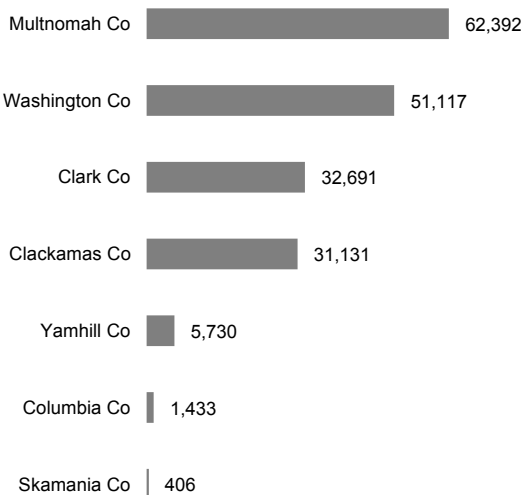
Population Growth by Metro Region

2010 to 2016



Population Growth by County

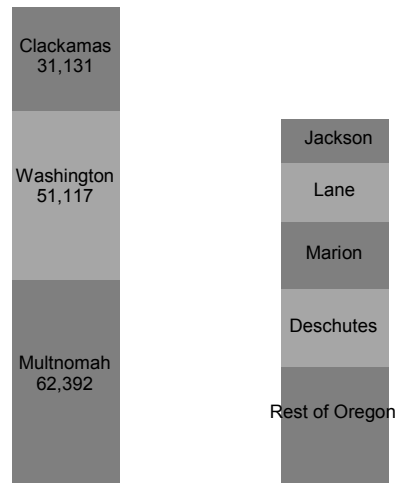
2010 to 2016 Portland Metro Region



The Portland metro region added 192,412 people over the last six years. The vast majority of that growth was in Multnomah, Washington, Clackamas and Clark counties.

Population Growth by Oregon County

2010 to 2016

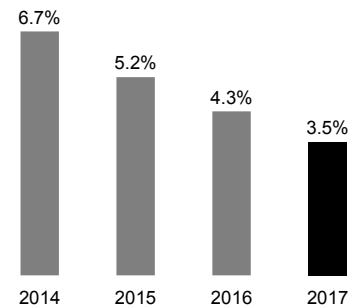


Most of the population growth in Oregon was in the Portland area. The majority of growth in the rest of Oregon was in just 4 counties: Deschutes, Marion, Lane and Jackson.

EMPLOYMENT TRENDS

February Unemployment Rate

Portland Metro - Seasonally adjusted



Employment Growth

Portland Metro

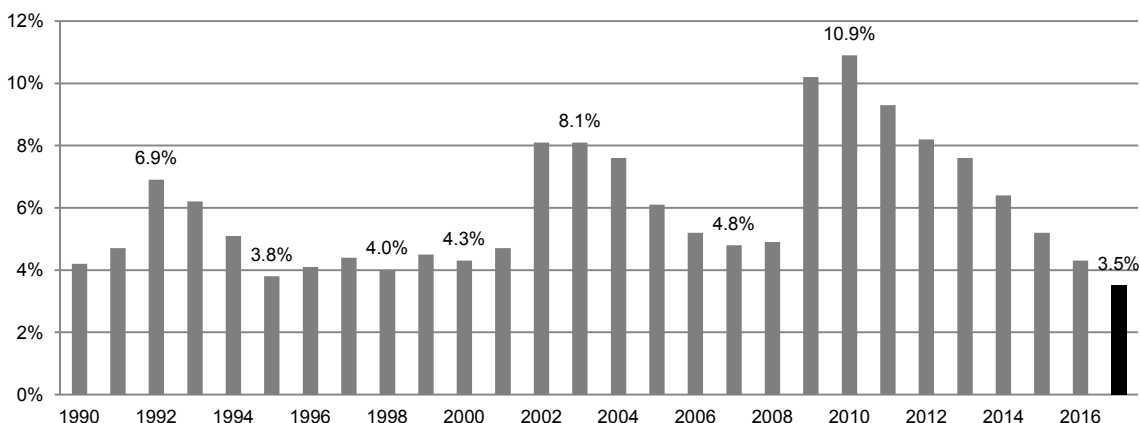
Feb 2017 **1,149,700**
Growth +21,600 (+1.9%)
Year-over-year

Industry Growth

Portland Metro - February
Year-over-year growth (percentage)

Construction	+5,700 (+9.8%)
Financial Activities	+3,800 (+5.7%)
Information	+1,200 (+4.9%)
Healthcare & Social Assistance	+4,800 (+3.5%)
Transportation & Warehousing	+1,200 (+3.4%)
Leisure & Hospitality	+2,100 (+1.8%)
Professional & Business Services	+2,500 (+1.4%)
Manufacturing	- 3,100 (-2.5%)

Unemployment Rate - Portland Metro 1990 to 2017 - January



**Want to join the distribution list?
Have questions? E-mail me!**

Christian Kaylor
Christian.R.Kaylor@oregon.gov