



Release Announcement

SpeechMike Premium series firmware update for new button modes

SpeechMike Premium	LFH3500/3600 series (FW2.60)
--------------------	------------------------------

SpeechMike Premium Touch	SMP3700/3800 series (FW3.50)
--------------------------	------------------------------

SpeechMike Premium Air	SMP4000 series (FW4.50)
------------------------	-------------------------

SpeechControl for Windows 4.1

SpeechControl for Mac 3.4

Wolfgang Spannlang

August 2018

SPEECH
PROCESSING
SOLUTIONS

Table of contents

HIGHLIGHTS	7
NEW FIRMWARE VERSIONS	7
HIGHLY COMPATIBLE - 3 NEW CUSTOM BUTTON MODES	7
PLUG AND PLAY	8
EASY BUTTON MODE SWITCHING	8
FUTURE PROOF – BROWSER MODE FOR SMP3700/3800 SERIES	9
SPEECHMIKE 2 OPERATION MODE FOR SMP3700/3800 SERIES	9
ENHANCED SUPPORT FOR MAC ENVIRONMENTS	9
OTHER ENHANCEMENTS FOR THE SPEECHMIKE PREMIUM AIR FIRMWARE	10
EASY CUSTOMIZATION WITH NEW SPEECHCONTROL SOFTWARE VERSIONS	11
UPDATED QUICK START GUIDES AND USER MANUALS	13
NEW DEDICATED LINKS TO SUPPORT PAGES	13
NEW FIRMWARE DETAILS	14
THE BUTTON MODES	14
<i>SpeechMike event mode</i>	14
<i>Keyboard mode (for Windows only)</i>	14
<i>Browser mode (Not for LFH3500/3600 series)</i>	14
<i>Custom modes 1-3</i>	15
<i>Button modes overview</i>	15
<i>Switching the button modes on the SpeechMike</i>	16
<i>Graphic overview of default button configurations in Keyboard mode and Custom modes</i>	17
<i>List of default button configurations in diverse button modes</i>	29
<i>Using a SpeechMike with Mac dictation</i>	33
THE RECORD LED CHALLENGE	36
<i>The challenge</i>	36
<i>The solution</i>	36
SPEECHMIKE 2 OPERATION MODE FOR SMP3700/3800 SERIES	40
<i>How to switch to/from SpeechMike 2 Operation mode</i>	41
HOW TO UPGRADE SPEECHMIKE FIRMWARE WITH SPEECHCONTROL	42
GET THE FIRMWARE	42
RUN THE FIRMWARE UPGRADE	43
SPEECHMIKE FEATURE LIST AND FEATURE COMPARISON LIST	45
AVAILABILITY	48
SPEECHMIKE FIRMWARE DOWNLOADS	48
SPEECHCONTROL SOFTWARE DOWNLOADS	48
PACKAGED PRODUCTS WITH NEW FIRMWARE	48
ACRONYMS AND ABBREVIATIONS	49

Dear Speech Processing Solutions partner,

In 2014 the Philips SpeechMike was the first dictation microphone that introduced a **keyboard mode** to support environments where no additional software installation was possible or required.

With this release, we now further enhance the opportunities by providing up to 6 different preconfigured button modes on the SpeechMike Premium series for Windows, Mac and web based applications.

The new firmware versions will provide an intuitive method to switch between the diverse button modes and for some special use cases, it will also be possible to send hot keys and to control the microphone with a single button click.

In addition the new firmware even allows users to send hot keys when a SpeechMike button is pressed and when it is released (e.g. for programming push-to-talk mode).

To increase the backwards compatibility for legacy integrations the SpeechMike Premium Touch SMP3700/3800 series will also include the SpeechMike 2 operation mode.

On top of that, both **SpeechControl for Windows** as well as the **SpeechControl for Mac** software now provide even more enhanced configuration options to support the new button modes.

For all SpeechMike Premium devices, we will also provide updated Quick Start Guides and User manuals describing the options with the enhanced SpeechMike Premium firmware.

All in all the new firmware versions make the SpeechMike Premium series fit for the future providing great opportunities to continue the successful SpeechMike story on a long term.

Please find below the highlights of the new firmware and software releases.

With kind regards,

Wolfgang Spannlang

Senior Product Manager
Speech Processing Solutions



HIGHLIGHTS

NEW FIRMWARE VERSIONS



With the new firmware versions, we can provide the **new custom button modes** to our customers.

After updating their firmware, they will be able to benefit from the new options, providing a new flexibility for tailoring the SpeechMike buttons in diverse IT environments.

For the SpeechMike Premium Air the new firmware will also include some small improvements with regards to LED indicators based on customer requests.

The new functions will be provided from following firmware versions onwards:

- SpeechMike **Premium** LFH 3500/3600 series: FW 2.60
- SpeechMike **Premium Touch** SMP 3700/3800 series: FW 3.50
- SpeechMike **Premium Air** SMP 4000 series: FW 4.50

HIGHLY COMPATIBLE - 3 NEW CUSTOM BUTTON MODES



With the three new Custom button modes, the SpeechMikes can be used in all potential environments **without** the need for **integration** or **driver software installation**.

The new Custom button modes enable users to control their dictation and speech recognition application with the SpeechMike by assigning **hotkeys** to the programmable SpeechMike buttons according to their individual needs.

For example: for convenient and efficient utilization of speech recognition software you would program the record button to start and stop recording and for editing you would program the Rewind button to mark the recognized text backwards.

In addition to the keyboard mode the new custom button modes also enable to control the SpeechMike microphone + Record LED + the recording application with a single button click – see also The Record LED challenge

On top of that, users can define to send hotkeys when a button is pressed **and** when it is released. This enables to even program functions like **push-to-talk** to the SpeechMike buttons.

The new Custom button modes enable customers to use the SpeechMikes on **Zero-clients** where no driver installation is possible and where the SpeechMike microphone and Record LED has to be controlled via the SpeechMike.

Benefits

- No integration required
- Flexible button programming of audio, application and text navigation commands
- Compatible with most IT environments without driver software installation

PLUG AND PLAY



The new Custom button modes contain **3 new preprogrammed button configurations** enabling plug-and-play functionality for the most common speech recognition applications out-of-the-box:

SpeechMike button mode	Prepared for
Custom 1 mode	Windows speech recognition (for Windows OS only)
Custom 2 mode	Dragon Dictate speech recognition (for Mac OS only)
Custom 3 mode	Dragon speech recognition (for Windows OS only)

Users can reprogram the buttons with the updated SpeechControl software versions for Windows and Mac. This enables them to tailor the button commands according to their individual needs for any preferred speech recognition and recording application.

Notes:

- The Custom modes 1 and 3 can only be reconfigured in Windows environments with SpeechControl for Windows 4.1
- The Custom 2 mode can only be reconfigured in Mac environments with SpeechControl for Mac 3.4

EASY BUTTON MODE SWITCHING



The SpeechMike Premium series now includes up to 6 different button modes.

Therefore, it was required to provide an easy and intuitive option to switch between the button modes.

This could be realized by providing a simple two-step approach:

1. Initialize the button switch operation by pressing EOL and INS/OVR simultaneously for 3 seconds (familiar method)

The LEDs that are close to the buttons will start flashing yellow

2. Select the appropriate button that represents the intended button mode

The LED of the selected button will briefly light up.

Button assignments

SpeechMike button	Button mode
F1	SpeechMike event mode
F2	Keyboard mode
F3	Browser mode
F4	Custom 1 mode (Windows speech recognition)
EOL	Custom 2 mode (Dragon Dictate for Mac)
INS/OVR	Custom 3 mode (Dragon for Windows)

3. To check the selected button mode briefly press EOL and INS/OVR.

The LED of the corresponding button mode will light up in yellow.

Note: more information about the button modes is also available in the updated user manuals.

Back to [Table of contents](#)

FUTURE PROOF – BROWSER MODE FOR SMP3700/3800 SERIES



With the new firmware, the **Browser mode** can now also be used with the SpeechMike Premium Touch (SMP3700/3800 series).

This will enable users to utilize their SpeechMike Premium Touch as well as the SpeechMike Premium Air in web-based recorders and speech recognition applications with no need for installing any SpeechMike drivers on the client PC.

More information about the Browser mode can be found in this document below.

Note: The **SpeechMike Premium LFH3500/3600** firmware update **does not include** the **browser mode**, but users can reprogram the new **Custom modes** to control browser based recording applications via hotkeys.

SPEECHMIKE 2 OPERATION MODE FOR SMP3700/3800 SERIES



We have got some few requests to enable the **legacy SpeechMike 2 operation mode** also in the **SpeechMike Premium Touch** SMP3700/3800 series.

This shall enable customers to use these devices in environments where no upgrade to the latest SpeechMike drivers and extensions has been done within the last 7 years.

We have learned that this sometimes happens, if system administrators do not want to change their running system to avoid any glitches in their working environment.

More information on how to switch to the SpeechMike 2 operation mode can be found below in this document.

Note: Due to technical reasons the **SpeechMike 2 operation mode** is **not available** in the **SpeechMike Premium Air** SMP4000 series.

ENHANCED SUPPORT FOR MAC ENVIRONMENTS



With the Custom 2 mode the SpeechMike Premium series now includes preprogrammed commands for **Dragon Dictate** for Mac speech recognition software.

With the new **SpeechControl** for **Mac** version **3.4** software, the Custom 2 mode can now also be reprogrammed to support the native **Mac Dictation** speech recognition.

Note: **Mac Dictation** requires more sophisticated configuration on the Mac. However it is possible to reuse the Custom 2 mode hotkeys also for Mac Dictation. More information on how to configure Mac Dictation to utilize the Custom 2 mode can be found below.

Back to [Table of contents](#)

OTHER ENHANCEMENTS FOR THE SPEECHMIKE PREMIUM AIR FIRMWARE



Based on customer feedback the SpeechMike Premium Air firmware version 4.50 includes the following additional enhancements:

- We disable all (automatic) beeps (also the wakeup beep) if the 'Enable acoustical warnings' setting is disabled.
Description: The wakeup beep is always heard at reconnect e.g. when picking up the SpeechMike in idle mode. This was perceived as annoying by the users, especially because they have intentionally switched off all beeps with SpeechControl.
- The connection LEDs no longer flash if the wireless connection is active, but the USB connection is interrupted.
Description: In earlier firmware versions the Connection LEDs flashed e.g. if the computer went into standby mode.
The flashing LEDs were perceived as an annoying indication.
Therefore we have removed the flashing indication and we have also changed the LED color from red to yellow.

Connection LED 		
SpeechMike	Docking station	Meaning
		wireless connection OK but no USB connection

- **Removed low voltage vibration warning** in SMPA.
Description: In earlier firmware versions, the SpeechMike Premium Air sent a vibration warning, if the battery voltage fell under a certain threshold level.
Some users thought that this was a wireless connection problem.
To avoid this misunderstanding we have removed the low voltage vibration alarm from firmware 4.50 onwards.
The battery/charging LED indication remains unchanged.
- **Improved charging behavior for empty rechargeable batteries**
Description: With the new firmware the SpeechMike Premium Air wireless charging electronic can better cope with empty rechargeable batteries. To prevent the battery from damage the charging electronic will start with a 'trickle charging' mode for about 45 minutes, which is displayed by a flashing orange battery/charging LED on the device.
If the battery has reached a certain voltage, the standard charging method is applied.
To fully charge an empty battery via the docking station, we recommend running the charging process for approximately 6 hours in total.
Note: If the rechargeable battery is almost empty, the connection to SpeechControl is interrupted on the software side for security reasons.

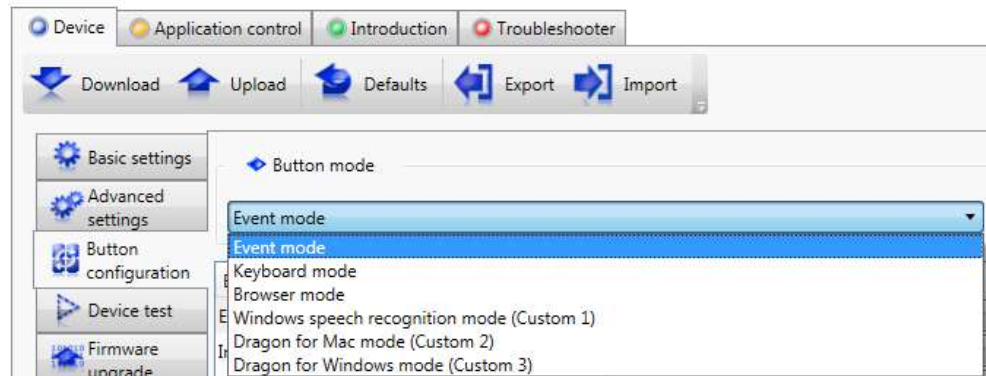
EASY CUSTOMIZATION WITH NEW SPEECHCONTROL SOFTWARE VERSIONS



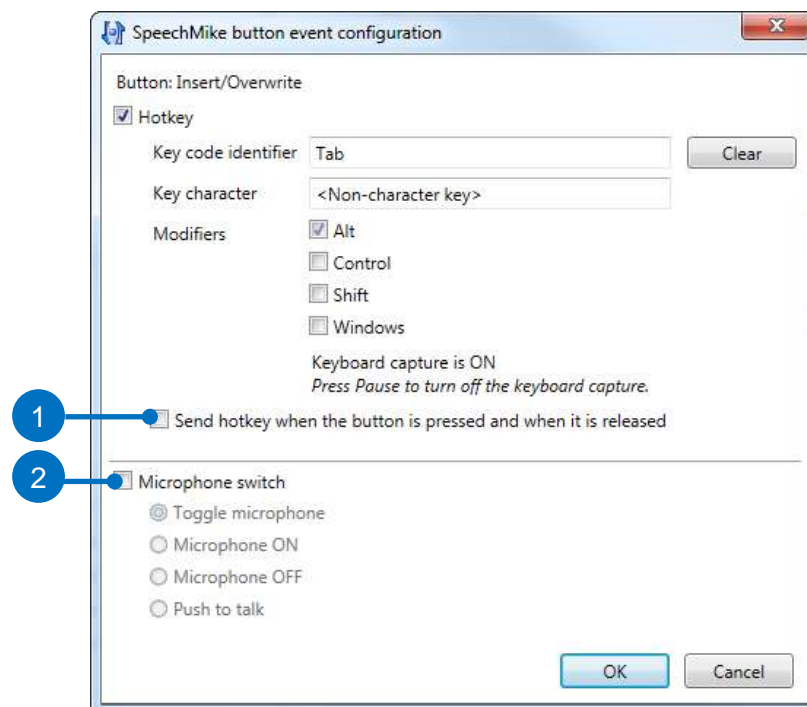
SpeechControl for Windows 4.1

The new version additionally supports to load and configure all new Windows-based button modes and the configuration of the browser mode for the SMP3700/3800 series.

The button modes can be selected from Device > Button configuration > Button mode



The new Custom1 and Custom 3 modes include the following hotkey configuration enhancements compared to the keyboard mode:



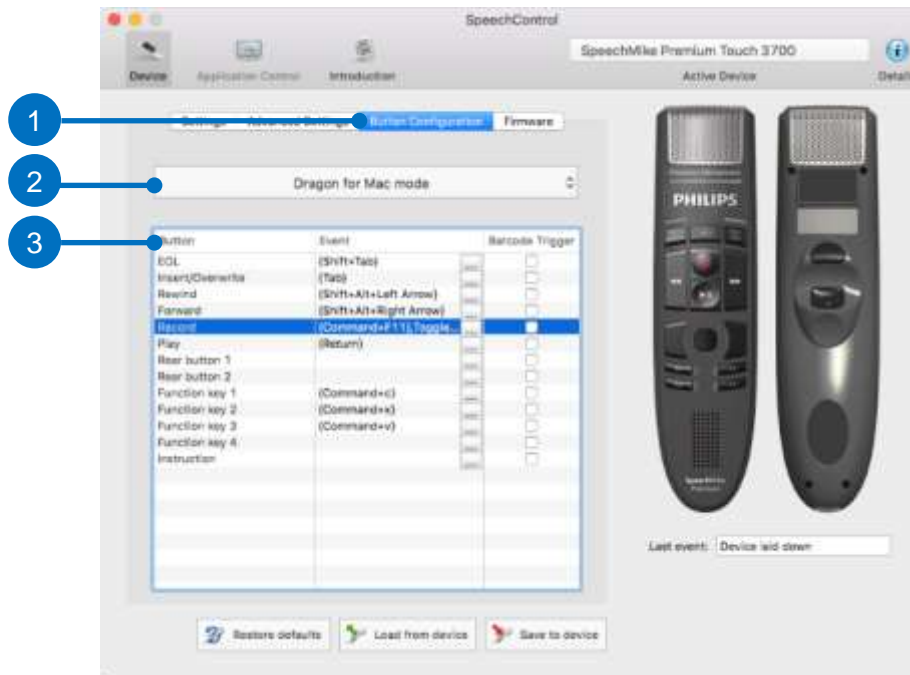
1. The SpeechMike can send a hotkey when a button is pressed and when it is released. For example this is required if a 'Push-to-talk' function shall be realized.
2. The SpeechMike microphone can be controlled while sending a hotkey. This option is required if the recording application does not close the Audio channel for recording. More information about this function can be found in the chapter 'The Record LED challenge'



SpeechControl for Mac 3.4

From this version onwards, it is now possible to also configure Mac specific keyboard shortcuts to the SpeechMike buttons.

The app contains the new 'Button configuration' tab (1) which includes a Drop down list for the button modes (2) and the Button configuration overview (3)



Users can load all different modes to the device.



However configuration on a Mac is limited to the following modes:

- Event mode
- Browser mode
- Dragon for Mac mode (Custom 2)

The new **Custom 2** mode that is pre-programmed with hotkeys for **Dragon Dictate** for **Mac**.

For the utilization of **Mac Dictation**, users are able to configure their SpeechMike buttons accordingly. More information on how to do that can be found below in the chapter: [Using a SpeechMike with Mac dictation.](#)

UPDATED QUICK START GUIDES AND USER MANUALS



To document the latest firmware improvements we have updated the SpeechMike Premium Quick Start Guides and user manuals.

They can be downloaded from the corresponding SpeechMike Premium support pages as described below.

NEW DEDICATED LINKS TO SUPPORT PAGES



To enable an easier access to the latest SpeechMike Premium manuals, SpeechMike firmware and SpeechControl software we have introduced three new dedicated links to the SpeechMike Premium support pages:

SpeechMike Premium LFH3500/3600 series:

www.speechmike.com/premium/support

SpeechMike Premium Touch SMP3700/3800 series:

www.speechmike.com/premium-touch/support

SpeechMike Premium Air SMP4000 series:

www.speechmike.com/premium-air/support

SpeechControl software

www.dictation.philips.com/speechcontrol

These new links will also be used in the new SpeechMike Premium Quick Start Guides and user manuals.

Back to [Table of contents](#)

NEW FIRMWARE DETAILS

THE BUTTON MODES

The new SpeechMike Premium series firmware versions provide up to six different button modes:

- **SpeechMike event mode** (default)
- Keyboard mode: Dragon speech recognition – 2-step control (for Windows operating systems only)
- Browser mode (not for LFH3500/3600 series)
- Custom 1 mode: Windows speech recognition (for Windows operating systems only)
- Custom 2 mode: Dragon Dictate speech recognition (for Mac operating systems only)
- Custom 3 mode: Dragon speech recognition (for Windows operating systems only)

SPEECHMIKE EVENT MODE

The SpeechMike event mode is the **default button mode** with which all SpeechMikes are supplied.

All SpeechMikes that have ever been produced use this mode in integrated solutions like SpeechExec, Winscribe, BigHand and many other dictation or speech recognition applications.

The **Event mode** requires that the **SpeechMike** is **integrated** in the recording application. In virtual environments it also requires the installation of driver software (VDI extensions) on clients and servers

KEYBOARD MODE (FOR WINDOWS ONLY)

The keyboard mode allows controlling recording applications with hotkeys that can be programmed to the SpeechMike buttons. It is preconfigured to control Dragon NaturallySpeaking with keyboard shortcuts, but with a 2-step approach to start a dictation.

This mode is also called the 'Secure Dragon mode', because it requires the least CPU resources on the PC when switching between record and stop and it reacts most agile to the button control.

For backwards compatibility reasons we kept the keyboard mode as is.

BROWSER MODE (NOT FOR LFH3500/3600 SERIES)

This mode is **new** to the **SpeechMike Premium Touch SMP3700/3800 series**.

In this mode the SpeechMike Premium sends **joystick events** to the PC to which the web-based application running in a browser reacts accordingly.

Besides keyboard shortcuts, joystick events are the only events that can be used in these environments.

The big advantage of this mode is that **no SpeechMike drivers** need to be **installed** on the client computer.

To provide maximum flexibility the Browser mode can also provide a mixture of hotkeys and joystick events. For example: an integrated browser client 'understands' the joystick events for record, playback, rewind, etc., but the user also wants to delete backwards by words, which would e.g. be the <Shift+Backspace> hotkey.

In the Browser mode it is also possible to program a button with the internal microphone on/off function in addition to a Joystick event or to a hotkey if the USB audio stream for the microphone has to be kept open. More information about the advantages of this feature can be found in the chapter: The Record LED challenge

Switching the SpeechMike to the Browser mode can be done with a hotkey on the device, or via the SpeechControl software.

SpeechControl can also be used to program the SpeechMike buttons according to individual needs.

IMPORTANT: In Browser mode the SpeechMike uses different USB identifiers than in all other button modes. Web-based applications will require a new 'integration' where the web-based application simply has to react on the Joystick events coming from the SpeechMike.

Back to [Table of contents](#)

CUSTOM MODES 1-3

The new Custom modes are perfect for controlling applications in browser environments, zero clients or where no SpeechMike integration has been done.

Compared to the keyboard mode the Custom modes additionally allow sending a hot key to the recording application and control the microphone + the Record LED and with a single button click.

More information about the advantages of this option can be found in the chapter: The Record LED challenge

Additionally the Custom modes enable to send hotkeys at 'button pressed' and 'button released' events, which allows to realize **push-to-talk** dictation or similar functions even when no SpeechMike integration has been done.

Equal to the keyboard mode the custom modes do not require any driver software installation.

The custom modes come with three preprogrammed configurations:

- Custom 1 mode: Windows speech recognition (for Windows operating systems only)
- Custom 2 mode: Dragon Dictate speech recognition (for Mac operating systems only)
- Custom 3 mode: Dragon speech recognition (for Windows operating systems only)

This allows users to work with the corresponding applications out-of-the-box without installing any drivers or configuration software.

More information on default button assignments can be found below.

BUTTON MODES OVERVIEW

Below you can find an overview about the available button modes in diverse SpeechMike editions

	Event mode	Keyboard mode*	Browser mode	Custom 1* Windows speech recognition	Custom 2** Dragon for Mac	Custom 3* Dragon for Windows
SpeechMike III LFH3200/3300 series	●	-	-	-	-	-
SpeechMike Premium LFH3500/3600 series	●	●	-	FW2.60	FW2.60	FW2.60
SpeechMike Premium Touch SMP3700/3800 series	●	●	FW3.50	FW3.50	FW3.50	FW3.50
SpeechMike Premium Air SMP4000 series	●	●	●	FW4.50	FW4.50	FW4.50

● ... Already available in earlier firmware versions

*... SpeechControl configuration option available in Windows operating systems only

**... SpeechControl configuration option available in Mac operating systems only

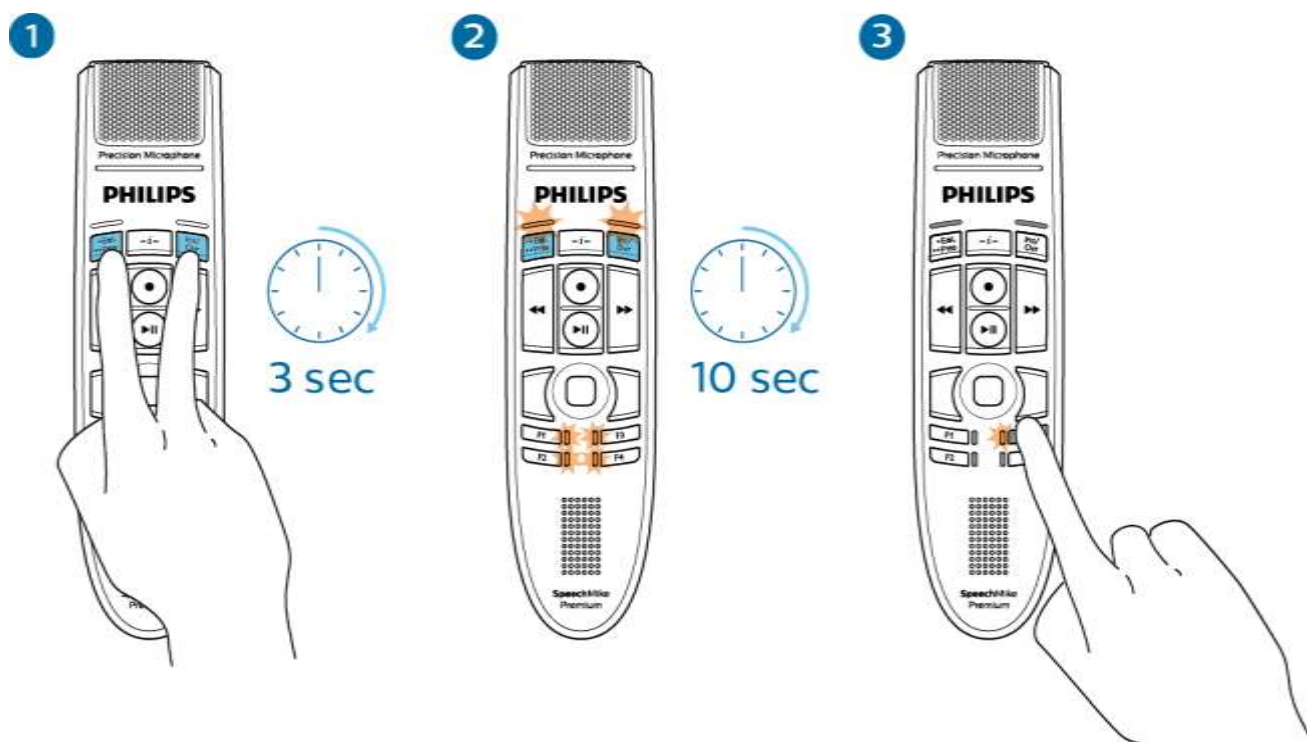
Back to [Table of contents](#)

SWITCHING THE BUTTON MODES ON THE SPEECHMIKE

Users can easily switch the button modes on the SpeechMike without the need of any software.

The example below explains how to switch to the Browser mode.

1. Press **EOL** and **INS/OVR** simultaneously for **3 seconds**.
2. All corresponding LEDs will start flashing.
You can now change the SpeechMike button mode for 10 seconds.
3. Click on **F3** to switch your SpeechMike to **Browser mode**.
The corresponding LED will light up to confirm the new button mode setting.



To switch to a different mode simply press the appropriate key while the LEDs are flashing according to the table below:

Button mode (prepared for)	Key
Event mode ¹	F1
Keyboard mode* (Dragon for Windows, 2-step control)	F2
Browser mode ²	F3
Custom 1 mode* (Windows speech recognition)	F4
Custom 2 mode ** (Dragon for Mac)	EOL/Prio
Custom 3 mode* (Dragon for Windows)	INS/OVR

¹... factory default setting

²... not in SpeechMike Premium LFH3500/3600 series

*... Windows operating systems only

**...Mac operating systems only

Back to [Table of contents](#)

GRAPHIC OVERVIEW OF DEFAULT BUTTON CONFIGURATIONS IN KEYBOARD MODE AND CUSTOM MODES

Button devices

SpeechMike Premium / SpeechMike Premium Air

LFH3500/3600, SMP3700/3800/4000

Keyboard mode

Button settings for Dragon speech recognition

The SpeechMike Premium models can easily be used with Dragon speech recognition via Plug & Play.
No additional software is required.

The buttons of your SpeechMike Premium are preconfigured with the following settings and commands.

Press the EOL/Prio and the Ins/Ovr button until all LEDs will light up in orange.
After that click F2 to activate the Keyboard mode.



	Command	Shortcut
REC	SpeechMike Mic ON/OFF	Toggle microphone
EOL/Prio	Tab backwards (e.g. email)	[Shift+Tab]
FRWD	Mark words backwards	[Ctrl+Shift+Left]
Play		
LM	Left mouse	
F1	Show dictation box	[Ctrl+Shift+D]
F2	Transfer text	[Ctrl+Shift+T]
-i-	Dragon Mic ON/OFF	[NumKey +]
Ins/Ovr	Tab forwards	[Tab]
FFWD	Next Field (Dragon)	[Ctrl+Shift+N]
RM	Right Mouse	-
TP	Cursor control + Left mouse	
F3		
F4	Switch to hidden mode	[Ctrl+Shift+H]

SpeechMike Premium / SpeechMike Premium Air

LFH3500/3600, SMP3700/3800/4000

Custom 1 mode: Windows speech recognition**Button settings for Windows speech recognition**

The SpeechMike Premium models can easily be used with Windows speech recognition via Plug & Play.
No additional software is required.

The buttons of your SpeechMike Premium are preconfigured with the following settings and commands.

Press the EOL/Prio and the Ins/Ovr button until all LEDs will light up in orange.
After that click F4 to activate the Custom 1 mode.



Command	Shortcut
REC	Windows Mic ON/OFF [Ctrl+Windows]
Eol/Prio	Previous field (e.g. email) [Shift+Tab]
FRWD	Mark words backwards [Ctrl+Shift+Left]
Play	
LM	Left mouse
F1	Copy [Ctrl+C]
F2	Cut [Ctrl+X]
Ins/Ovr	Next field (e.g. email) [Tab]
FFWD	Mark words forward [Ctrl+Shift+Right]
RM	Right Mouse
TP	Cursor control + Left mouse
F3	Paste [Ctrl+V]
F4	

SpeechMike Premium / SpeechMike Premium Air

LFH3500/3600, SMP3700/3800/4000

Custom 2 mode: Dragon for Mac**Button settings for Dragon for Mac speech recognition**

The SpeechMike Premium models can easily be used with Dragon for Mac speech recognition via Plug & Play.

No additional software is required.

The buttons of your SpeechMike Premium are preconfigured with the following settings and commands.

Press the EOL/Prio and the Ins/Ovr button until all LEDs will light up in orange.
After that click EOL/Prio to activate the Custom 2 mode.



Command	Shortcut
REC Dragon Mic ON/OFF	[36+F11]
Eol/Prio Previous field (e.g. email)	[Shift+Tab]
FRWD Mark words backwards	[Alt+Shift+Left]
Play	
LM Left mouse	
F1 Copy	[36+C]
F2 Cut	[36+X]
Ins/Ovr Next field (e.g. email)	[Tab]
FFWD Mark words forward	[Alt+Shift+Right]
RM Right Mouse	
TP Cursor control + Left mouse	
F3 Paste	[36+V]
F4	

Slider devices with 'International' switch style

SpeechMike Premium / SpeechMike Premium Air

LFH3510/3610, SMP3710/3810/4010

Keyboard mode**Button settings for Dragon speech recognition**

The SpeechMike Premium models can easily be used with Dragon speech recognition via Plug & Play.

No additional software is required.

The buttons of your SpeechMike Premium are preconfigured with the following settings and commands.

Press the EOL/Prio and the Ins/Ovr button until all LEDs will light up in orange.
After that click F2 to activate the Keyboard mode.



Command	Shortcut
REC	SpeechMike Mic ON [Microphone ON]
STOP	SpeechMike Mic OFF [Microphone OFF]
EoL/Prio	Tab backwards (e.g. email) [Shift+Tab]
Ins/Ovr	Tab forwards [Tab]
PLAY	
FRWD	
-i-	Dragon Mic ON/OFF [NumKey +]
FFWD	Next Field (Dragon) [Ctrl+Shift+N]
LM	Left mouse
RM	Right Mouse
F1	Show dictation box [Ctrl+Shift+D]
TP	Cursor control + Left mouse
F2	Transfer text [Ctrl+Shift+T]
F3	
F4	Switch to hidden mode [Ctrl+Shift+H]

SpeechMike Premium / SpeechMike Premium Air

LFH3510/3610, SMP3710/3810/4010

Custom 1 mode: Windows speech recognition

Button settings for Windows speech recognition

The SpeechMike Premium models can easily be used with Windows speech recognition via Plug & Play. No additional software is required.

The buttons of your SpeechMike Premium are preconfigured with the following settings and commands.

Press the EOL/Prio and the Ins/Ovr button until all LEDs will light up in orange.
After that click F4 to activate the Custom 1 mode.



Command	Shortcut
REC	Windows Mic ON/OFF [Ctrl+Win]
EoL/Prio	Previous field (e.g. email) [Shift+Tab]
PLAY	
-i-	
LM	Left mouse
F1	Copy [Ctrl+C]
F2	Cut [Ctrl+X]
STOP	
Ins/Ovr	Next field (e.g. email) [Tab]
FRWD	Mark words backwards [Ctrl+Shift+Left]
FFWD	Mark words forwards [Ctrl+Shift+Right]
RM	Right Mouse
TP	Cursor control + Left mouse
F3	Paste [Ctrl+V]
F4	

SpeechMike Premium Air

SpeechMike Premium / SpeechMike Premium Air

LFH3510/3610, SMP3710/3810/4010

Custom 2 mode: Dragon for Mac**Button settings for Dragon for Mac speech recognition**

The SpeechMike Premium models can easily be used with Dragon for Mac speech recognition via Plug & Play.

No additional software is required.

The buttons of your SpeechMike Premium are preconfigured with the following settings and commands.

Press the EOL/Prio and the Ins/Ovr button until all LEDs will light up in orange.
After that click EOL/Prio to activate the Custom 2 mode.



Command	Shortcut	Command	Shortcut
REC	Dragon Mic ON/OFF [⌘+F11]	STOP	
EOL/Prio	Previous field (e.g. email) [Shift+Tab]	Ins/Ovr	Next field (e.g. email) [Tab]
PLAY		FRWD	Mark words backwards [Alt+Shift+Left]
-i-		FFWD	Mark words forwards [Alt+Shift+Right]
LM	Left mouse	RM	Right Mouse
F1	Copy [⌘+C]	TP	Cursor control + Left mouse
F2	Cut [⌘+X]	F3	Paste [⌘+V]
		F4	

SpeechMike Premium / SpeechMike Premium Air

LFH3510/3610, SMP3710/3810/4010

Custom 3 mode: Dragon for Windows

Button settings for Dragon for Windows speech recognition

The SpeechMike Premium models can easily be used with Dragon speech recognition via Plug & Play.

No additional software is required.

The buttons of your SpeechMike Premium are preconfigured with the following settings and commands.

Press the EOL/Prio and the Ins/Ovr button until all LEDs will light up in orange.
After that click Ins/Ovr to activate the Custom 3 mode.



Command	Shortcut
REC	Dragon Mic ON/OFF [NumKey +]
EOL/Prio	Tab backwards [Shift+Tab]
PLAY	
-i-	
LM	Left mouse
F1	Show dictation box [Ctrl+Shift+D]
F2	Transfer text [Ctrl+Shift+T]
STOP	
Ins/Ovr	Tab forwards [Tab]
FRWD	
FFWD	Next Field (Dragon) [Ctrl+Shift+N]
RM	Right Mouse
TP	Cursor control + Left mouse
F3	
F4	Switch to hidden mode [Ctrl+Shift+H]

Back to [Table of contents](#)

Slider devices with 'Philips' switch style

SpeechMike Premium / SpeechMike Premium Air

LFH3520, SMP3720

Keyboard mode**Button settings for Dragon speech recognition**

The SpeechMike Premium models can easily be used with Dragon speech recognition via Plug & Play.
No additional software is required.

The buttons of your SpeechMike Premium are preconfigured with the following settings and commands.

Press the EOL/Prio and the Ins/Ovr button until all LEDs will light up in orange.
After that click F2 to activate the Keyboard mode.



Command	Shortcut	Command	Shortcut
FFWD		PLAY	SpeechMike Mic ON [Microphone ON]
EOL/Prio	Tab backwards (e.g. email) [Shift+Tab]	Ins/Ovr	Tab forwards [Tab]
STOP	SpeechMike Mic OFF [Microphone OFF]	FRWD	
-i-	Next Field (Dragon) [Ctrl+Shift+N]	REC	Dragon Mic ON/OFF [NumKey +]
LM	Left mouse	RM	Right Mouse
F1	Show dictation box [Ctrl+Shift+D]	TP	Cursor control + Left mouse
F2	Transfer text [Ctrl+Shift+T]	F3	
		F4	Switch to hidden mode [Ctrl+Shift+H]

SpeechMike Premium / SpeechMike Premium Air

LFH3520, SMP3720

Custom 1 mode: Windows speech recognition

Button settings for Windows speech recognition

The SpeechMike Premium models can easily be used with Windows speech recognition via Plug & Play.

No additional software is required.

The buttons of your SpeechMike Premium are preconfigured with the following settings and commands.

Press the EOL/Prio and the Ins/Ovr button until all LEDs will light up in orange.
After that click F4 to activate the Custom 1 mode.



Command	Shortcut
FFWD	Mark words forwards [Ctrl+Shift+Right]
EoL/Prio	Previous field (e.g. email) [Shift+Tab]
STOP	
-i-	
LM	Left mouse
F1	Copy [Ctrl+C]
F2	Cut [Ctrl+X]
PLAY	
Ins/Ovr	Next field (e.g. email) [Tab]
FRWD	Mark words backwards [Ctrl+Shift+Left]
REC	Windows Mic ON/OFF [Ctrl+Win]
RM	Right Mouse
TP	Cursor control + Left mouse
F3	Paste [Ctrl+V]
F4	

SpeechMike Premium Air

SpeechMike Premium / SpeechMike Premium Air

LFH3520, SMP3720

Custom 2 mode: Dragon for Mac

Button settings for Dragon for Mac speech recognition

The SpeechMike Premium models can easily be used with Dragon for Mac speech recognition via Plug & Play.

No additional software is required.

The buttons of your SpeechMike Premium are preconfigured with the following settings and commands.

Press the EOL/Prio and the Ins/Ovr button until all LEDs will light up in orange.
After that click EOL/Prio to activate the Custom 2 mode.



Command	Shortcut
FFWD	Mark words forwards [Alt+Shift+Right]
EOL/Prio	Previous field (e.g. email) [Shift+Tab]
STOP	
-i-	
LM	Left mouse
F1	Copy [⌘+C]
F2	Cut [⌘+X]
PLAY	
Ins/Ovr	Next field (e.g. email) [Tab]
FRWD	Mark words backwards [Alt+Shift+Left]
REC	Microphone ON/OFF [⌘+F11]
RM	Right Mouse
TP	Cursor control + Left mouse
F3	Paste [⌘+V]
F4	

SpeechMike Premium / SpeechMike Premium Air

LFH3520, SMP3720

Custom 3 mode: Dragon for Windows

Button settings for Dragon for Windows speech recognition

The SpeechMike Premium models can easily be used with Dragon speech recognition via Plug & Play.

No additional software is required.

The buttons of your SpeechMike Premium are preconfigured with the following settings and commands.

Press the EOL/Prio and the Ins/Ovr button until all LEDs will light up in orange.
After that click Ins/Ovr to activate the Custom 3 mode.



Command	Shortcut
FFWD Next Field (Dragon)	[Ctrl+Shift+N]
EoL/Prio Tab backwards	[Shift+Tab]
PLAY	
-i-	
LM Left mouse	
F1 Show dictation box	[Ctrl+Shift+D]
F2 Transfer text	[Ctrl+Shift+T]

Command	Shortcut
PLAY	
Ins/Ovr Tab forwards	[Tab]
FRWD Mark words backwards	[Ctrl+Shift+Left]
REC Dragon Mic ON/OFF	[NumKey +]
RM Right Mouse	
TP Cursor control + Left mouse	
F3	
F4 Switch to hidden mode	[Ctrl+Shift+H]

Back to [Table of contents](#)

LIST OF DEFAULT BUTTON CONFIGURATIONS IN DIVERSE BUTTON MODES

Button devices

The following table is valid for SpeechMike Premium LFH3500/3600, SpeechMike Premium Touch SMP3700/3800, SpeechMike Premium Air SMP4000

Button	Event mode	Barcode Trigger ¹	Keyboard mode ²		Browser mode ³			Custom 1 mode (Windows SR) ⁴		Custom 2 mode (Dragon for Mac) ⁴		Custom 3 mode (Dragon for Windows) ⁴	
			Hotkey	Internal	Hotkey	Gamepad	Internal	Hotkey	Internal	Hotkey	Internal	Hotkey	Internal
EOL	EOL		{Shift+Tab}			Yes (14)		{Shift+Tab}		{Shift+Tab}		{Shift+Tab}	
INS/OVR	INS/OVR		{Tab}			Yes (4)		{Tab}		{Tab}		{Tab}	
FRWD	FRWD		{Ctrl+Shift+Left}			Yes (0)		{Ctrl+Shift+Left}		{Alt+Shift+Left}		{Ctrl+Shift+Left}	
FFWD	FFWD		{Ctrl+Shift+N}			Yes (2)		{Ctrl+Shift+Right}		{Alt+Shift+Right}		{Ctrl+Shift+N}	
RECORD	RECORD			ToggleMic		Yes (5)		{Ctrl+Win}		{⌘+F11}		{NumKey+}	
PLAY	PLAY					Yes (1)							
INSTRUCTION	INSTRUCTION		{NumKey+}			Yes (9)							
COMMAND	COMMAND ¹	Yes				Yes (6)							
TRIGGER	MOUSE LEFT					Yes (7)							
LEFT MOUSE	MOUSE LEFT												
RIGHT MOUSE	MOUSE RIGHT												
F1	F1		{Ctrl+Shift+D}			Yes (10)		{Ctrl+C}		{⌘+C}		{Ctrl+Shift+D}	
F2	F2		{Ctrl+Shift+T}			Yes (11)		{Ctrl+X}		{⌘+X}		{Ctrl+Shift+T}	
F3	F3					Yes (12)		{Ctrl+V}		{⌘+V}			
F4	F4		{Ctrl+Shift+H}			Yes (13)						{Ctrl+Shift+H}	

¹ Barcode trigger is only supported by LFH3600 and SMP3800. Default event for COMMAND button in Event mode becomes 'disabled' instead of command event for these devices.

² Keyboard mode is supported by LFH3500/3600 from FW v2.50 onwards, SMP3700/3800 and SMP4000

³ Browser mode is supported by SMP3700/3800 from FW v3.50 onwards and SMP4000

⁴ Windows SR mode, Dragon for Mac mode and Dragon for Windows mode are supported by LFH3500/3600 from FW v2.60, SMP3700/3800 from FW v3.50, and SMP4000 from FW v4.50 onwards

Back to [Table of contents](#)

International Slider devices

The following table is valid for SpeechMike Premium LFH3510/3610 and SpeechMike Premium Touch SMP3710/3810, and SpeechMike Premium Air SMP4010

Button	Event mode	Barcode Trigger ¹	Keyboard mode ²		Browser mode ³			Custom 1 mode (Windows SR) ⁴		Custom 2 mode (Dragon for Mac) ⁴		Custom 3 mode (Dragon for Windows) ⁴	
			Hotkey	Internal	Hotkey	Gamepad	Internal	Hotkey	Internal	Hotkey	Internal	Hotkey	Internal
EOL	EOL		{Shift+Tab}			Yes (14)		{Shift+Tab}		{Shift+Tab}		{Shift+Tab}	
INS/OVR	INS/OVR		{Tab}			Yes (4)		{Tab}		{Tab}		{Tab}	
INSTRUCTION	INSTRUCTION		{NumKey+}			Yes (9)							
FFWD	FFWD		{Ctrl+Shift+N}			Yes (2)		{Ctrl+Shift+Right}		{Alt+Shift+Right}		{Ctrl+Shift+N}	
SLIDER - REC	RECORD			MicOn		Yes (5)		{Ctrl+Win} ⁵		{⌘+F11} ⁵		{NumKey+} ⁵	
SLIDER - STOP	STOP			MicOff		Yes (8)							
SLIDER - PLAY	PLAY					Yes (1)							
SLIDER - FRWD	FRWD					Yes (0)		{Ctrl+Shift+Left}		{Alt+Shift+Left}		{Ctrl+Shift+Left}	
COMMAND	COMMAND ¹	Yes				Yes (6)							
TRIGGER	MOUSE LEFT					Yes (7)							
LEFT MOUSE	MOUSE LEFT												
RIGHT MOUSE	MOUSE RIGHT												
F1	F1		{Ctrl+Shift+D}			Yes (10)		{Ctrl+C}		{⌘+C}		{Ctrl+Shift+D}	
F2	F2		{Ctrl+Shift+T}			Yes (11)		{Ctrl+X}		{⌘+X}		{Ctrl+Shift+T}	
F3	F3					Yes (12)		{Ctrl+V}		{⌘+V}			
F4	F4		{Ctrl+Shift+H}			Yes (13)						{Ctrl+Shift+H}	

¹ Barcode trigger is only supported by LFH3610 and SMP3810. Default event for COMMAND button in Event mode becomes 'disabled' instead of command event for these devices

² Keyboard mode is supported by LFH3510/3610 from FW v2.50 onwards and SMP3710/3810/4010

³ Browser mode is supported by SMP3710/3810 from FW v3.50 onwards and SMP4010

⁴ Windows SR mode, Dragon for Mac mode and Dragon for Windows mode are supported by LFH3510/3610 from FW v2.60, SMP3710/3810 from FW v3.50, and SMP4010 from FW v4.50 onwards

⁵ Sends this keyboard event when button or slider is pressed as well as released

Back to [Table of contents](#)

Philips Slider devices

The following table is valid for SpeechMike Premium LFH3520 and SpeechMike Premium Touch SMP3720

Button	Event mode	Keyboard mode ¹		Browser mode ²			Custom 1 mode (Windows SR) ⁴		Custom 2 mode (Dragon for Mac) ⁴		Custom 3 mode (Dragon for Windows) ⁴	
	Event id	Hotkey	Internal	Hotkey	Gamepad	Internal	Hotkey	Internal	Hotkey	Internal	Hotkey	Internal
EOL	EOL	{Shift+Tab}			Yes (14)		{Shift+Tab}		{Shift+Tab}		{Shift+Tab}	
INS/OVR	INS/OVR	{Tab}			Yes (4)		{Tab}		{Tab}		{Tab}	
INSTRUCTION	INSTRUCTION	{Ctrl+Shift+N}			Yes (9)							
RECORD	RECORD	{NumKey+}			Yes (5)		{Ctrl+Win}		{⌘+F11}		{NumKey+}	
SLIDER - FFWD	FFWD				Yes (2)		{Ctrl+Shift+Right}		{Alt+Shift+Right}		{Ctrl+Shift+N}	
SLIDER - PLAY	PLAY		MicOn		Yes (1)							
SLIDER - STOP	STOP		MicOff		Yes (8)							
SLIDER - FRWD	FRWD				Yes (0)		{Ctrl+Shift+Left}		{Alt+Shift+Left}		{Ctrl+Shift+Left}	
COMMAND	COMMAND ¹				Yes (6)							
TRIGGER	MOUSE LEFT				Yes (7)							
LEFT MOUSE	MOUSE LEFT											
RIGHT MOUSE	MOUSE RIGHT											
F1	F1	{Ctrl+Shift+D}			Yes (10)		{Ctrl+C}		{⌘+C}		{Ctrl+Shift+D}	
F2	F2	{Ctrl+Shift+T}			Yes (11)		{Ctrl+X}		{⌘+X}		{Ctrl+Shift+T}	
F3	F3				Yes (12)		{Ctrl+V}		{⌘+V}			
F4	F4	{Ctrl+Shift+H}			Yes (13)						{Ctrl+Shift+H}	

¹ Keyboard mode is supported by 3520 from FW v2.50 and 3720 onwards

² Browser mode is supported by 3720 from FW v3.50 onwards

³ Windows SR mode, Dragon for Mac mode and Dragon for Windows mode are supported by 3520 from FW v2.60 and 3720 from FW v3.50 onwards

Back to [Table of contents](#)

Hotkey functions

The hokeys mentioned above translate to the following actions in the corresponding application and/or platform:

Hotkey	Desired action	Platform or application
{Shift+Tab}	Previous field (e.g. for email clients like MS Outlook)	Windows + Mac
{Tab}	Next field	Windows + Mac
{Ctrl+Shift+Left}	Mark words backward	Windows
{Ctrl+Shift+N}	Next field	Dragon on Windows
{NumKey+}	Toggle microphone	Dragon on Windows
{Ctrl+Shift+D}	Show Dictation Box	Dragon on Windows
{Ctrl+Shift+T}	Transfer text	Dragon on Windows
{Ctrl+Shift+H}	Hide Dictation Box / Switch to hidden mode	Dragon on Windows
{Ctrl+Shift+Right}	Mark words forward	Windows
{Ctrl+Win}	Toggle microphone	Windows speech recognition
{Ctrl+C}	Copy	Windows
{Ctrl+X}	Cut	Windows
{Ctrl+V}	Paste	Windows
{Alt+Shift+Left}	Mark words backward	Mac
{Alt+Shift+Right}	Mark words forward	Mac
{⌘+F11}	Toggle microphone	Dragon on Mac*
{⌘+C}	Copy	Mac
{⌘+X}	Cut	Mac
{⌘+V}	Paste	Mac

*... can also be used for Mac Dictation – see below

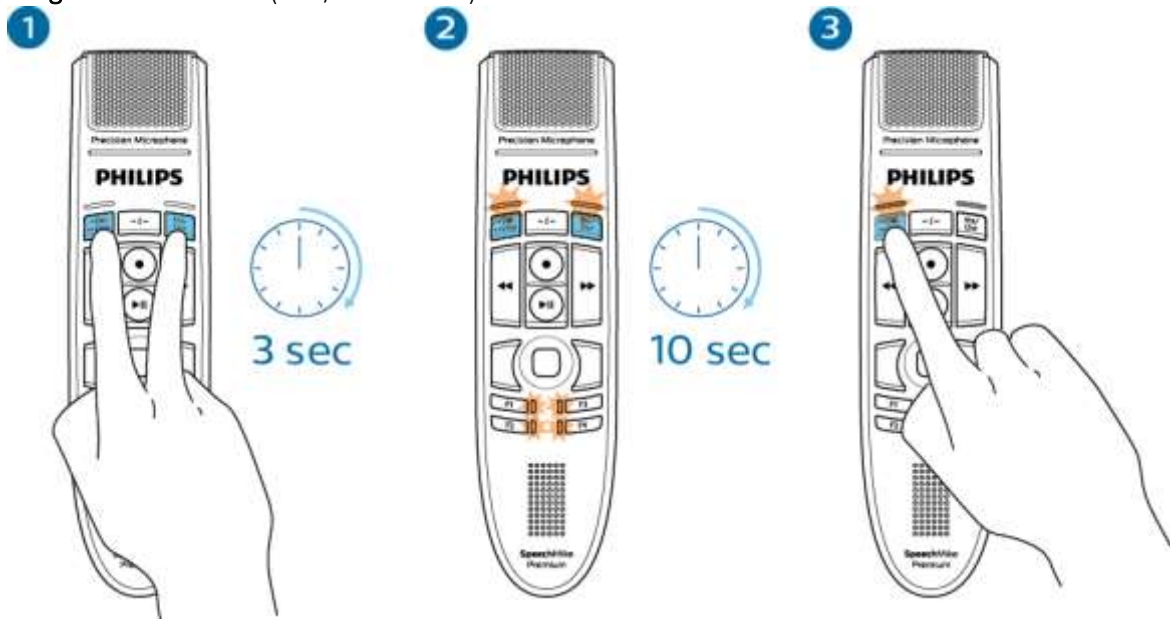
Back to [Table of contents](#)

USING A SPEECHMIKE WITH MAC DICTATION

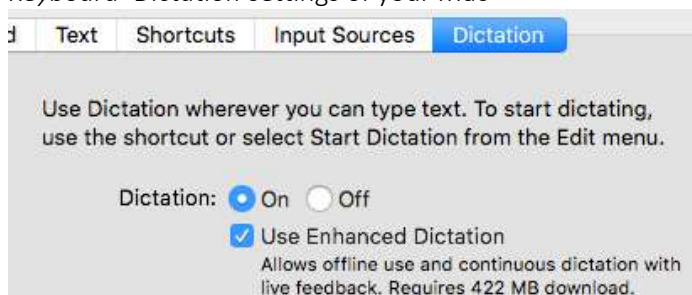
To use the onboard **Mac Dictation** function the SpeechMike has to send the appropriate hotkeys to the Mac computer.

Therefore, follow the steps below:

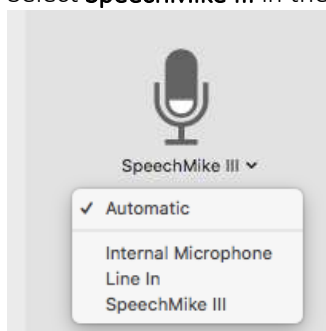
- Connect your SpeechMike to the Mac computer and switch the SpeechMike Premium to **Dragon for Mac mode** (EOL/Prio button).



- Enable **Mac Dictation** and **Use Enhanced Dictation** for continuous dictation (speech recognition) in the *Keyboard>Dictation* settings of your Mac



- Select **SpeechMike III** in the drop down menu of the microphone



- Select the language(s) with which you would like to use Mac dictation.

Note: It might need some time to download the selected languages from Apple



- Apply a different shortcut, which will be used by the SpeechMike to control Mac Dictation. We recommend using the preconfigured setting on the SpeechMike of Dragon for Mac (⌘+F11).
 - Click on the shortcut drop down menu and select **Customize**



- Press the preferred Hotkey (e.g. ⌘+F11)



Now you can start using the SpeechMike Premium with Mac Dictation.

When clicking on the Record button the Mac Dictation dialog will appear besides the editor window that is currently in focus.



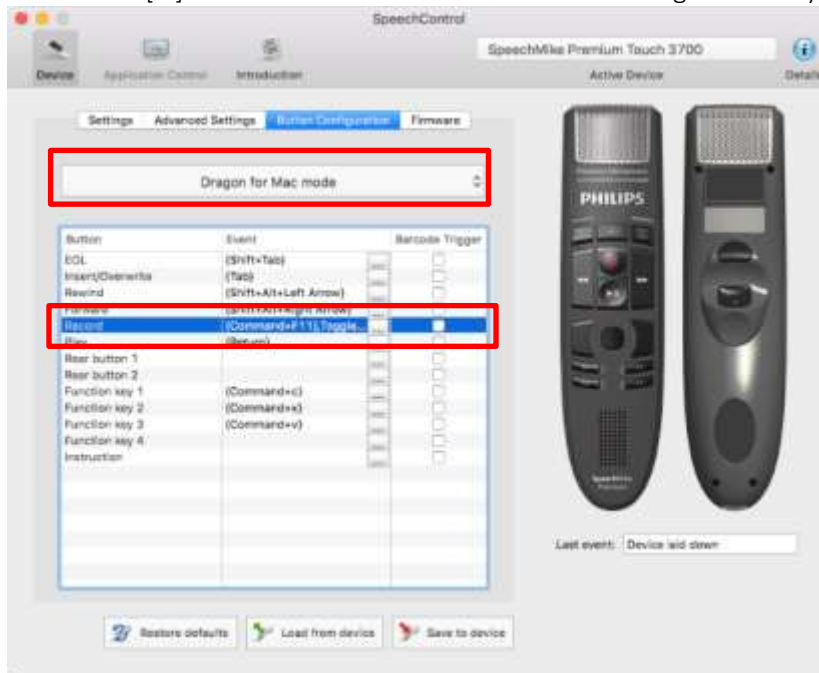
Back to [Table of contents](#)

Controlling the Record LED

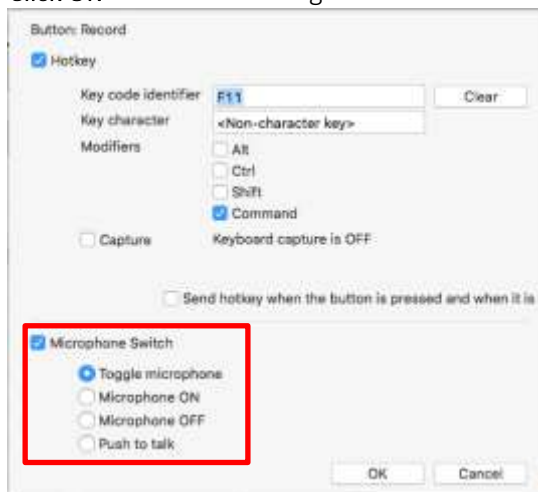
When using Mac Dictation it might happen that, the Record LED is always lit (reasons for that see chapter '[The Record LED challenge](#)').

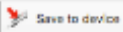
If this is annoying for you please follow the steps below:

1. Connect your SpeechMike Premium to the Mac and open SpeechControl for Mac 3.4 or later.
2. In SpeechControl go to Device > Button configuration
3. If not already selected select the Dragon for Mac mode from the drop down list
4. Click on the [...] icon of the Record button to edit the assigned hotkey configuration



5. Enable the **Microphone switch** setting and select **Toggle microphone**. Click OK to close the dialog



6. Click on **Save to device**  to upload the changed settings to your SpeechMike Premium

Note: When using this setting the Mac Dictation and the SpeechMike **might come out of sync** (Mac Dictation is ON while the SpeechMike LED is OFF).

To synchronize the SpeechMike with Mac Dictation press the Hotkey on the Mac keyboard (e.g. +F11) once.

Back to [Table of contents](#)

THE RECORD LED CHALLENGE

If a SpeechMike is **fully integrated** into a recording application the **microphone** as well as the **Record LED** are controlled by the application.

Utilizing the **SpeechMike event mode** the SpeechMike microphone and the LEDs just react on commands that are sent to the SpeechMike by the recording application over the SpeechMike SDK interface.



However, if the SpeechMike is **not integrated** into the recording application (e.g. Dragon NaturallySpeaking), or if no SpeechMike driver software can be installed (e.g. on Zero clients), or if the user is working in browser environments the recording application cannot control any of the SpeechMike functions over the SDK interfaces.

The user has to switch to one of the new **Custom modes** to **control** the recording **application** via **hot keys**.

Now, when users start recording in these environments they expect, that the **Record LED lights up** when the recorder is **in record mode** and that it is **turned off** if the recorder is **not recording**.

Since the recording application cannot control the SpeechMike Record LED in these environments the SpeechMike has to do that on its own.

We realized that by watching whether the microphone USB audio channel is opened or closed which is usually done by the recording application. If the microphone USB audio channel is open the Record LED will light up and if it is closed it would be turned OFF.

THE CHALLENGE

Some applications or some environments **do not close the USB audio channel**, even if the recorder is switched off.

In this case, the Record LED would always be turned **ON** and the users would be confused, because they do not see the real record status of the recording application on the SpeechMike.

We have experienced this behavior in some Dragon NaturallySpeaking installations and in some browser-based applications where a fast switching of USB audio channels is not possible.

THE SOLUTION

To control the **Record LED** on the SpeechMike the user can use SpeechControl to add the microphone switch to a SpeechMike hotkey.

By doing this the microphone USB audio stream is opened on the device and the Record LED lights up when recording is started and the Record LED is turned off when recording is stopped.

Examples for Dragon Naturally Speaking (Windows) can be found below

Notes:

- It might happen that users confuse this behavior by pressing record start and stop on the recording application instead of the SpeechMike. Then the SpeechMike microphone and the Record LED will come out of sync with the recording application. To synchronize the SpeechMike with the recording application again just press record start or record stop once in the recording application.

Back to [Table of contents](#)

Button programming with LED control (example for Dragon NaturallySpeaking)

SpeechMike Premium / SpeechMike Premium Air

LFH3500/3600, SMP3700/3800/4000

Modified Custom 3 mode: Dragon for Windows

Button settings for Dragon for Windows speech recognition with Record LED control

The SpeechMike Premium models can easily be used with Dragon speech recognition via Plug & Play.

In case of issues with the Record LED simply add the microphone events for the Custom 3 mode (marked in red) to the assigned hotkeys on the buttons with SpeechControl 4.1 or later.

After that simply upload the new settings to the SpeechMike.



SpeechMike Premium / SpeechMike Premium Air

LFH3510/3610, SMP3710/3810/4010

Modified Custom 3 mode: Dragon for Windows

Button settings for Dragon for Windows speech recognition with Record LED control

The SpeechMike Premium models can easily be used with Dragon speech recognition via Plug & Play.

In case of issues with the Record LED simply add the microphone events for the Custom 3 mode (marked in red) to the assigned hotkeys on the buttons with SpeechControl 4.1 or later.

After that simply upload the new settings to the SpeechMike.wing settings and commands.

Command	Shortcut
REC	Dragon Mic ON/OFF [NumKey+] + [Microphone ON]
STOP	SpeechMike Mic OFF [Microphone OFF]
Eol/Prio	Tab backwards [Shift+Tab]
Ins/Ovr	Tab forwards [Tab]
PLAY	
FRWD	
-I-	
FFWD	Next Field (Dragon) [Ctrl+Shift+N]
LM	Left mouse
RM	Right Mouse
F1	Show dictation box [Ctrl+Shift+D]
TP	Cursor control + Left mouse
F2	Transfer text [Ctrl+Shift+T]
F3	
F4	Switch to hidden mode [Ctrl+Shift+H]

SpeechMike Premium / SpeechMike Premium Air

LFH3520, SMP3720

Modified Custom 3 mode: Dragon for Windows

Button settings for Dragon for Windows speech recognition with Record LED control

The SpeechMike Premium models can easily be used with Dragon speech recognition via Plug & Play. In case of issues with the Record LED simply add the microphone events for the Custom 3 mode (marked in red) to the assigned hotkeys on the buttons with SpeechControl 4.1 or later.

After that simply upload the new settings to the SpeechMike.

Command	Shortcut
FFWD	Next Field (Dragon) [Ctrl+Shift+N]
EoL/Prio	Tab backwards [Shift+Tab]
PLAY	
- -	
LM	Left mouse
F1	Show dictation box [Ctrl+Shift+D]
F2	Transfer text [Ctrl+Shift+T]

Command	Shortcut
PLAY	
Ins/Ovr	Tab forwards [Tab]
FRWD	Mark words backwards [Ctrl+Shift+Left]
REC	Dragon Mic ON/OFF [NumKey +] + [Toggle microphone]
RM	Right Mouse
TP	Cursor control + Left mouse
F3	
F4	Switch to hidden mode [Ctrl+Shift+H]

Back to [Table of contents](#)

SPEECHMIKE 2 OPERATION MODE FOR SMP3700/3800 SERIES

The SpeechMike 2 operation mode simulates a connected SpeechMike 2 to the recording application.

From the new V3.50 firmware onwards the **SpeechMike Premium Touch** SMP3700/3800 series will also support the SpeechMike 2 operation mode.

In the SpeechMike 2 operation mode the SpeechMike Premium Touch **only** provides **SpeechMike 2 functionality** to the recording application.

Notes:

- The SpeechMike 2 mode can only be enabled by pressing the F1+F3 simultaneously for 5 seconds, if the SpeechMike is in **event mode**!
- In SpeechMike 2 operation mode users can neither do firmware upgrades nor switch to any other button modes.
- New buttons like the '-i-' button are not supported in SpeechMike 2 operation mode, because they were not available in the SpeechMike 2.
- Due to technical limitations we cannot add the SpeechMike 2 operation mode to the SpeechMike Premium Air SMP4000 series

The table below shows which devices will be including the SpeechMike 2 operation mode

SpeechMike version	SMII mode
SpeechMike III LFH3200/3300 series	●
SpeechMike Premium LFH3500/3600 series	●
SpeechMike Premium Touch SMP3700/3800 series	FW3.50
SpeechMike Premium Air SMP4000 series*	-

● ... Already available in earlier firmware versions

*... due to technical restrictions, it is not possible to include the SpeechMike 2 operation mode in this device

Back to [Table of contents](#)

HOW TO SWITCH TO/FROM SPEECHMIKE 2 OPERATION MODE

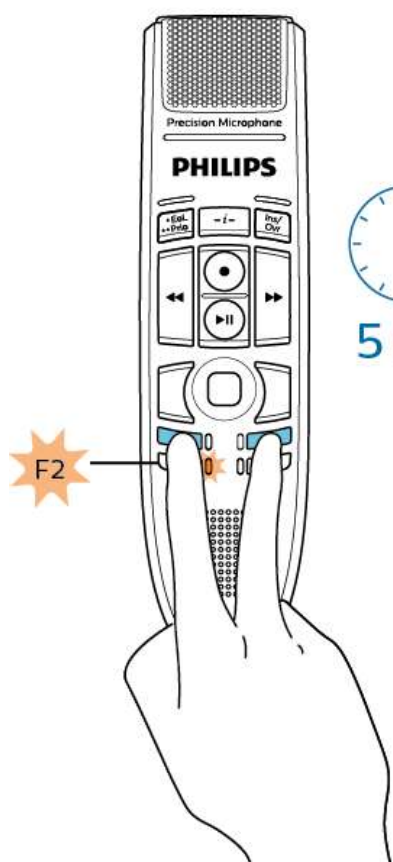
To toggle between the operation modes users just need to press the F1+F3 key simultaneously for 5 seconds.

When the switch is done a short beep can be heard and the corresponding SpeechMike operation mode is indicated by a function key LED:

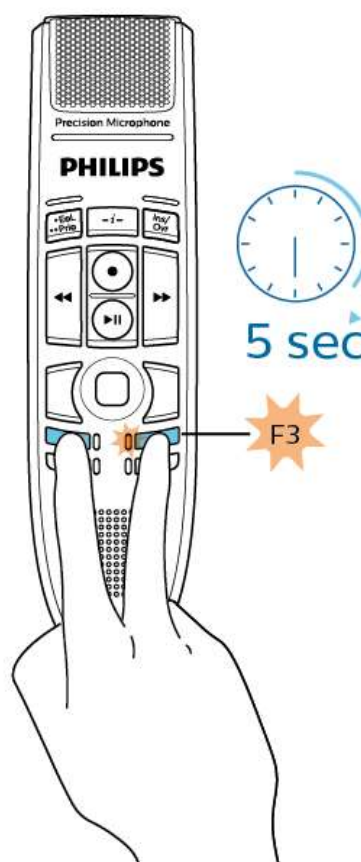
- When the SpeechMike switches to the SpeechMike **2** mode the **F2** LED lights up
- When the SpeechMike switches to the **Standard** mode the **F3** LED lights up

SpeechMike operation modes

SpeechMike 2 mode



Standard mode




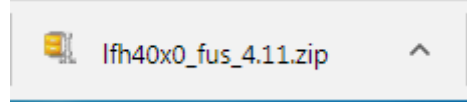
Note: the same shortcuts also work for SpeechMike 3 and SpeechMike Premium

Back to [Table of contents](#)

HOW TO UPGRADE SPEECHMIKE FIRMWARE WITH SPEECHCONTROL

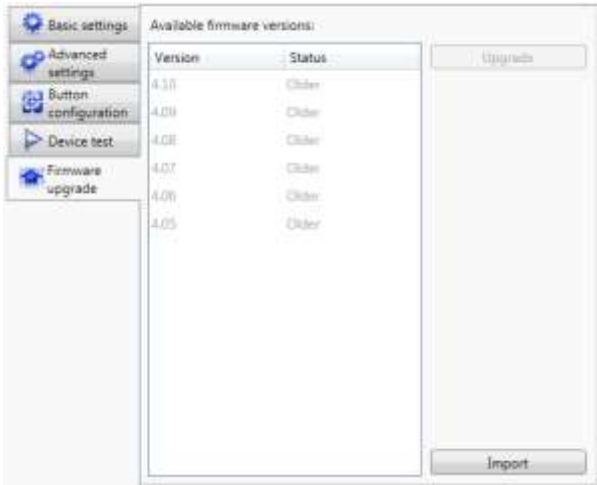
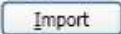
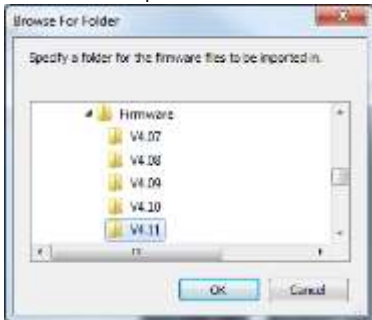
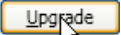
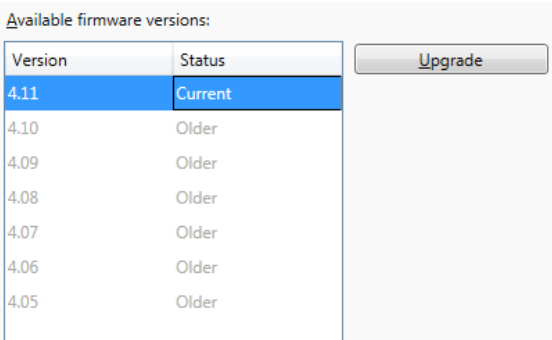
GET THE FIRMWARE


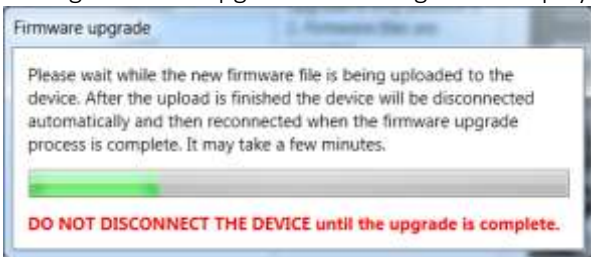
To get the latest firmware follow the steps below

Step	Description
Step 1	<p>Go to the appropriate SpeechMike support page and download the <i>appropriate</i> firmware <i>for your device</i>.</p> <p>Note: For firmware upgrades you need to have the latest SpeechControl software installed. You can download SpeechControl from the same website.</p>  <p>screenshot for illustration only</p>
Step 2	<p>Download the <i>firmware</i> Zip file to your PC.</p>  <p>screenshot for illustration only</p>
Step 3	<p>Extract the firmware file into a specific folder on your PC (e.g. C:\MyDocuments\SpeechMike\Firmware)</p>

RUN THE FIRMWARE UPGRADE

To run a firmware upgrade please use the [SpeechControl](#) software

Step	Description
Step 1	<p>Start Speech Control</p> <p>Connect the SpeechMike, start SpeechControl and open the "Device –Firmware upgrade" tab.</p> <p>In this tab users can load the latest firmware into the SpeechMike 3.</p>  <p>screenshot for illustration only</p>
Step 2 	<p>Load the firmware version into SpeechControl</p> <ul style="list-style-type: none"> Click on "Import" and select the folder that contains the firmware you want to import.  <p>screenshot for illustration only</p> <ul style="list-style-type: none"> Click "OK"
Step 3 	<p>Load the firmware into your SpeechMike</p> <ul style="list-style-type: none"> To start firmware upgrade select the firmware version you want to use and click "Upgrade"  <p>screenshot for illustration only</p> <p>ATTENTION: During firmware upgrade the USB cable has to stay connected.</p>

Step	Description
Step 4	<p>Confirm the firmware upgrade</p> <ul style="list-style-type: none">The following confirmation dialog appears.Click "Yes", to upgrade to the device. 
Step 5	<p>Run the firmware upgrade</p> <ul style="list-style-type: none">During firmware upgrade this dialog box is displayed until firmware upgrade has finished: 
Finish	When the firmware upgrade box has disappeared the device is ready to use again

Back to [Table of contents](#)

SPEECHMIKE FEATURE LIST AND FEATURE COMPARISON LIST

SpeechMike version	Premium Air	Premium Air	Premium Touch	Premium Touch	Premium Touch	Premium Touch BC	Premium Touch BC	Premium	Premium	Premium	III	III	III
Type no.	SMP4000	SMP4010	SMP3700	SMP3710	SMP3720	SMP3800	SMP3810	LFH3500	LFH3510	LFH3520	LFH3200	LFH3210	LFH3220
Button/slider	Button	Slider	Button	Slider	Slider	Button	Slider	Button	Slider	Slider	Button	Slider	Slider
Control Elements													
Primary dictation controls													
4- position switch style	-	INT	-	INT	PHI	-	INT	-	INT	PHI	-	INT	PHI
Record button	✓	-	✓	-	✓	✓	-	✓	-	✓	✓	-	✓
Fast Forward button	✓	✓	✓	✓	-	✓	✓	✓	✓	-	✓	✓	-
Fast Rewind button	✓	-	✓	-	-	✓	-	✓	-	-	✓	-	-
Play/Stop button	✓	-	✓	-	-	✓	-	✓	-	-	✓	-	-
Secondary dictation controls													
End Of Letter /Priority (EOL) button	✓	✓	✓	✓	✓	✓	✓	✓	✓	✓	✓	✓	✓
Insert/Overwrite button	✓	✓	✓	✓	✓	✓	✓	✓	✓	✓	✓	✓	✓
Instruction button	✓	✓	✓	✓	✓	✓	✓	✓	✓	✓	-	-	-
PC controls													
Mouse functions	✓	✓	✓	✓	✓	✓	✓	✓	✓	✓	✓	✓	✓
Trackball	-	-	-	-	-	-	-	✓	✓	✓	✓	✓	✓
Touchpad	✓	✓	✓	✓	✓	✓	✓	-	-	-	-	-	-
Trackball/Touchpad key	✓	✓	✓	✓	✓	✓	✓	✓	✓	✓	✓	✓	✓
Right mouse button	✓	✓	✓	✓	✓	✓	✓	✓	✓	✓	✓	✓	✓
Left mouse button top side	✓	✓	✓	✓	✓	✓	✓	✓	✓	✓	✓	✓	✓
Left mouse button rear side (trigger)	✓	✓	✓	✓	✓	✓	✓	✓	✓	✓	✓	✓	✓
Pick&drop for left mouse button function	✓(ON)	✓(ON)	✓(ON)	✓(ON)	✓(ON)	✓(ON)	✓(ON)	✓(ON)	✓(ON)	✓(ON)	✓(ON)	✓(ON)	✓(ON)
Scroll wheel via F-keys	✓(OFF)	✓(OFF)	✓(OFF)	✓(OFF)	✓(OFF)	✓(OFF)	✓(OFF)	✓(OFF)	✓(OFF)	✓(OFF)	-	-	-
Other Functions													
ON/OFF button	✓	✓	-	-	-	-	-	-	-	-	-	-	-
COMMAND button	✓	✓	✓	✓	✓	✓	✓	✓	✓	✓	-	-	-
Barcode scanner	-	-	-	-	-	✓	✓	-	-	-	-	-	-
Volume Control - via touchpad or trackball	✓	✓	✓	✓	✓	✓	✓	✓	✓	✓	✓	✓	✓
Full Duplex audio data transfer	✓	✓	✓	✓	✓	✓	✓	✓	✓	✓	✓	✓	✓
Motion control (mic or rec status)	✓(OFF)	✓(OFF)	✓(OFF)	✓(OFF)	✓(OFF)	✓(OFF)	✓(OFF)	✓(OFF)	✓(OFF)	✓(OFF)	-	-	-

SpeechMike version	Premium Air	Premium Air	Premium Touch	Premium Touch	Premium Touch	Premium Touch BC	Premium Touch BC	Premium	Premium	Premium	III	III	III
Type no.	SMP4000	SMP4010	SMP3700	SMP3710	SMP3720	SMP3800	SMP3810	LFH3500	LFH3510	LFH3520	LFH3200	LFH3210	LFH3220
Button/slider	Button	Slider	Button	Slider	Slider	Button	Slider	Button	Slider	Slider	Button	Slider	Slider
Functions keys													
Function key 1 + LED	✓	✓	✓	✓	✓	✓	✓	✓	✓	✓	✓	✓	✓
Function key 2 + LED	✓	✓	✓	✓	✓	✓	✓	✓	✓	✓	✓	✓	✓
Function key 3 + LED	✓	✓	✓	✓	✓	✓	✓	✓	✓	✓	✓	✓	✓
Function key 4 + LED	✓	✓	✓	✓	✓	✓	✓	✓	✓	✓	-	-	-
Operation modes													
SpeechMike 3 mode	✓(OFF)	✓(OFF)	✓(OFF)	✓(OFF)	✓(OFF)	✓(OFF)	✓(OFF)	✓(OFF)	✓(OFF)	✓(OFF)	n.a.	n.a.	n.a.
SpeechMike 2mode	-	-	✓(OFF)	✓(OFF)	✓(OFF)	✓(OFF)	✓(OFF)	✓(OFF)	✓(OFF)	✓(OFF)	✓(OFF)	✓(OFF)	✓(OFF)
Button modes													
SpeechMike event mode	✓(ON)	✓(ON)	✓(ON)	✓(ON)	✓(ON)	✓(ON)	✓(ON)	✓(ON)	✓(ON)	✓(ON)	✓(ON)	✓(ON)	✓(ON)
Dragon mode (Windows) – Custom1	✓(OFF)	✓(OFF)	✓(OFF)	✓(OFF)	✓(OFF)	✓(OFF)	✓(OFF)	✓(OFF)	✓(OFF)	✓(OFF)	-	-	-
Windows speech recognition mode – Custom 2	✓(OFF)	✓(OFF)	✓(OFF)	✓(OFF)	✓(OFF)	✓(OFF)	✓(OFF)	✓(OFF)	✓(OFF)	✓(OFF)	-	-	-
Dragon Dictate (Mac) – Custom 3	✓(OFF)	✓(OFF)	✓(OFF)	✓(OFF)	✓(OFF)	✓(OFF)	✓(OFF)	✓(OFF)	✓(OFF)	✓(OFF)	-	-	-
Keyboard mode	✓(OFF)	✓(OFF)	✓(OFF)	✓(OFF)	✓(OFF)	✓(OFF)	✓(OFF)	✓(OFF)	✓(OFF)	✓(OFF)	-	-	-
Browser mode	✓(OFF)	✓(OFF)	✓(OFF)	✓(OFF)	✓(OFF)	✓(OFF)	✓(OFF)	-	-	-	-	-	-
Function Elements													
Microphone													
Free floating microphone suspension	✓	✓	✓	✓	✓	✓	✓	✓	✓	✓	-	-	-
Metal microphone grille with hexagonal openings	✓	✓	✓	✓	✓	✓	✓	✓	✓	✓	-	-	-
Integrated pop filter	✓	✓	✓	✓	✓	✓	✓	✓	✓	✓	-	-	-
Unidirectional capsule	✓	✓	✓	✓	✓	✓	✓	✓	✓	✓	✓	✓	✓
Other function elements													
Loudspeaker Ø 30 mm	✓	✓	✓	✓	✓	✓	✓	✓	✓	✓	✓	✓	✓
Record LED (red/green/yellow)	✓	✓	✓	✓	✓	✓	✓	✓	✓	✓	✓	✓	✓
Insert/Overwrite LED (red/green/yellow)	✓	✓	✓	✓	✓	✓	✓	✓	✓	✓	✓	✓	✓
Command/Instruction LED (red/green/yellow)	✓	✓	✓	✓	✓	✓	✓	✓	✓	✓	✓	✓	✓
Anti skid bottom elements	✓	✓	✓	✓	✓	✓	✓	✓	✓	✓	✓	✓	✓
Battery status indication LED (red/green/yellow)	✓	✓	n.a.	n.a.	n.a.	n.a.	n.a.	n.a.	n.a.	n.a.	n.a.	n.a.	n.a.
Connection LED (red/green/yellow)	✓	✓	n.a.	n.a.	n.a.	n.a.	n.a.	n.a.	n.a.	n.a.	n.a.	n.a.	n.a.
Haptic connection loss indication (vibration alarm)	✓	✓	n.a.	n.a.	n.a.	n.a.	n.a.	n.a.	n.a.	n.a.	n.a.	n.a.	n.a.
Connectors													
Micro USB connector for emergency charging	✓	✓	n.a.	n.a.	n.a.	n.a.	n.a.	n.a.	n.a.	n.a.	n.a.	n.a.	n.a.
Mini USB connector for PC connection	-	-	✓	✓	✓	✓	✓	✓	✓	✓	✓	✓	✓
Wireless functions													

SpeechMike version	Premium Air	Premium Air	Premium Touch	Premium Touch	Premium Touch	Premium Touch BC	Premium Touch BC	Premium	Premium	Premium	III	III	III
Type no.	SMP4000	SMP4010	SMP3700	SMP3710	SMP3720	SMP3800	SMP3810	LFH3500	LFH3510	LFH3520	LFH3200	LFH3210	LFH3220
Button/slider	Button	Slider	Button	Slider	Slider	Button	Slider	Button	Slider	Slider	Button	Slider	Slider
Quick & Easy pairing	✓	✓	n.a.	n.a.	n.a.	n.a.	n.a.	n.a.	n.a.	n.a.	n.a.	n.a.	n.a.
Wireless connection up to 5m	✓	✓	n.a.	n.a.	n.a.	n.a.	n.a.	n.a.	n.a.	n.a.	n.a.	n.a.	n.a.
Gesture control (find docking station)	✓	✓	n.a.	n.a.	n.a.	n.a.	n.a.	n.a.	n.a.	n.a.	n.a.	n.a.	n.a.
Wireless charging	✓	✓	n.a.	n.a.	n.a.	n.a.	n.a.	n.a.	n.a.	n.a.	n.a.	n.a.	n.a.
Built in Hot Keys													
Disable/enable microphone mute motion control (F2+F4, 5s)	✓	✓	✓	✓	✓	✓	✓	✓	✓	✓	-	-	-
Disable/enable mouse functions (left+right mouse button, 5s)	✓	✓	✓	✓	✓	✓	✓	✓	✓	✓	✓	✓	✓
Button mode switch (EOL+INS/OVR, 3s + button selection)	✓	✓	✓	✓	✓	✓	✓	✓	✓	✓	-	-	-
SpeechMike 2 operation mode toggle (F1+F3, 5s)	-	-	✓	✓	✓	✓	✓	✓	✓	✓	✓	✓	✓

Changed options compared to the predecessor firmware are written in **brown characters**.

Back to [Table of contents](#)

AVAILABILITY

- The new firmware versions for the SpeechMike Premium LFH3500/3600 series (FW2.60) and for the SpeechMike Premium Touch SMP3700/3800 series (FW3.50) will be available for download from week 35/'18 onwards.
- The new firmware version for the SpeechMike Premium Air SMP4000 series (FW4.50) is scheduled to be available for download from week 37/'18 onwards.
- The new SpeechControl software versions are available for download from week 35/'18 onwards.

SPEECHMIKE FIRMWARE DOWNLOADS

You can download the firmware from the following links below.

SpeechMike Premium LFH3500/3600 series:

www.speechmike.com/premium/support

SpeechMike Premium Touch SMP3700/3800 series:

www.speechmike.com/premium-touch/support

SpeechMike Premium Air SMP4000 series:

www.speechmike.com/premium-air/support

SPEECHCONTROL SOFTWARE DOWNLOADS

You can download the latest SpeechControl software (Windows or Mac edition) from the following link:

www.dictation.philips.com/speechcontrol

PACKAGED PRODUCTS WITH NEW FIRMWARE

The first products on stock equipped with the new firmware are envisaged for end of September 2018 depending on the first-in, first-out policy.

Note: Products on stock will not be reworked.

Back to [Table of contents](#)

ACRONYMS AND ABBREVIATIONS

BC	B arcode
EOL	E nd o f L etter
DNS	D ragon N aturally S peaking
DPM	D igital P ocket M emo
LED	L ight E mitting D iode
SPS	S peech P rocessing S olutions
SDK	S oftware D evelopment K it
SM	S peech M ike
UI	U ser I nterface
USB	U niversal S erial B us

Back to [Table of contents](#)

August 2018

Doc. No: SPS_T_2300/18058

Author: Wolfgang Spannlang

Philips and the Philips' Shield Emblem are registered trademarks of Koninklijke Philips Electronics N.V. and are used by Speech Processing Solutions GmbH under license from Koninklijke Philips Electronics N.V.

Dragon NaturallySpeaking is a trademark of Nuance, Inc. and is used here under license.

All other trademarks are the property of their respective owners.

© 2018 Speech Processing Solutions GmbH. All rights reserved. Errors and omissions excepted