



Options for Independent Living for Adults with Developmental Disabilities



The Issue:

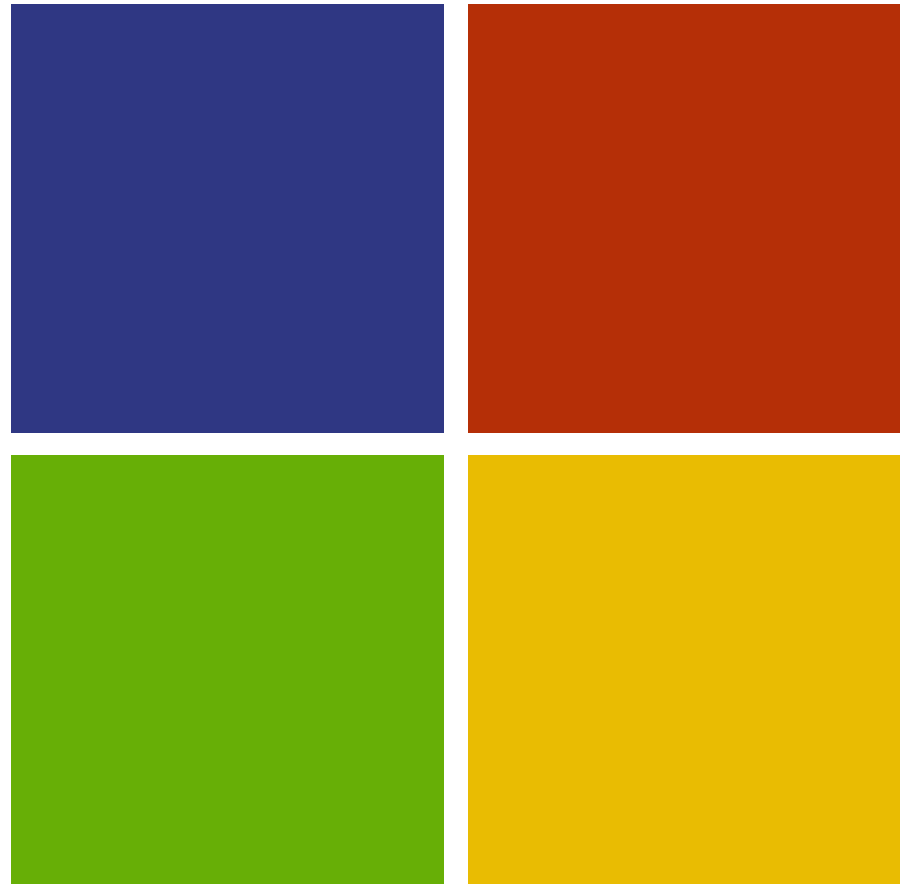
- Across the U.S., over 715,000 people with developmental disabilities live with aging parents.
- In general, approximately 70% of adults with IDD reside with family members.
- A substantial body of research shows that family members who provide care to individuals with chronic or disabling conditions are themselves at risk.
 - Emotional, mental, and physical health problems arise from complex caregiving situations and the strains of caring for frail or disabled relatives
 - National statistics provided by the Family Caregiver Alliance report that 40% to 70% of family caregivers have clinically significant symptoms of depression.
 - Depressed caregivers are more likely to have coexisting anxiety disorders, substance abuse or dependence, and chronic disease.



Other Considerations



- States are trying to exit from State run care facilities
- Federal and State budgets continue to be stressed
- Growing numbers of affected individuals does not match with declining budgets
- Families are having to bear the responsibility
- The government will not solve this problem
- Conclusion: The only people who will be able to solve this dilemma are those of us who face it.



Modern Living Services, a small but determined group of parents and relatives of individuals with DD, seeks to provide housing, life skills and educational resources to developmentally disabled individuals in Benton and Franklin Counties in WA.



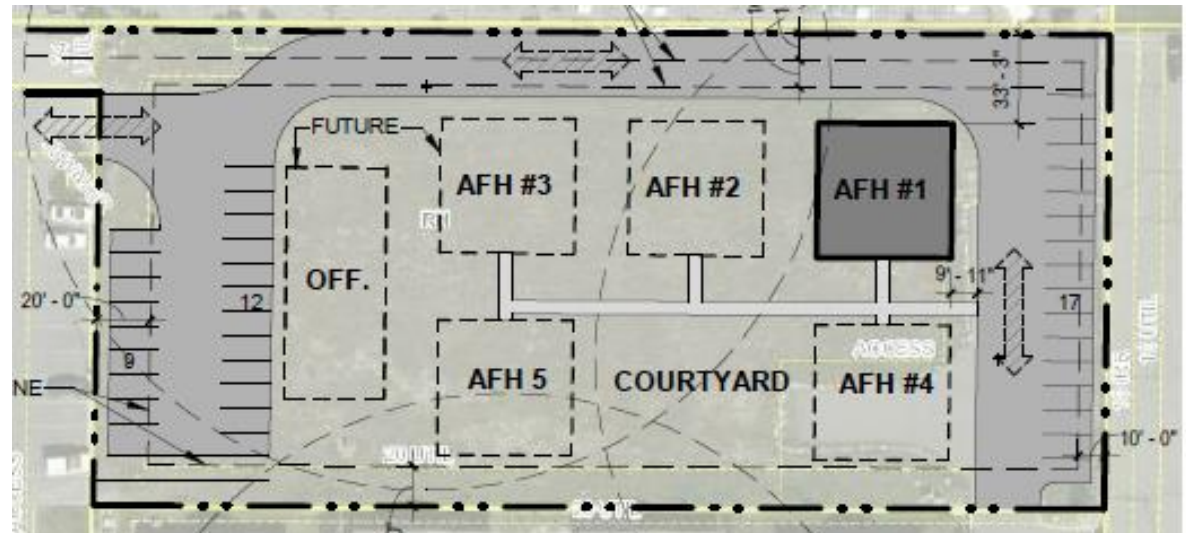
Our First Major Project - 2014

- ✧ Kennewick Perry Suites Grand Opening!
- ✧ HUD 811 Financed Project
- ✧ 14 DD Adults in Long-Term Affordable Housing, each in an independent unit
- ✧ Community Garden



What's next?

- We have a 1.7 acre plot of land with the proper zoning
- We have a concept for a Group Family Home complex
 - Up to 5 homes and a central office/rec facility
- Each home would house up to 6 residents
- Full time live-in caregiver subsidized by State program funds

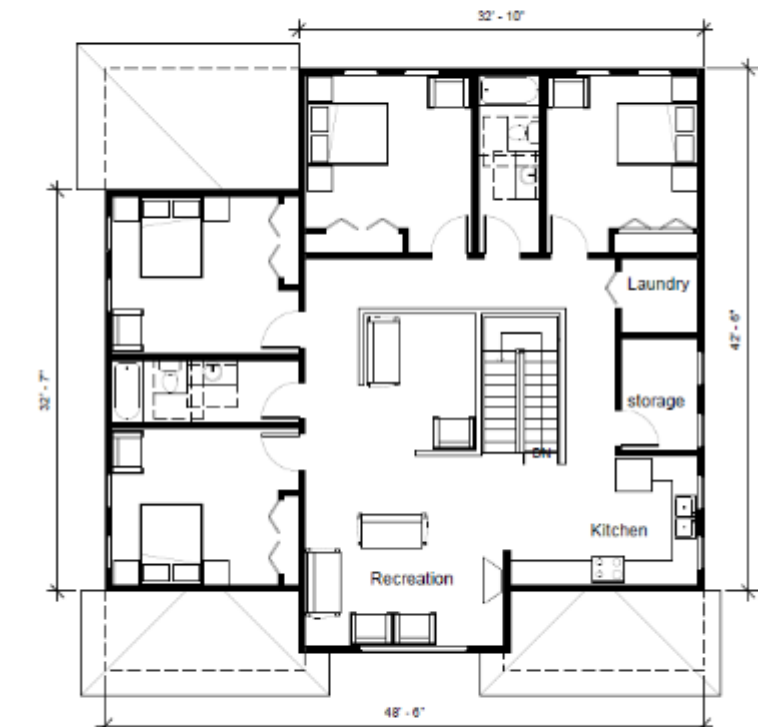




Group Family Home Floor Plan



LEVEL 1 SCALE: 1/8" = 1'-0"



LEVEL 2 SCALE: 1/8" = 1'-0"

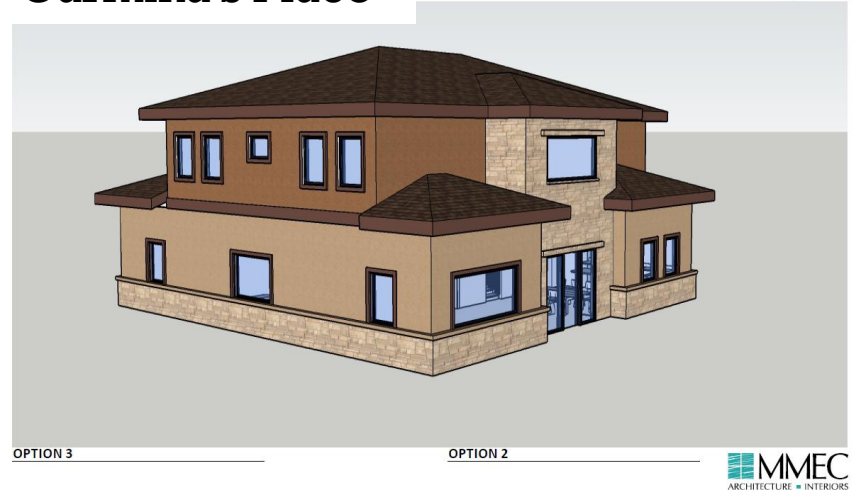




How do we get it built?

- We have ~\$100K seed money
- We have a home design
- We have the experience
- How do you get funding??
 - HUD 811 program changes
 - HUD HOME program was deemed not a fit
 - Grant application to the Federal Home Loan Bank of Des Moines – looks promising for \$240K!

Carmina's Place





Group Discussion



- What experiences do people here today have?
- What has been successful?
- How important is this concept to the group?