

Post Secondary Education: Finding the Right Fit



THE CHROMOSOME 18

REGISTRY & RESEARCH SOCIETY

Chris Wright
Director of Admissions/Financial Aid
Shepherds College

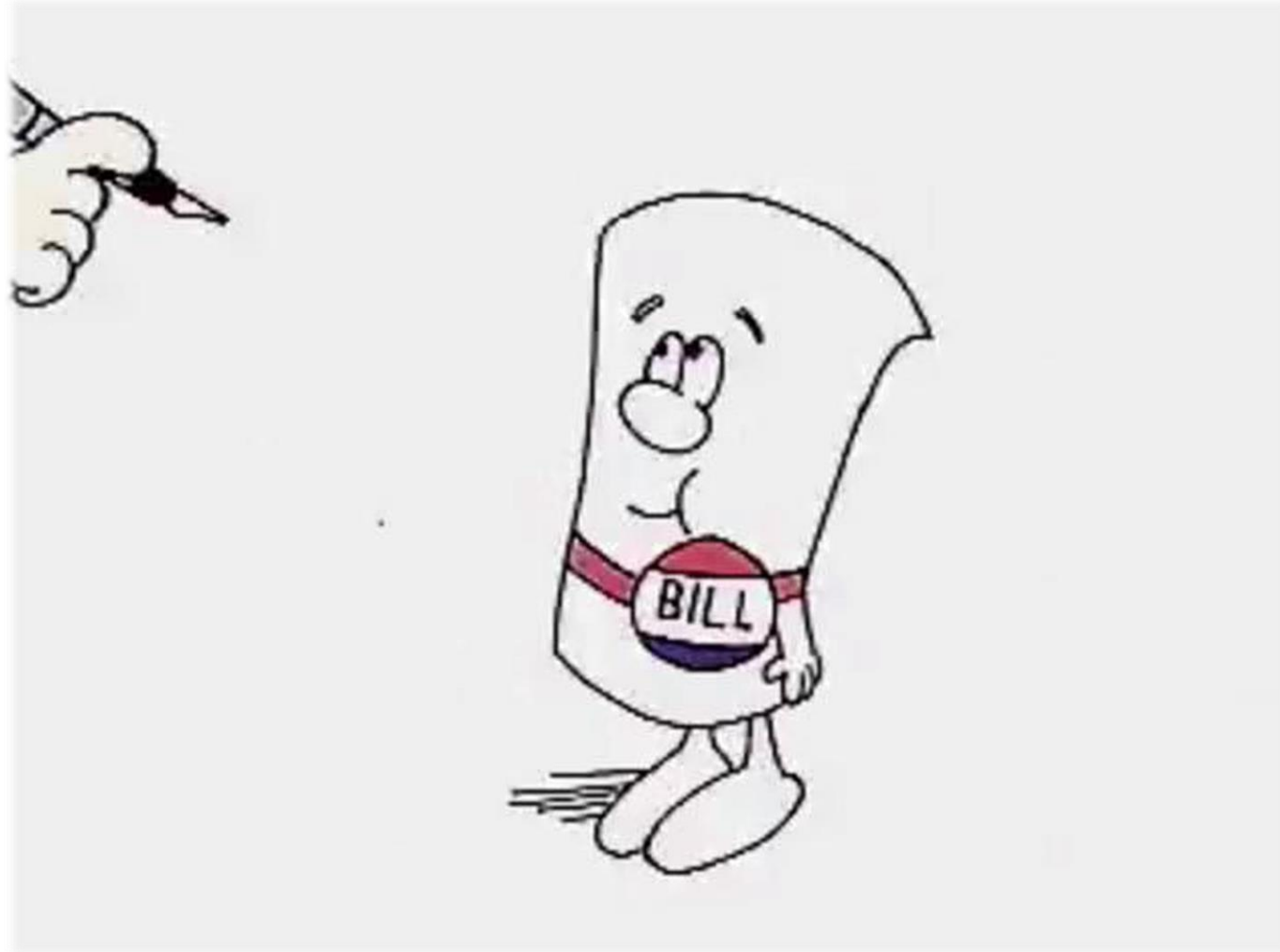


From Dream to Reality



Historical Changes to Education

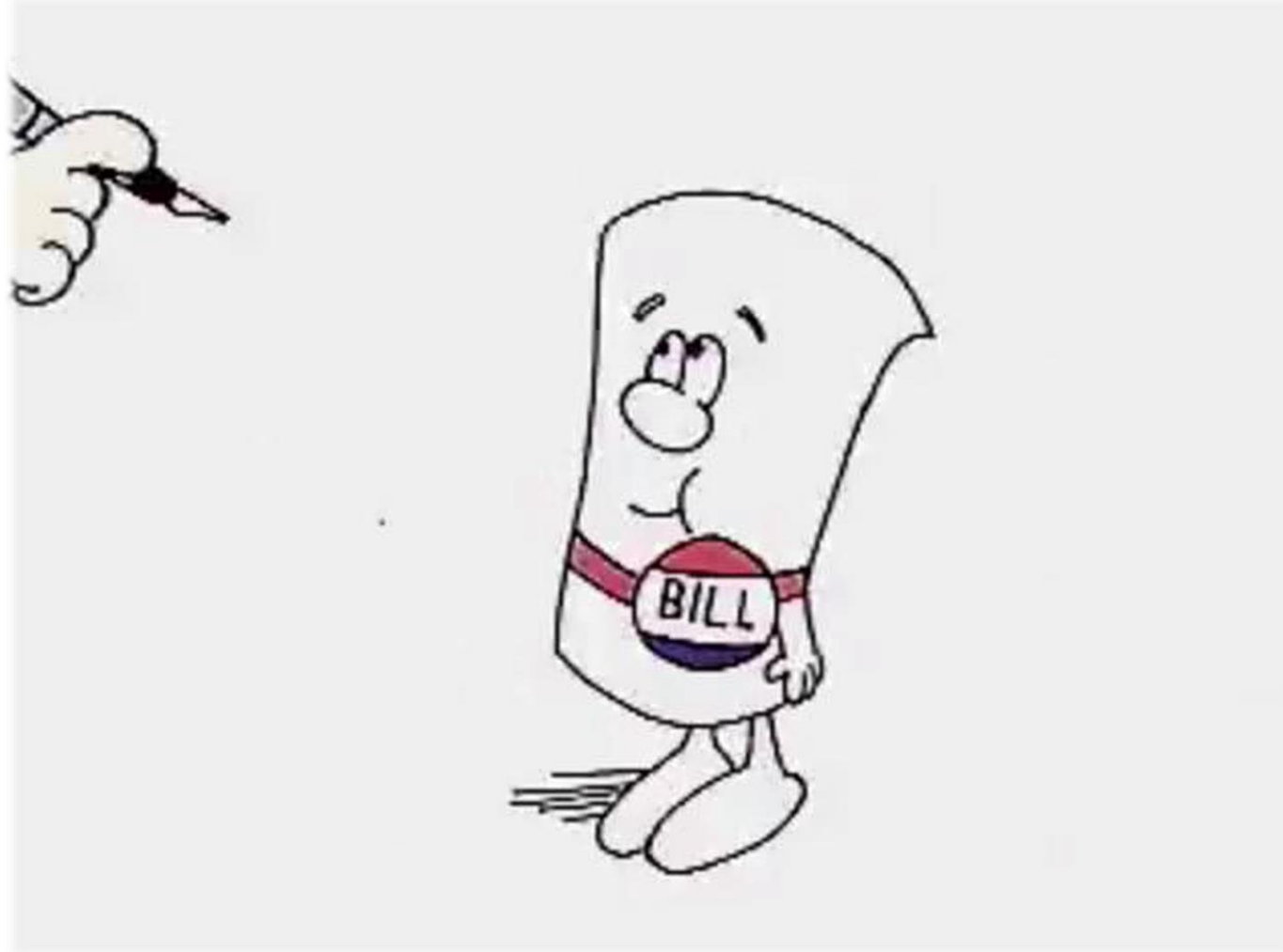
- 1965
- 1975





Historical Changes to Education

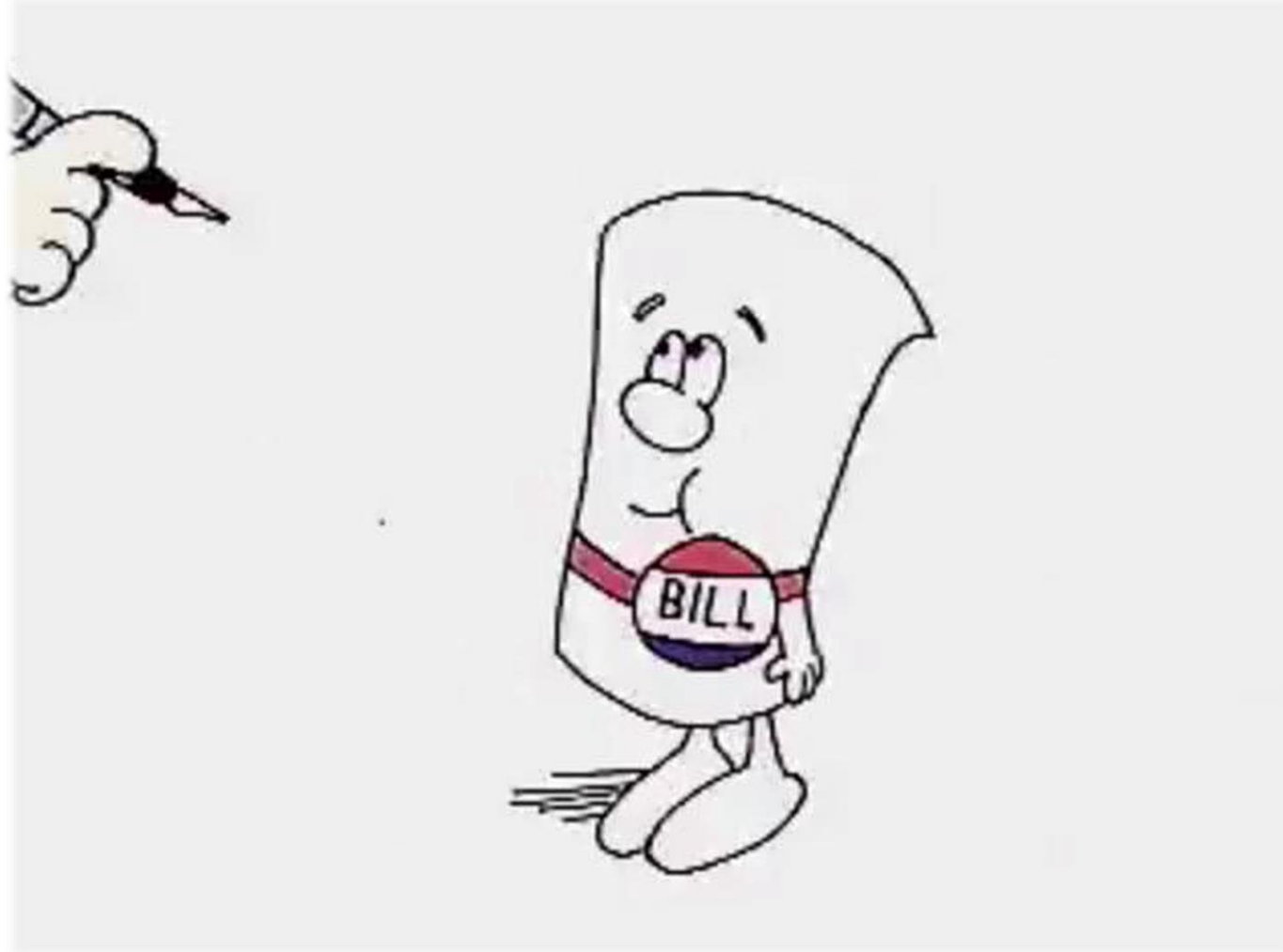
- 1965
Elem. and
Secondary
Education
Act





Historical Changes to Education

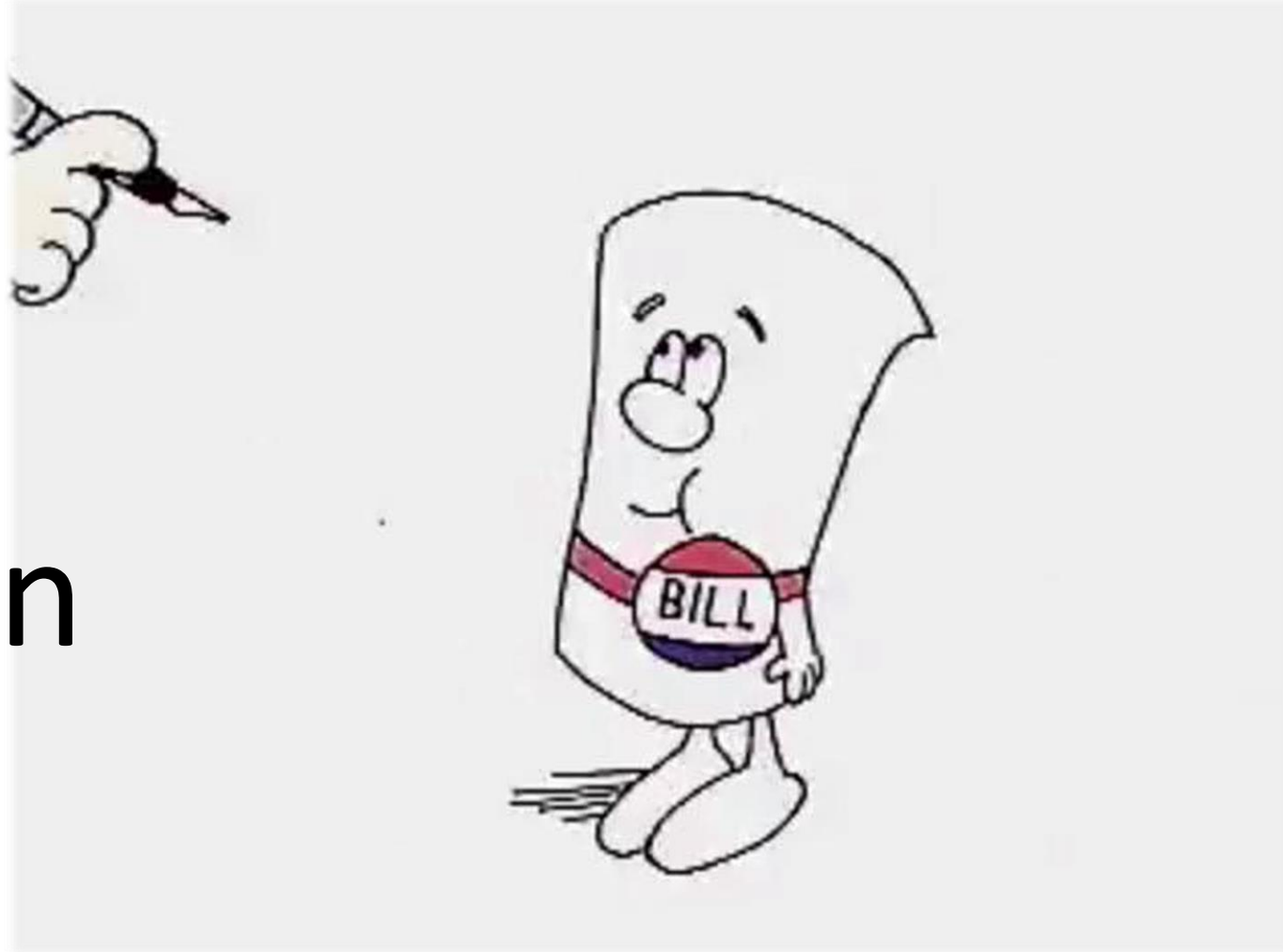
- 1975
EHA/IDEA
Act Passed





Historical Changes to Education

- 2008 Higher Education Reauthorization



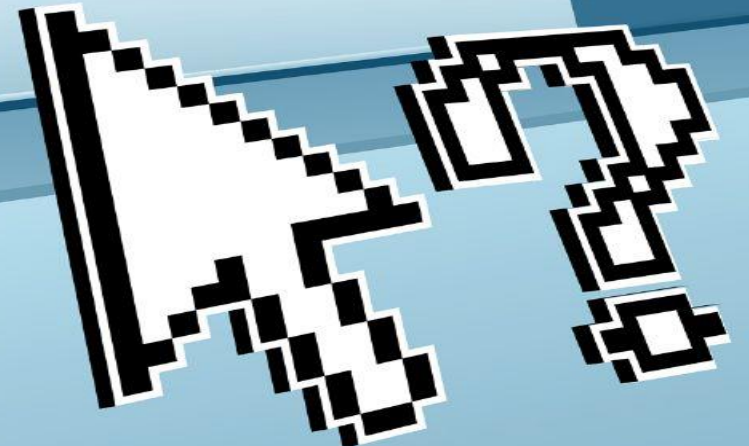


Finding the Right Fit



What is out there?

Search now...



COLLEGE OPTIONS FOR PEOPLE WITH INTELLECTUAL DISABILITIES, MARCH 2016 (N=246)



think college!

WWW.THINKCOLLEGE.NET

Understanding the Alphabet Soup

T

P

S

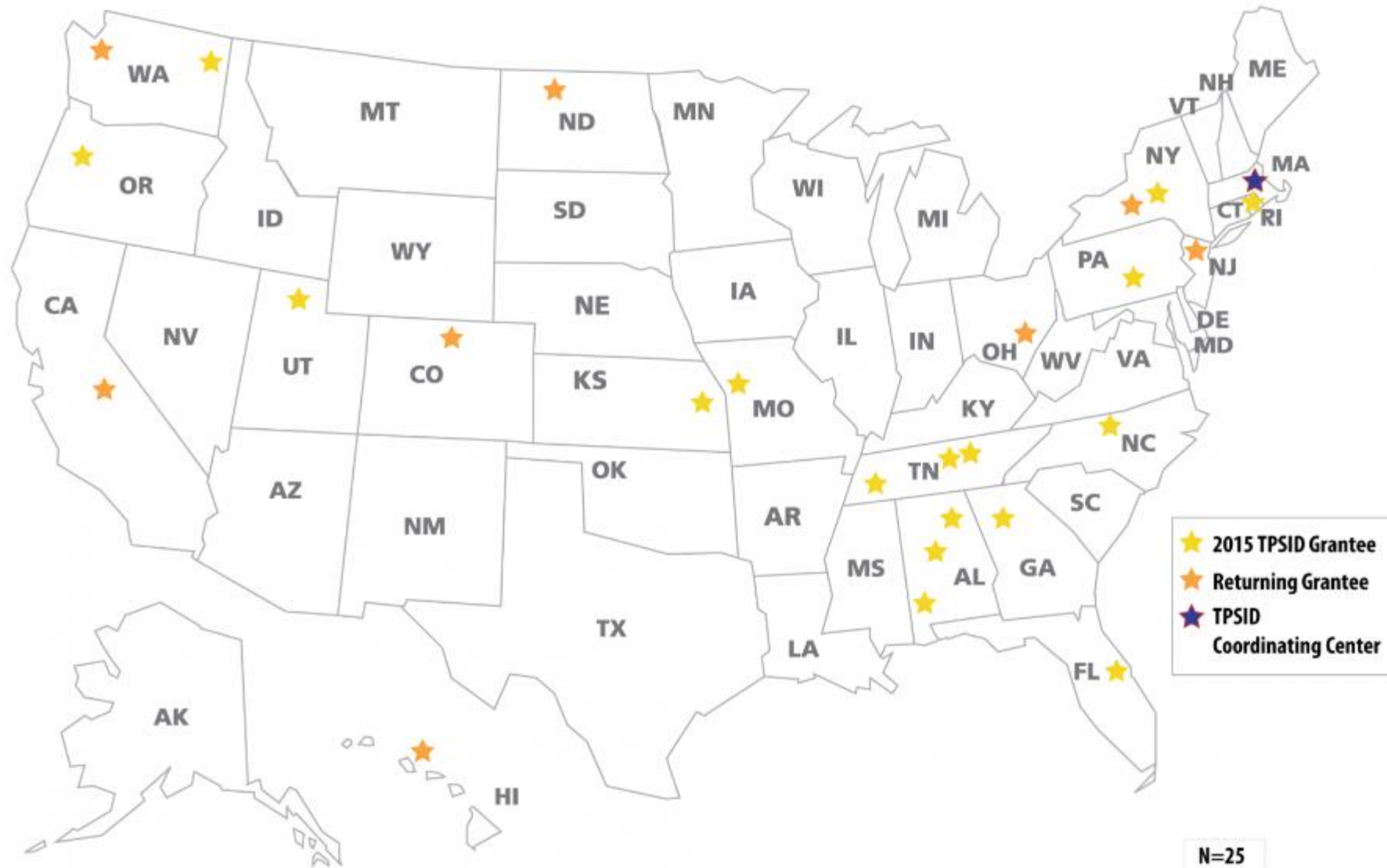
I

D

Understanding the Alphabet Soup

Transition and
Postsecondary Programs for
Students with
Intellectual
Disabilities

TPSID Grantees 2015-2020



Understanding the Alphabet Soup

C

T

P

Understanding the Alphabet Soup

Comprehensive
Transition
Programs

Inclusive Individual Support

Mixed Hybrid

Specialized

Inclusive Individual Support



EDGEWOOD COLLEGE

[APPLY](#) | [REQUEST INFORMATION](#) | [VISIT](#) | [GIVE](#)

[PROSPECTIVE STUDENTS](#)

[ABOUT](#)

[ACADEMICS](#)

[ALUMNI](#)

[CURRENT STUDENTS](#)

[PARENTS & FAMILY](#)

[VETERANS](#)



Cutting Edge Program

The Cutting Edge is an individualized approach to education and inclusion in college for students with intellectual developmental disabilities. These are individuals who have either traditionally not been able to meet the standard admissions criteria for college, or require additional supports in order to be successful in college. Edgewood College is the first four-year college in Wisconsin to offer such a program to students who have intellectual developmental disabilities. From 2007-2012, the Cutting Edge program has supported 32 students with the opportunity to attend college by attending required/undergraduate courses, practicums and internships, student housing, and learning with a peer mentors by engaging in student-life events, as well as pursuing community service.

Required courses for all Cutting Edge students are the *Resource Seminar*, *Safety in the Community*, and *Friends, Dating, and Your Place in a Diverse Community*. As well as the required Cutting Edge courses, students have the option to enroll in general Edgewood College courses.

Practicums and internships are focused to build skills that lead to employment. Participating students are supervised and receive immediate feedback on attendance, compliance with work procedures, customer service, and professionalism. To place a high importance on learning employment skills, the first internship students experience is the Sonderegger Coffee Cart.

Student Housing integrates a balance of academics, socialization, self-determination, and independent living. The Cutting Edge program has mixture of on-campus and off-campus housing available. Each housing arrangement is supported by a housing peer mentor that facilitates the balance of independent living.

Peer Mentors are drawn from volunteers around numerous areas of the campus. The Special Education graduate students from 600 level courses serve as Study Skill Peer Mentors. These peer mentors meet weekly with Cutting Edge students to assist with academic and social situations, including: help with coursework; problem-solving daily schedules and needs. Undergraduate students serve as In-Class Peer Mentors and Social Peer Mentors. This is an excellent way for the Cutting Edge students to break into the social networks already on campus and in the community.

The Alumni of the Cutting Edge has reached 35 students that have completed the program. Of the 35 alumni, 70% are employed since leaving Edgewood College and 40% are continuing to pursue higher education.

Open House & Inclusion Fair

Friday, March 11, 2016

8:30am	Check-in
9-10am	Presentation of Program
10-11am	Questions and Answers
11-12pm	Tour of Edgewood Campus
12-1pm	Lunch provided by the Cutting Edge
1-2:30pm	Individual Meetings with Cutting-Edge Staff

[RSVP for Open House](#)

COLLEGE INFO



Mixed Hybrid

[SERVICES](#)[LOCATIONS](#)[CAREERS](#)[LATEST NEWS](#)[GET INVOLVED](#)[DONATE](#) [Q](#)  **MENU**

EDUCATIONAL SUPPORTS

Educational Supports

Through our partnership with Concordia University Wisconsin (CUW), we offer people with intellectual and developmental disabilities the opportunity to live the campus experience and pursue a higher education.



Specialized

[about us](#) • [our program](#) • [admissions](#) • [campus life](#) • [news](#) • [contact us](#) • [store](#)

ShepherdsCollege
*Guiding Your Transition to
Appropriate Independence™*

**Shepherds College is the country's
leading three-year post-secondary
educational program for students with
intellectual disabilities.**

That's who we are. But what's more important is who *you* are. What are your goals and dreams for the future? Shepherds College can help achieve and even expand those goals. We offer career skills, a smooth transition to Appropriate Independence and a lasting awareness of God and His plan for your life.

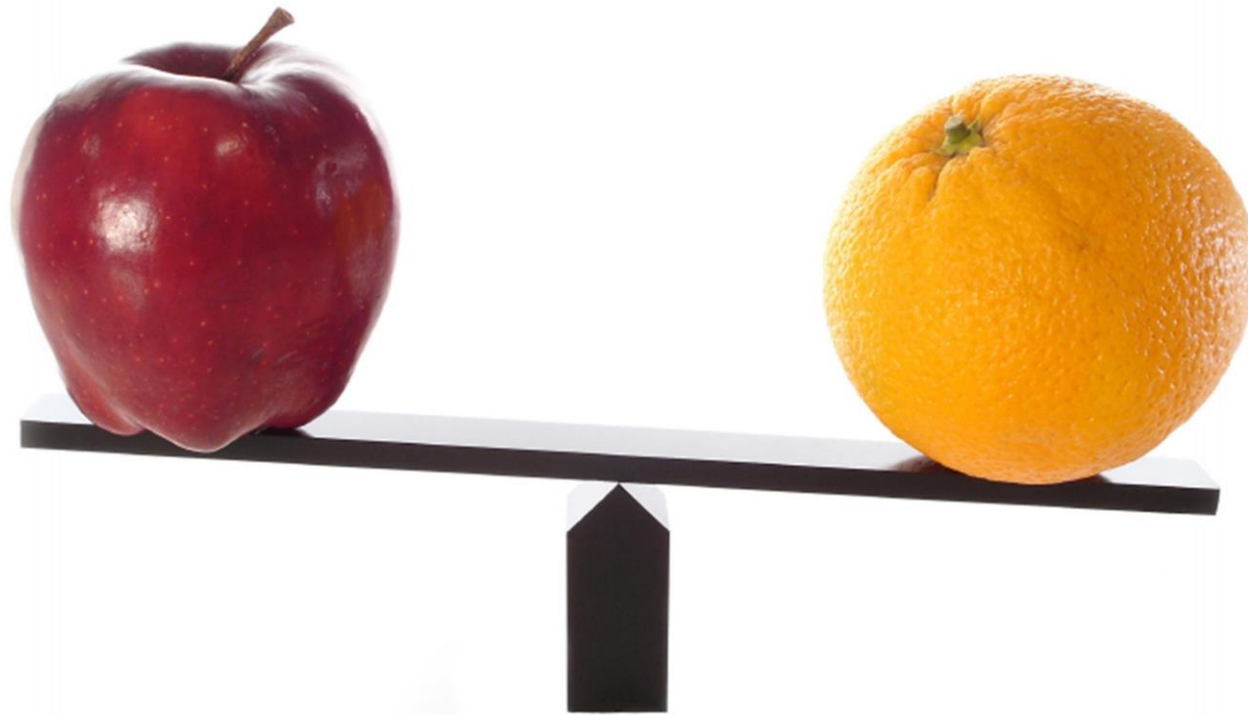
[parents](#)

[students](#)

[professionals](#)



Where do we start comparing



Two Studies to consider

- Think College annual reports
- Study by Eric Moore (2014)

Eric Moore Study

- Published in 2014 while at Grand Valley State University
- Goal to compare programs and their outcomes
- Compared and integrated program, specialized program and a group of non-attenders

Hypothesis:

Integrated Post-secondary schools would provide the greatest outcomes for students.

Eric Moore Study

Category	Integrated	Specialized	Control
Employment Rate	73%	91%	37%
Per Hour/Rate	\$10.50 (19hrs/wk)	\$8.50 (26hrs/wk)	\$8.75(29hrs/wk)

Eric Moore Study

The findings of this study suggest that the discrepancy between the two programs may be less substantial than hypothesized. In other words, attendance in employment focused PSE programs may have similar benefits for individuals with ID, regardless of the degree of integration that the program offers.

- Eric Moore

Think College Report

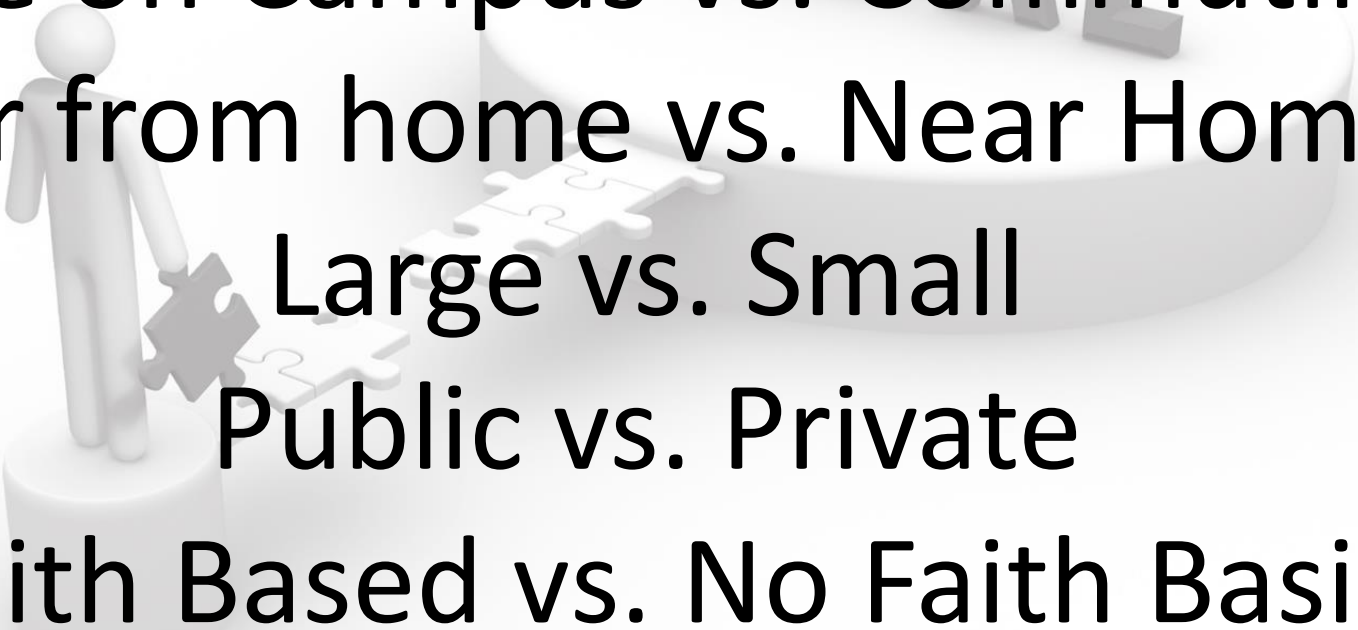
- TPSIDs only
- About 50% of graduates employed to some degree (37% paid and 13% paid/unpaid)

(Moore study: Integrated 73% Specialized 91%)

Shepherds College

- 89% overall employment rate
- Over 75% of grads employed in their field.

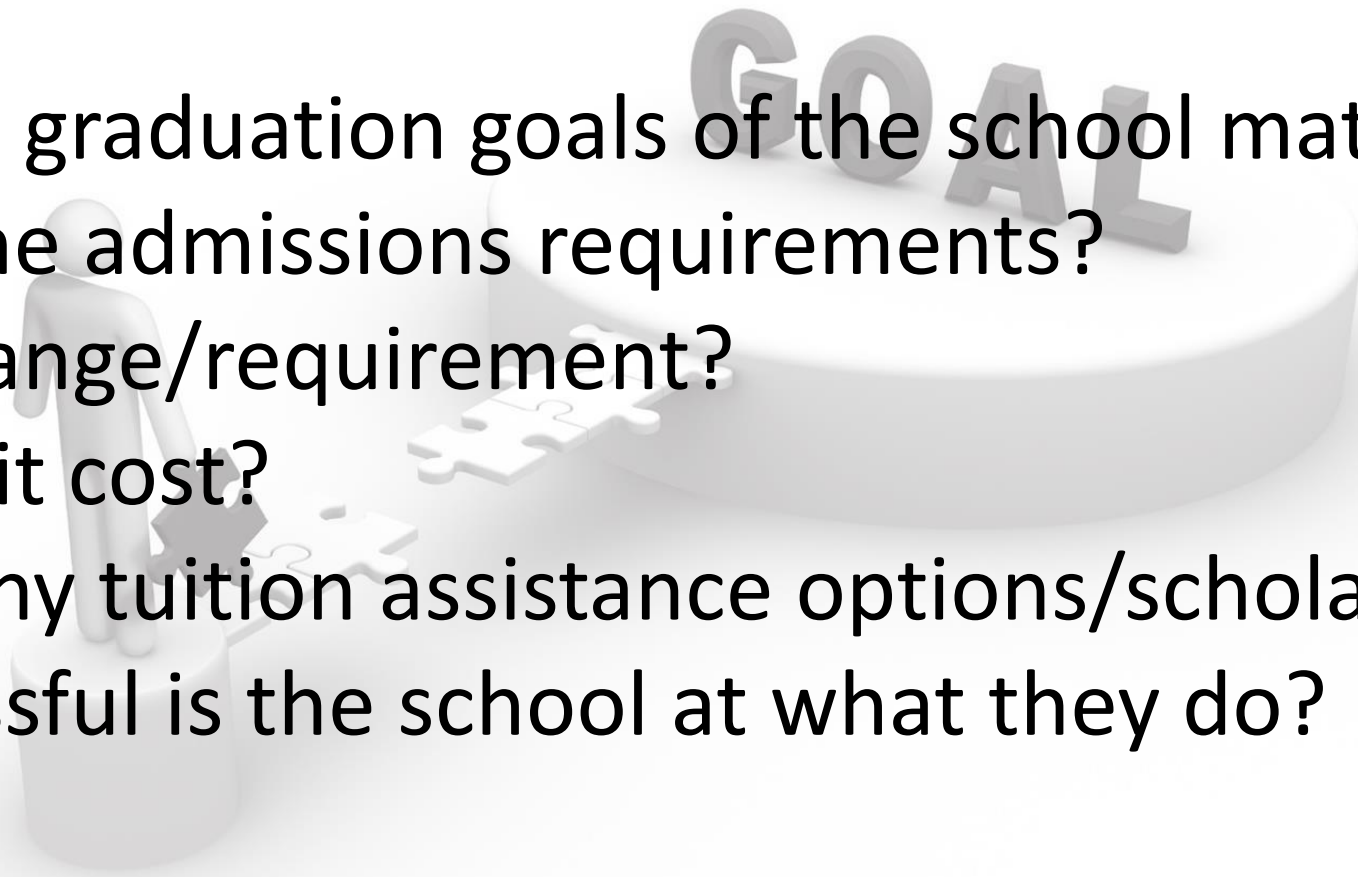




General Training vs. Specific Career
Live on Campus vs. Commuting
Far from home vs. Near Home
Large vs. Small
Public vs. Private
Faith Based vs. No Faith Basis

Key Questions

- Do the post graduation goals of the school match mine?
- What are the admissions requirements?
- Is the age range/requirement?
- What does it cost?
- Are there any tuition assistance options/scholarships?
- How successful is the school at what they do?

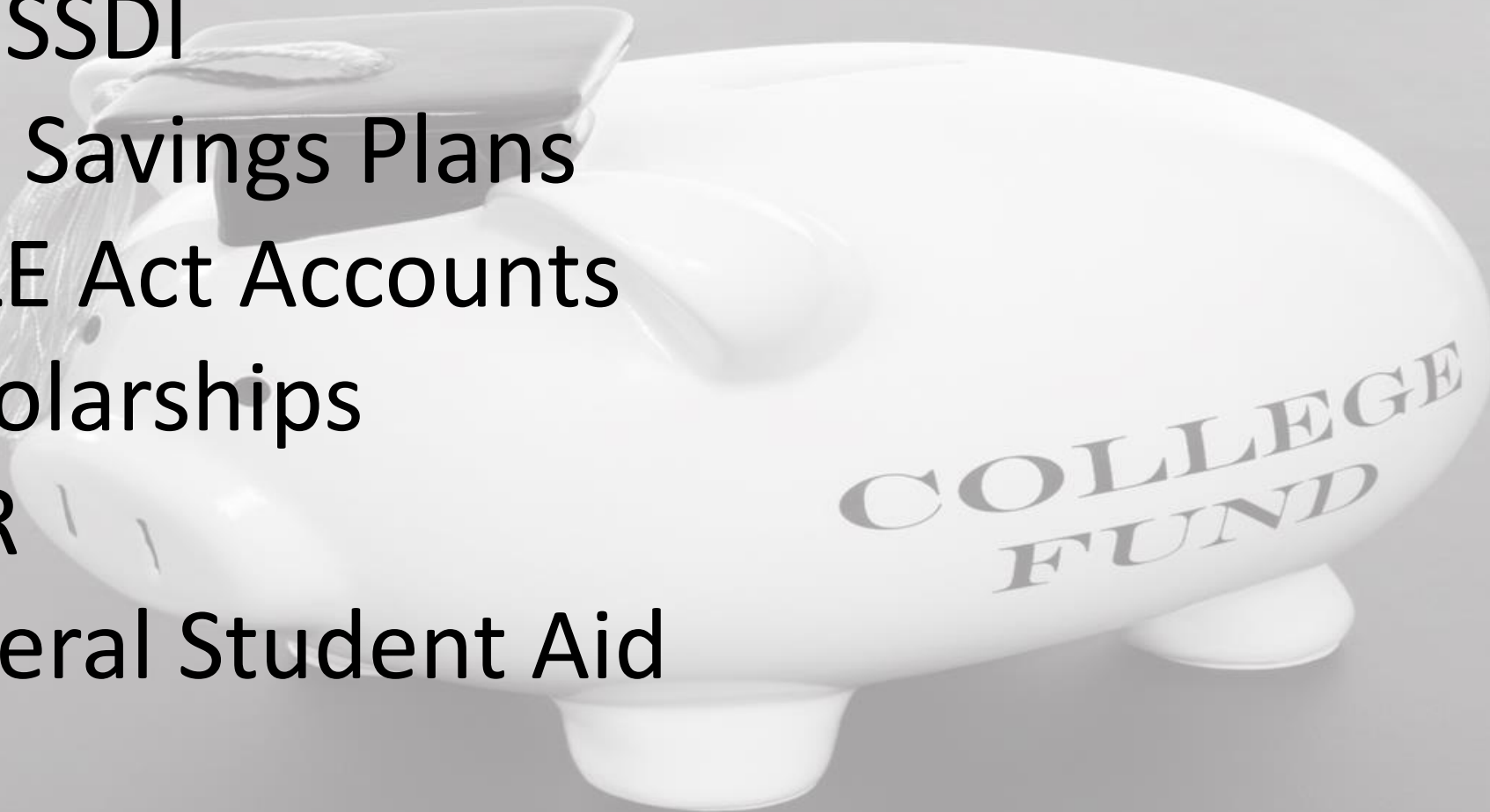


Paying for School



Paying for School

- SSI/SSDI
- 529 Savings Plans
- ABLE Act Accounts
- Scholarships
- DVR
- Federal Student Aid



Contact Info

Chris Wright

262-878-6351

cwright@shepherdscollege.edu

