



TEMPLE EMANU-EL

Providence, Rhode Island | 2017–5778

Sh'mini Atzeret

October 12, 2017 | 22 Tishrei 5778

Etz Hayim, Page 1075

1st Aliyah	Deuteronomy Chapter 14	verses 22–29
2nd Aliyah	Deuteronomy Chapter 15	verses 1–18
3rd Aliyah	Deuteronomy Chapter 16	verses 19–3
4th Aliyah	verses 4–8
5th Aliyah	verses 9–14
Maftir	Numbers 29:35–30:1	Page 936
Haftarah	1 Kings 8:54–8:66	Page 1263

Simhat Torah

October 13, 2017 | 23 Tishrei 5778

Etz Hayim, Page 1202

1st Aliyah	Deuteronomy Chapter 33	verses 1–7
2nd Aliyah	verses 8–12
3rd Aliyah	verses 13–17
4th Aliyah	verses 18–21
5th Aliyah	verses 22–26
Maftir	Numbers 29:35–30:1	Page 936
Haftarah	Joshua 1:1–1:18	Page 1266

Parashat B'reishit

פרשת בראשית

October 14, 2017 | 24 Tishrei 5778

Etz Hayim, Page 538

1st Aliyah	Genesis Chapter 2	verses 4–9
2nd Aliyah	verses 10–19
3rd Aliyah	verses 20–25
4th Aliyah	Genesis Chapter 3	verses 1–21
5th Aliyah	verses 22–24
6th Aliyah	Genesis Chapter 4	verses 1–18
7th Aliyah	verses 19–26
Maftir	Genesis 4:23–4:26	Page 29
Haftarah	Isaiah 42:5–43:10	Page 36

Minhah/Ma'ariv Service – 6:00 p.m.

Havdalah – 6:47 p.m.

Thank you to Dr. Richard Kumins for donating to this Friday's Kiddush in honor of his wife, Bernice Kumins, who is the Simhat Torah Kallat Maftir honoree.

Sh'mini Atzeret & Simhat Torah Services

Wednesday, October 11

5:45 PM Minhah/Ma'ariv – *Fishbein Chapel*

Thursday, October 12

9:30 AM Shaharit – *Main Sanctuary*

11:00 AM Yizkor – *Main Sanctuary*

5:45 PM Family First Simhat Torah Program – *Bohnen Vestry*

6:00 PM Minhah – *Main Sanctuary*

6:20 PM Ma'ariv – *Main Sanctuary*

6:35 PM Hakafot – *Main Sanctuary*

The Youth Ice Cream Party will be in the Youth Lounge following services.

Friday, October 13

9:15AM Shaharit – *Main Sanctuary*

12:15 PM Congregational Lunch – *Alperin Meeting House*

5:45 PM Minhah/Ma'ariv – *Fishbein Chapel*

This year's Simhat Torah honorees are:

Judie Tenenbaum – *Kallat HaTorah*

Morty Miller – *Hatan Bereishit*

Bernice Kumins – *Kallat Maftir*



Announcements

Koffler Bornstein Families Institute of Jewish Studies

The Fall Semester will begin on Tuesday, October 17, however, Rabbi Wayne Franklin's "Talmud" class will not begin until October 24. To register, please visit teprov.org/institute, or call the Temple Office 401.331.1616. You may also register at our Fall Semester Kick-Off on Tuesday, October 17 at 7:00 PM.

Shabbat Chai Returns For An 8th Season!

Our family-friendly format continues! Lively singing, fabulous musicians, and a warm welcome for Shabbat—all in one hour—and dinner if you wish. Everyone is welcome!

The first service will be on November 3rd.

Other dates: December 1, February 2, March 2, & May 4

"Pre-neg" with snacks is available at 5:45 PM. The one hour service begins at 6:00 PM. Dinner if you wish; be our guest! Donations are encouraged. Young children will love the service and music! The activity room will also be open during service and dinner.



Friday Evening Chapel Service

Traditional Kabbalat Shabbat Services are held every Friday night at 5:45 p.m. in the Fishbein Chapel, including Fridays when Shabbat Chai is scheduled.

Greeters Needed for Upcoming Year

If you would like to be a greeter at service for the upcoming year, please email Marilyn Katz at katz288@verizon.net.

New Temple Website

Be sure to log in to your account on our updated website: **www.teprov.org**. Please add to or correct your personal information on your page. If you have any questions, contact Paul Stouber at 401.331.1616 or by email: pstouber@teprov.org

Conversion to Judaism Classes

Do you know anyone who may be considering converting to Judaism? Though classes have begun, registration is still open. Please contact Rabbi Franklin or the Temple Office at 401.331.1616

Visit Temple Emanu-El's Rosen Library

Visit Temple Emanu-El's Rosen Library! New books every month! Open every day. Check out our online library catalog (<http://tee.hl.scoolaid.net>), or contact the librarian (jjasper@teprov.org) for help finding the perfect book for you!

Support Emanu-El

Bring your East Side Marketplace receipts to the Temple. We receive 1% of all receipts. Last year we raised over \$2,000 for the Temple! You can also support the Temple by shopping on amazon.com. Simply go to smile.amazon.com, search for Temple Emanu-El in Providence, RI, and start shopping. There are no added fees!

At Temple Emanu-El, we seek to fashion an atmosphere of peace and tranquility on the Sabbath. To help create this environment throughout the Temple, we refrain from writing, taking photographs, texting, and using cell phones. Please join us in observing these traditions as we make Shabbat a sacred experience for us all.



The Koffler Bornstein Families Institute of Jewish Studies

For detailed course descriptions, biographical information on instructors, and to register, please visit teprov.org/institute or call the Temple Office at 401.331.1616

You may also register at our Fall Semester Kick-Off on Tuesday, October 17 at 7:00pm

Course fees are \$36 per course / \$25 for seniors and students

We are committed to making our courses accessible to everyone. If the course fees present a financial hardship, please contact Rabbi Rachel Zerin at 401.331.1616 or rzerin@teprov.org

Talmud

**Tuesdays, October 24—December 12
and February 20—April 3 · 7:30-9:00pm**

This year, we will examine the Talmud's laws regarding robbery as they appear in Chapter 10 of Baba Kamma. All are welcome; prior Talmud study is not required.

Instructor: Rabbi Wayne Franklin

Dressing the Part

**Tuesdays, October 17—December 12
and February 20—April 3 · 7:30-9:00pm**

Come and explore the why, what, who, how, when, and where of kippah, tallit, tefillin, Shabbat dress, kittels, modesty laws, and other elements of Jewish dress.

Instructor: Rabbi Rachel Zerin

Hug Ivri

**Every other Thursday · 9:00-10:00am
(e-mail akaunfer@cox.net for schedule)**

This group, conducted entirely in Hebrew, will be continuing its study and discussion of Sefer Sh'muel. All advanced Hebrew speakers are invited to join!

Instructor: Rabbi Alvan H. Kaunfer

Parashat HaShavua

Every Friday, beginning October 20 · 7:45-8:35am

In this breakfast-study session, we will study and discuss highlights of the upcoming Shabbat Torah reading.

Instructor: Rabbi Alvan H. Kaunfer

Chanting Haftarah*

Sundays, November 12, 19 and December 3 · 10:00am

Do you already know how to read Torah, but want to expand your skills? Join Paul Stouber for a light breakfast and a chance to learn the special melodies used to chant Haftarah.

Instructor: Paul Stouber

*Program will run pending sufficient enrollment

NEW Lecture Series

Thursday, October 26 · 7:30pm · Rabbi Dan Judson

"Pennies for Heaven: A Brief but Fascinating Look at the History of American Synagogues and Money"

Sunday, November 19 · 7:30pm · Shai Afsai

"Uman: Pilgrimage and Prayer"

FAMILY FIRST SIMHAT TORAH CELEBRATION

Thursday, October 12 - 5:30 PM
Starting in the Bohnen Vestry

Crafts
Ice Cream Sundaes
Dancing with the Torahs
(Hakafot)



SIMHAT TORAH ICE CREAM PARTY FOR YOUTH IN GRADES 3-12

JOIN US AS WE CELEBRATE SIMHAT TORAH
WITH SINGING & DANCING FOLLOWED
BY AN ICE CREAM SUNDAE PARTY

WHEN: OCTOBER 12

TIME: 6:35 - 8:30 PM

WHERE: TEMPLE EMANU-EL



"JOYOUS!"

ALMA GHURON, DIRECTOR



The WOMEN'S BALCONY

שלמה חתני



A FILM BY SHLOMIT NEHAMA AND EMIL BEN-SHIMON



Temple Emanu-El
Oct 21 – 7:30 PM

99 Taft Avenue
Providence 02906

\$12 – Online Pre-registration
\$15 – At the Door

teprov.org/form/thewomensbalcony.html
Refreshments will be served

Join a Discussion on
Jewish Women's Health:

Hereditary Breast & Ovarian Cancer

Breakfast and presentation, followed by Q&A



Dr. Kathryn Dalton, *Speaker*

Medical Director and General Surgeon

Cape Cod Women's Health Program and High Risk
Breast Cancer Program

Clinical speaker for Myriad Genetic Laboratories
on topics related to genetic counseling and testing

Sunday October 29 | 9:00–11:00 AM
Temple Emanu-El Bohnen Vestry
99 Taft Ave, Providence, RI 02906

Reservations appreciated:
www.teprov.org/form/womenshealth

Questions? Please contact Rabbi Zerin
by calling the Temple Office: 401.331.1616
or by emailing rzerin@teprov.org



Sponsored in collaboration by:



KADIMA NINJA PARTY!



SUNDAY, OCTOBER 29, 2017

FOR KADIMA

Grades 3-5

2:30PM - 5:30PM

MEET AT TEMPLE EMANU-EL

ROCK ON ADVENTURE

661 Pleasant Street, Norwood, MA

PRICE: \$20

INCLUDES:

- ★ **ROCK CLIMBING**
- ★ **NINJA WARRIOR GAMES**
- ★ **LASER TAG**
- ★ **SNACKS**

RSVP BY: October 19th

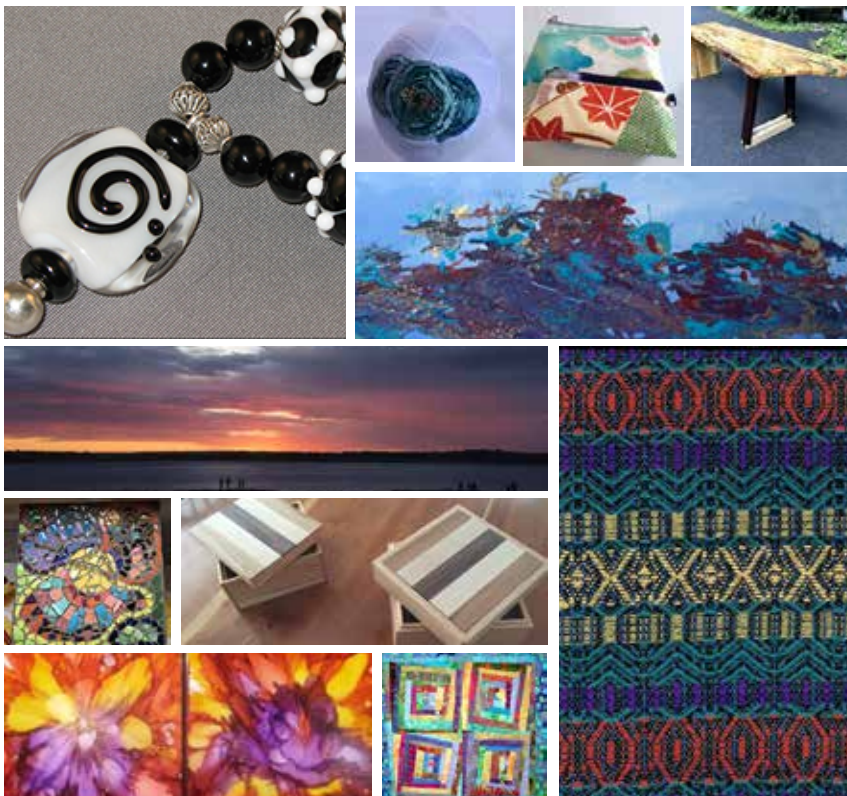


We are looking for parents to volunteer to carpool to and from the event. If a parent would like to also chaperone we will pay for the parent to participate in the ninja and other activities (if they want).

As Per Regional Policy: No Refunds!

For more information contact Shosh at shosh@teprov.org





Creative Hands Art Sale

HOSTED BY TEMPLE EMANU-EL

Now in its third year, Creative Hands is an art sale celebrating the very creative people in our community. Local and regional artists and craftspeople will be displaying and selling a variety of unique items in many media and materials, including jewelry, glass, wood, textiles, photography, painting, furniture, textiles, and Judaica. Whether you are looking for something beautiful, whimsical, practical, or just something a bit different for yourself or for a gift, you won't want to miss Creative Hands.

Admission is free.

Please help us publicize this event and make it a success by clicking "Invite Friends" and "Share in News Feed" under "Share" on the top right of the page on Facebook:

www.facebook.com/events/241491249712196

Where:

99 Taft Avenue, Providence, RI

When:

Sunday, November 5, 2017
10:00 a.m. - 4:00 p.m.

www.teprov.org/creativehands

Paws for PARL

Katrina Waldmanwerth's Bat Mitzvah Project

Hi! My name is Katrina Waldmanwerth, and lately I've been thinking a lot about the importance of caring for everyone, even the little guys. Animals are really important to me, and I decided that I would contribute to helping them and organizations that help them. I started volunteering my time at PARL, (Providence Animal Rescue League of Rhode Island), a few weeks ago. Though I'm still too young to clean cages and feed the animals, I am volunteering my time with animal enrichment. (Basically, I get to cuddle bunnies and kittens all day!)

For my Bat Mitzvah project, I am asking for donations to help PARL help even more animals in need. Please take a look at the Everyday Wish List below and see how you can contribute to PARL. Maybe YOU can also visit PARL and cuddle bunnies and kittens! **(Fun Fact: PARL had over 60 animals adopted in August!)**

Dogs Needs:

- »Wet dog food
(*regular & grain free*)
- »Soft training treats
- »Pig ears
- »Hot dogs/ string cheese
- »Poop bags

Cat Needs:

- »Feliway spray
- »Cardboard scratchers
- »Wet cat food
- »Cat toys
- »Catnip
- »Yesterday's News Paper
- »Cat Litter

Small Animal Needs:

- »Hay
- »Carefresh
- »Wooden/ plastic chew toys
- »Fresh veggies (*dark greens, carrots, peppers, etc.*)

General Needs:

- »Towels (*all sizes*)
- »Dawn dish soap
- »Heavy Duty Zip ties
- »Duct tape
- »Blankets
- »Paper Towels
- »Even more needs can be found at:
www.parl.org/get-involved/wish-list

There is a box for donations at the Temple Office. Thank you!

FOR MY BAT MITZVAH PROJECT I AM COLLECTING CHILDREN'S BOOKS FOR **BOOKS ARE WINGS**. THEIR MISSION IS TO PUT FREE BOOKS IN THE HANDS OF CHILDREN. LAST YEAR THEY WERE ABLE TO GIVE OUT OVER 50,000 BOOKS AND I NEED YOUR HELP SO THEY CAN REACH OUT TO EVEN MORE KIDS.



NEW AND GENTLY USED BOOKS CAN BE PLACED IN THE BOX OUTSIDE THE TEMPLE OFFICE. BOOKS CAN BE FOR INFANTS, TODDLERS AND KIDS UP THROUGH MIDDLE SCHOOL.

THANK YOU FOR YOUR HELP AND FOR LETTING KIDS EXPERIENCE THE JOY OF READING!!

**JULIA MASRI
GRADE 7 - NATHAN BISHOP**



Temple Emanu-El

Robert Pelcovits

President

Rabbi Wayne M. Franklin

Rabbi Rachel Zerin

Cantor Brian J. Mayer

Rabbi Alvan H. Kaunfer

Rabbi Emeritus

Paul Stouber

Executive Director

Ronni Guttin

Director of Education

Shoshana Jacob

*Director of Youth and Family
Programs*

Joshua Jasper

Librarian