

TEMPLE EMANU-EL

Providence, Rhode Island | 2017–5777

Parashat Sh'mini

פרשת שמִיני

April 22, 2017 | 26 Nisan 5777

Etz Hayim, Page 630

1st Aliyah	Leviticus Chapter 9	verses 1–6
2nd Aliyah	_____	verses 7–10
3rd Aliyah	_____	verses 11–16
4th Aliyah	_____	verses 17–23
5th Aliyah	Leviticus Chapter 9 & 10	verses 24–3
6th Aliyah	_____	verses 4–7
7th Aliyah	_____	verses 8–11
Maftir	Leviticus 10:8–10:11	Page 635
Haftarah	II Samuel 6:1–7:17	Page 645

Minhah/Ma'ariv Service – 7:00 p.m.

Havdalah – 8:14 p.m.

Services this Shabbat

Sanctuary Service

Main Sanctuary

Rabbi Wayne Franklin

Rabbi Rachel Zerin

Cantor Brian Mayer

Officer: Toby Liebowitz

Tot Shabbat

Sisterhood Lounge

Marni Thompson-Tilove

Youth Minyan

Rosen Library

Samuel Gelman

Minyan Hadash

Bohnen Vestry

At Temple Emanu-El, we seek to fashion an atmosphere of peace and tranquility on the Sabbath. To help create this environment throughout the Temple, we refrain from writing, taking photographs, texting, and using cell phones. Please join us in observing these traditions as we make Shabbat a sacred experience for us all.

Shabbat morning, April 22

Temple Emanu-El will welcome Daniel Sherman, who will speak on A Jewish & Zionist Response to Today's Volatile Middle East.

Daniel Sherman is a strategic and organizational consultant focusing on peace and development issues. He served as a Senior General Staff officer in the Israel Defense Forces' Strategic Planning Division where he worked on the peace process and Israel's defense-oriented international relations (completing reserve duty with the rank of major); developed social welfare programs for disadvantaged Jewish communities in central and eastern Europe with the Joint Distribution Committee; worked on strategic planning and leadership development at the Mandel Foundation; and was International Relations Director for the Israeli human rights organization, B'Tselem, where he was responsible for engagement with diplomats and international policy makers.



Daniel recently launched Yuvalim, an innovative project that promotes peace and shared society in Israel by linking communal networks with visionary Israeli leaders and with outstanding organizations working to solve Jewish-Arab and Israeli-Palestinian conflicts. To launch Yuvalim, Daniel embarked on a 273 kilometer solo sea kayaking journey in May 2016 from Nahariyya to Ashqelon during which he met and spoke with Israelis and Palestinians about their views on peace and war.

Daniel made aliya from the United States in 1990 and lives in Modi'in, Israel with his wife and two children. In his free time, he enjoys hiking, writing and sea-kayaking.

We welcome this special opportunity to learn from someone who has been intimately involved in the peace process.

The Bielski Partisans

Honoring the Victims
Celebrating the Survivors



April 23, 4 PM -Temple Emanu-El

This year's Yom HaShoah event will remember the victims of the Holocaust and celebrate the heroism of the Bielski Partisans, who saved 1,200 Jewish lives in the forests of Belarussia between 1941-1944.

Our guest speaker will be Ruth Bielski Ehrreich, daughter of Tuvia Bielski, the leader of the Bielski Partisans, whose story was featured in the book and movie *Defiance: The Bielski Partisans*.

The Never Again Award will be presented to Herb Stern.

Announcements

New Temple Website

Be sure to log in to your account on our updated website: **www.teprov.org**. Please add to or correct your personal information on your page. If you have any questions, contact Paul Stouber at 401.331.1616 or by email: pstouber@teprov.org

Volunteer to Chant Haftarah

We are looking for volunteers to chant Haftarah in the coming months. Please contact Cantor Brian Mayer if you are interested in volunteering: bjmayer@teprov.org

Support Emanu-El

Bring your East Side Marketplace receipts to the Temple. We receive 1% of all receipts. Last year we raised over \$2,000 for the Temple!

Visit Temple Emanu-El's Rosen Library

Are you looking for a Jewish book? Visit the Rosen Library. Open on weekdays, Sundays, Shabbat, and holidays—every day!

Cross Racial Dialogue

The Gordon School is opening it's last Cross Racial Dialogue to the public. On Monday, April 24 at 6 PM, they are screening, "I Am Not Your Negro" with a facilitated Panel Discussion. Visit their website for more information:

<http://www.gordonschool.org/crossracial>

Announcements (cont.)

2017 Interfaith Poverty Conference

**RI Interfaith Coalition to Reduce Poverty - Thursday, May 11
8:00 AM - 12:30 PM, Rhode Island College, Providence, RI**

We are delighted to welcome the Rev. Dr. James A. Forbes, Jr. as our keynote speaker. Rev. Dr. Forbes is a Senior Minister Emeritus of The Riverside Church in NYC, National Minister of the Drum Major Institute, and co-leader of the Moral Revival. Rev. Forbes will bring a prophetic, prayerful, powerful voice to Rhode Island.

In addition to our keynote, we will have four workshop choices:

Immigration 101: From Refugees to Dreamers, DACA to Driver's Licenses, an Introduction to Key Immigration Issues in RI.

Fair Pay for Work: (Re)Considering RI's Minimum Wage

Racial & Economic Disparities in Education & Housing: How De Facto Segregation Functions and How It Harms Our Children

Growing Older in Community: Transportation Challenges, Food Security Issues & Isolation Risks for Low-Income Seniors

Pre-registration is required. You can buy tickets at <http://tinyurl.com/RIpoverty2017>. Reduced-price and hardship waiver tickets are also available when you "checkout" on the Eventbrite site.

Author, Author with Noah Beit-Aharon (N.S. Dolkart)

Join the Adult Institute on Monday, May 1 from 7:30-9:00pm as we welcome fantasy author Noah Beit-Aharon (N.S. Dolkart). Mr. Beit-Aharon will join us to discuss the inspirations behind his Jewish epic fantasy series, *Godserfs*, which follows five young refugees across a hostile continent. The evening will include an exploration of the themes and Jewish influences in the books, as well as a reading and Q&A. The event is free; copies of Mr. Beit-Aharon's books *Silent Hall* and *Among the Fallen* will be available for \$8 each.



Refugee Resettlement Donation Day

Sunday, April 23rd - 8:30am to 1:00pm

The Social Justice Committee asks you to help support recently resettled refugee families by donating needed household supplies.

The items most needed by families are: linens (bedding, sheets & towels); hygiene products like soap, toothpaste, womens' products, deodorant, etc.; household cleaning supplies (including tin foil & plastic wrap); diapers & baby supplies; gently used laptops to help with job searches, school & learning English; Gift Cards for gas, food and general purchases

Please bring your donations to the Taft Avenue Entrance



Refugee Resettlement Fund

"For the Lord your God is the God of gods... who loves the stranger... Therefore, you shall love the stranger, for you were strangers in the land of Egypt." Deuteronomy 10:17-19

The Temple's Social Justice Committee invites and encourages you to make a contribution of whatever amount is possible to help recently arrived refugee families meet their basic needs. Partnering with AHope our donations will be used to help offset the bills of recently arrived struggling refugee families.

You can donate from March 27 - April 28 via the Temple website or by check.

Please put "Resettlement Fund" in the subject line if donating by check.



Raise the Barre! Let's Dance for Down Syndrome!



My name is Sami Shorr and I have a friend named Gabriella Sluter (Gabby). Gabby and I share a love of ballet. We both take classes at Festival Ballet Providence and have performed twice together in FBP's "The Nutcracker." We spin, we jump, we laugh just like normal friends. *Our only difference is, Gabby has Down Syndrome.*

Gabby participates in the Adaptive Dance program at Festival Ballet in Providence. Thanks to a grant from The Fogarty Foundation, tuition to this program is subsidized to provide students with Down Syndrome a creative environment to develop motor skills to enhance their sense of musicality and to have fun learning choreography.

For my Bat Mitzvah project, I am hosting a **Dance-a-Thon** to support the Adaptive program. The funds raised, will be used to continue to make classes affordable for Gabby and others with Down Syndrome, so that everyone has a chance to dance! **Please put on your dancing shoes and join us!**

Event Details:

Date: Sunday, April 30, 2017

Time: Noon to 3:00 p.m.

Location:

Festival Ballet, 825 Hope Street, Providence, RI 02906

Donation: \$20 per Adult \$10 for kids (or give what you can!)



Questions & Registration Information:

Call Lisa Shorr (Sami's Mom): 617-877-4680

Click Here to Donate:

gofundme.com/raise-the-barre-for-down-syndrome

Learn more about the Adaptive Dance Program visit:

www.FestivalBallet.com

From Arts Emanu-El: Remembrances: Two Photography Exhibitions

In the Bohnen Vestry, Temple Emanu-El:



*Alexandra Broches' Letters and Pictures
from a Box:*

An exhibition of hauntingly beautiful digital collages. The exhibit invites us to puzzle out the ways that suddenly discovered letters, photographs and documents from another time and place give clues and glimpses into one family's Holocaust narrative.

March 3 to April 30:

Photographer Jonathan Sharlin's: Portrait Narratives: A Photographic Installation of RI Holocaust Survivors:

Walk among larger-than-life photo-portraits and word-panels of Rhode Island Holocaust survivors. You will recognize and remember many people—including Edward O. Adler, Ray Eichenbaum, Leah Eliash, and others.

At the Art Gallery on Main St., Pawtucket

The Blackstone Valley Visitor's Center's Art Gallery
175 Main St., Pawtucket

Plenty of free parking in the Visitor's Center parking lot, accessed along Roosevelt Ave., at the back of the Visitor's Center, across the street from Slater Mill. Free and open to the public.

Sunday April 30 at 4pm:

Come to the party to celebrate Yom Ha'Atzmaut!

See a fun, fast-paced, upbeat film, cheer for Tel Aviv's team Maccabi, and enjoy some light refreshments. A perfect way to celebrate Israel's 69th birthday and Yom Ha'Atzmaut!

Everyone is invited to see *On the Map*, to celebrate Israel's 69th birthday. The event is for sports fans, Israel fans, and history buffs. It is for adults and teens. It is a film for the community. *On the Map* focuses on two parallel stories: The incredible narrative of Tel Aviv's basketball team, Maccabi's, growth from a local sports club to an international powerhouse as European champions in 1977, alongside of the story of Israel as a newly formed country in 1948 and onward through its complex history. With documentary footage and with interviews of basketball stars like Bill Walton and Tal Brody, and with Israeli personalities like Natan Sharansky and Ambassador Michael Oren, and others, the film is part history, part thriller, part biography, and all parts inspiring. The event at Emanu-El will be all parts fun! Tickets for the film, including refreshments: \$12 each, in advance; \$15 at the door. Purchase through the Temple website.

Pictured right:

Team Maccabi at the European Basketball Championships, 1977.



**The 63rd Annual Meeting of the
Rhode Island Jewish Historical Association**



Prof. Cheryl Greenberg of Trinity College, CT,

will speak at the
David Charak Adelman Memorial Program
on the subject of

**“A History of Black/Jewish Relations
and Why It Matters Now”**



It is **FREE** and **OPEN** to the public, with a social hour to follow.
Program is sponsored by the Arline Ruth Weinberg Memorial Fund.

Sunday, April 23, 2017 from 2 p.m. to 4 p.m.

Temple Beth-El

70 Orchard Avenue, Providence

TE Kadima presents **WHO DUNNIT?**

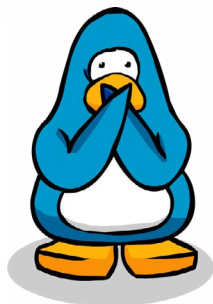
It's Earth Day but the Ice Caps are melting and the
Penguins are in trouble!!!

We think the Polar Bears are up to no good.
Good thing they left clues all over Temple Emanu-El!
Join us to crack the case and save our planet!



Sunday April 23rd
TE Youth Lounge
12:30-2:30pm
Light lunch will be provided

RSVP to
tekadimasarah@gmail.com by
4/21





RABBI STEVEN GREENBERG

the first openly-gay Orthodox Jewish rabbi

COMES TO BROWN

Tuesday, April 25th 7:00pm - Salomon 003

Rabbi Steven Greenberg, the first openly-gay Orthodox Jewish rabbi, is coming to speak on campus on April 25th. Rabbi Greenberg wrote "Wrestling with God and Men: Homosexuality in the Jewish Tradition" and founded the LGBT Orthodox advocacy group Eshel. All are welcome!

Goldilocks and the Three Orthodoxies:

Traditional Responses to Same-Sex Relationships

Orthodoxy is arguably the most diverse of the contemporary Jewish denominations. While the Orthodox response to homosexuality has at times seemed univocal, in fact the record demonstrates much variety. On the basis of contemporary documents and alongside an Eshel Survey of 60 Orthodox rabbis, Rabbi Steve Greenberg will offer three distinctive portrayals offered by Orthodox rabbis to this challenging new set of human realities.

Hosted by Brown RISD JewQ and co-sponsored by: The Pembroke Center and the Gender and Sexuality Studies Program at Brown Brown University Office of the Chaplains and Religious Life
The Brown LGBTQ Center Keshet Boston Congregation Beth Shalom of Providence



Temple Emanu-El Religious School Open House

Sunday, April 30, 2017 | Grades 2-7 | 9:00 AM

Please Help Us Spread the Word to Potential Families

Visitors will be touring the school, participating in classroom life, and meeting current parents and teachers!

Remember: You do not have to be a Temple member to enroll in our school

Religious School Children Bring a Friend Day!

Feel free to bring any friend you want, and show off what you learn and do in Religious School!

The class with the most guests (by percentages) wins an ICE CREAM PARTY!

For more information, contact Miriam Abrams-Stark
miriam@teprov.org or 401.331.1616

Temple Emanu-El | 99 Taft Ave, Providence RI, 02906 | 401.331.1616

DO YOU SUFFER FROM A CHRONIC CONDITION?

Many individuals suffer from symptoms of chronic conditions such as diabetes, arthritis, hypertension and heart disease. *The Chronic Disease Self-Management* program is designed to help individuals dealing with chronic conditions manage and improve their own health, while reducing health care costs.

This program emphasizes practical strategies to manage chronic conditions.

YOU WILL LEARN TO:

- manage pain
- improve nutrition
- exercise to increase strength
- manage medication use
- improve communication with doctors
- action plan and problem-solve for better decision-making

WHO SHOULD ATTEND?

- anyone with a chronic condition interested in improving health, nutrition and pain management.

Start date: **Monday, April 24th**

Location: **Sisterhood Lounge**
(at Temple Emanu-El)

Handicap accessible through kitchen entrance on Morris Ave.

Time: **1:00pm-3:30pm**

RSVP: Temple Emanu-El's Keshet
Social Worker, **Tara Watkins**, at
401-527-7772 or tara@jfsri.org.

Classes are held once a week for 6 weeks and are 2 and ½ hours each.

Gift cards offered as incentives for those who complete the series.

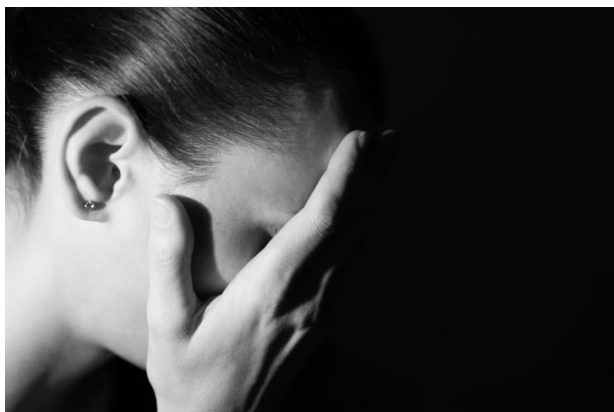
This program is offered by Federal Hill House Association and Rhode Island Parent Information Network free of charge.

The Kesher Program at Congregation Beth Sholom
invites you to the next program in the Understanding Mental Health Series:

A Shabbat Luncheon presentation by

Elinor Collins, CNS:

Differentiating between Sadness and Depression when Coping with Difficult Diagnoses



Saturday, April 29th at 12:00p

Congregation Beth Sholom

275 Camp Street

Providence, RI

Luncheon will be served. Babysitting will be provided.

The Kesher Program at CBS is generously funded by the Jewish Alliance.

Help for Managing Chronic Pain

By Tara Watkins, LICSW

Aches and pains—unfortunately most of us experience them to some degree at different points in our lives. For some, the pain may be mild or merely inconvenient, while others experience excruciating, episodic or continuous pain. Some of the most common sources of pain include headaches, joint pain, pain from injury, backaches and pain from illness, infection or disease.

According to the American Academy of Pain and Medicine, millions of Americans suffer from chronic pain, that is pain that lasts for six months or longer. Often chronic pain is described as either shooting, burning, aching, or electrical. Sometimes feelings of discomfort, soreness, tightness, or stiffness are also present.

However, pain is usually a symptom that does not exist alone. Other symptoms associated with pain include: fatigue, sleeplessness, withdrawal from activities and increased need to rest, a weakened immune system or changes in mood (such as feelings of hopelessness, fear, depression, irritability, anxiety, and stress).

Living with the symptoms of chronic pain often take a toll on a person's physical and emotional well being. Research has shown that because of the strong mind-body link associated with chronic pain, effective treatment requires addressing psychological as well as physical aspects of the condition.

Anxiety, stress, depression, anger, and fatigue often interact in complex ways with chronic pain, potentially inhibiting the body's production of natural painkillers. Additionally, negative feelings may increase level of substances that amplify pain sensations, causing a vicious cycle of pain.

Feeling overwhelmed with chronic pain management and emotional and physical symptoms? Temple Emanu-El in partnership with Federal Hill House Association and the RI Parent

Network Association will be offering a six week workshop series, starting Monday April 24.th The series will be held once a week and cover such topics as pain management, improving nutrition, exercising to increase strength, medication management, improving communication with doctors, and how to create action plans to problem-solve for better decision-making. Please contact Temple Emanu-El's Keshet social worker Tara Watkins at 401-527-7772 or tara@jfsri.org to find out more about this series and/or explore other options for pain management that might be better suited to your individual situation.

Tara will also be having drop in hours next Saturday, April 29, from 10:30-2:00 PM in the Temple Office.

PROJECT KNITZVAH

WHEN

**WEDNESDAY
EVENINGS STARTING
APRIL 26, 2017
7:15-9:15 pm**

WHERE

**Temple Emanu-el
Library**

**KNITTING THE
COMMUNITY
TOGETHER ONE
STITCH AT A TIME**

**KNIT: TO
MAKE A
FABRIC BY
INTERLOCKING
LOOPS OF ONE
OR MORE
YARNS**

**MITZVAH: A
GOOD DEED**

**Bring your
knitting
needles or
crochet
hooks and
yarn. Bring
extra (for
new crafters)
if you have!**

**No
experience
necessary!**

NERUSY'S T.O.

Day at the...



The Paw Sox are the minor league baseball Triple-A affiliate of the Boston Red Sox and a member, since 1973, of the International League.

Come watch as NERUSYers throw out the first pitch, sing the National Anthem, sing during the 7th inning stretch, and welcome the players on the field! ALSO...Everyone can join in the pre-game parade and run bases after the game!

SUNDAY, APRIL 30, 2017

4 IYAR 5777

PAW SOX vs. GWINNETT BRAVES (Atlanta)

Game Time: 1:35pm. McCoy Stadium, Pawtucket, RI

Cost: \$17.00 - Great Seats (Does not include chapter transportation costs).

This includes a \$5 donation to Tikun Olam.

AND... Everyone will receive a \$3 credit which can be used at the ballpark's stores and concession stands!

ALL PROCEEDS WILL BE DONATED TO USY'S CHARITY FUND, TIKUN OLAM
ALL SR./JR. USYers, KADIMA, ALUMNI, PARENTS, AND SYNAGOGUE COMMUNITIES ARE WELCOME!

Reservations are by chapter only. Contact your local chapter to register.

CHAPTER DEADLINE: FIRST COME, FIRST SERVED!

MUST BE RECEIVED IN THE REGIONAL OFFICE BY TUESDAY, APRIL 4, 2017

FOR MORE INFORMATION CONTACT THE NERUSY OFFICE

(617) 964-8210 / joyce@nerusy.org

NERUSY & HANEFESH



SPRING CONVENTION - For 7th - 12th Graders

May 12-14 / 16-18 Iyar, 5777 - Doubletree Hotel, Milford, MA

NERUSY CHAIRS: Julia Levin & Julie Samuels

HANEFESH CHAIRS: Mili Catan & Isaac Schein

TO REGISTER GO TO www.tinyurl.com/nerusy1617

Click on the Convention/Program page, then choose Spring Convention

EARLY BIRD DEADLINE: REGISTRATION AND PAYMENT BY APRIL 5th

COST: \$372 - BEST OPTION!!

REGULAR DEADLINE: REGISTRATION AND PAYMENT BY APRIL 24th / COST: \$385

FINAL DUE DATE: APRIL 24th

Scholarship are available. To apply go to tinyurl.com/nerusyscholarship

Scholarship apps are due on March 30th

You can register and pay online OR register online and pay by check

SPRING CONVENTION INCLUDES...

**A weekend with Hanefesh ...Fun and Meaningful Shabbat ...Youth-Led Programming ...Kosher Meals
...Swimming ...Ruach ...Interesting Study Sessions ...Saturday Night Dance ...Sunday Banquet
...Election of Regional Officers ...Everlasting Friendships ...A Fun Filled Stay at the Doubletree Hotel
and Much, Much More!!**

IMPORTANT: As per Regional Youth Commission policy, **NO REFUNDS** once your payment has been received. Also, payments must be made by the deadline to be registered for Spring.

PLEASE NOTE: The Convention will begin early afternoon on Friday May 12th and will conclude Sunday May 14th in the early evening.

Special Providence USY Deal!

All Providence USY members will only pay a maximum of \$200 to attend Spring Convention, with additional scholarships available! Please email sgelman@teprov.org for more info.



A Taste of
Torah Yoga
Moving into Torah
Temple Beth-El
Silverstein Meeting Hall
May 1, 2017, 7:00 PM

The Chassidic Rebbe Sfatai Emet teaches that the Torah is engraved in the body of a person but it is hidden and needs to be discovered. Through Torah study and Yoga postures we will find Torah within ourselves.

This two hour workshop will be divided into a half hour of text study and an hour and a half of Torah Yoga practice. No yoga experience needed.

Diane Bloomfield is the author of Torah Yoga: Experiencing Jewish Wisdom through Classic Postures. She lives in Jerusalem where she teaches ongoing Torah and Torah Yoga classes live and on the web. As well, Diane teaches Torah Yoga retreats and teacher training programs in the United States at the Hazon Elat Chayyim Center for Jewish Spirituality and other venues. Diane has learned Torah since the mid-eighties at Pardes and other institutions, and with private teachers. She is a certified Junior level Iyengar Yoga Instructor and a Phoenix Rising Yoga Therapist. She is currently working on her new book, Playing with Torah: Delight in a Distressed World.

Wear comfortable clothes and bring a yoga mat.



70 Orchard Ave.
401-331-6070
info@temple-beth-el.org
www.temple-beth-el.org



Temple Emanu-El

Robert Pelcovits

President

Rabbi Wayne M. Franklin

Rabbi Rachel Zerlin

Cantor Brian J. Mayer

Rabbi Alvan H. Kaunfer

Rabbi Emeritus

Paul Stouber

Executive Director

Miriam Abrams-Stark

*Director of Congregational
Learning*

Samuel Gelman

*Director of Youth Engagement and
Justice Organizing*

Joshua Jasper

Librarian