

## About the Artwork

The creative approach we've chosen for this work draws on spiritual traditions and is inspired by God's love for humanity. Through complex sequencing of digital layering and photographic filtering, the artist has brought to life six unique montages embodying a holistic approach to the PSJH Mission work. Each montage consists of several symbolic elements. Primary is the PSJH cross, which is both subtle and centrally located. This symbol represents the principal element and foundation of the parent organization. The blending of bright, vivid watercolors exemplifies the diversity of our faith-based partners, and the creation of harmony as the colors bleed together. Lastly, and mostly hidden, are the tertiary nature elements used to reference both Christian and universal spiritual metaphors as the artist conceived of them for each unique value.





## The Mission

In this first piece, we incorporate the daisy, which historically represents innocence; and the fern, which represents sincerity and humility as it hides among the many colors. The bright colors draw the eye and ask us to feel joy in the boldness of our faith and work.





## Compassion

Fuchsia, yellow and green represent kindness, encouragement and cooperation, key aspects of our compassion. The peace lily symbolizes purity, since we must have pure hearts when we put others before ourselves.





## Dignity

Yellow, blue and green represent intellect, understanding and harmony. Understanding and a peaceable manner are key aspects of dignity. Mother Teresa is the figure we chose to represent this value, as she treated all people with dignity, especially those who were poor and vulnerable.





## Justice

These blues and greens represent trust, stability and endurance, characteristics we must have when pursuing justice. The flowering strawberry historically represents righteousness and good works.

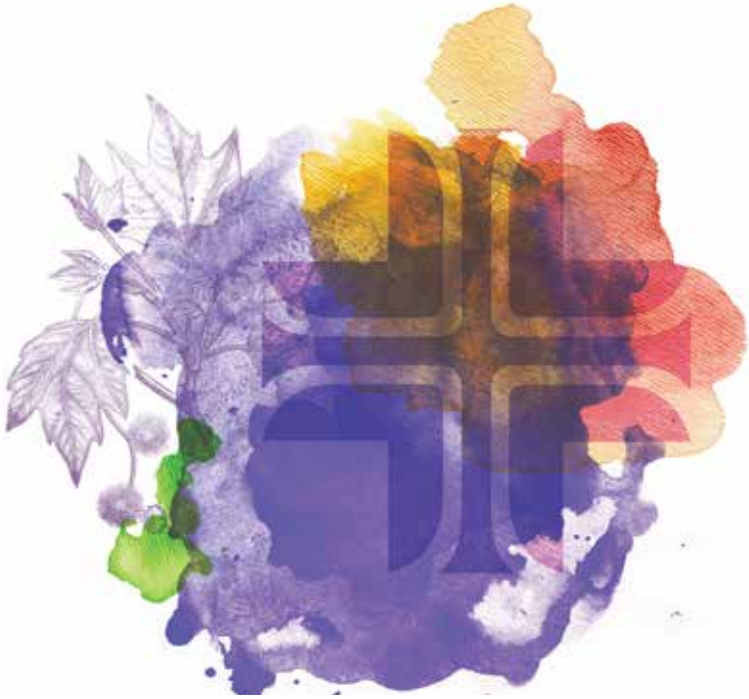




## Excellence

This bold red, orange and gold represent energy, enthusiasm and determination, attributes we must cultivate when striving for excellence. The splash of blue, which is calming, balances the strong, warm colors. Traditionally, the dandelion symbolizes Christ's passion.





## Integrity

The dominant purple, plus red and orange, represent wisdom, dignity and nobility, suggesting that we are wise and noble when we show integrity. The illustration is of the plane tree, which symbolizes love and good character.

