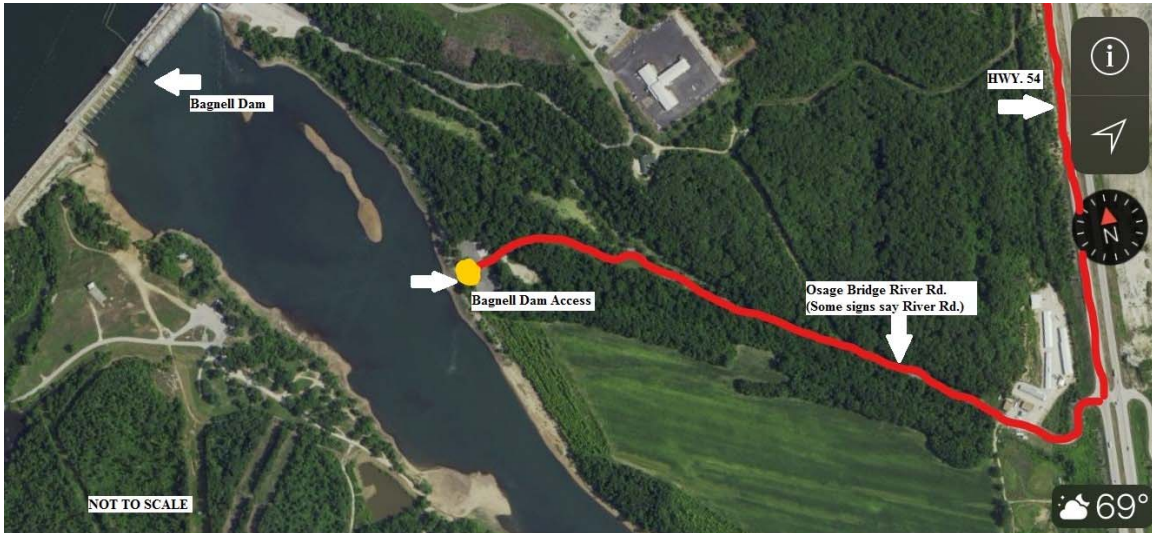


2017 Osage Howler Start-Checkpoint-Finish Line Driving Directions

Bagnell Dam Access: (38°11'59.46"N,92°37'2.16"W)

From Jefferson City:

Take Hwy. 54 South to Osage River Bridge Road (Immediately North of the Osage River Bridge). GO West on Osage River Bridge Road Approximately .40 mile to the access on the left. Bagnell Dam Access is located at the base of the Bagnell Dam



From Lake Ozark:

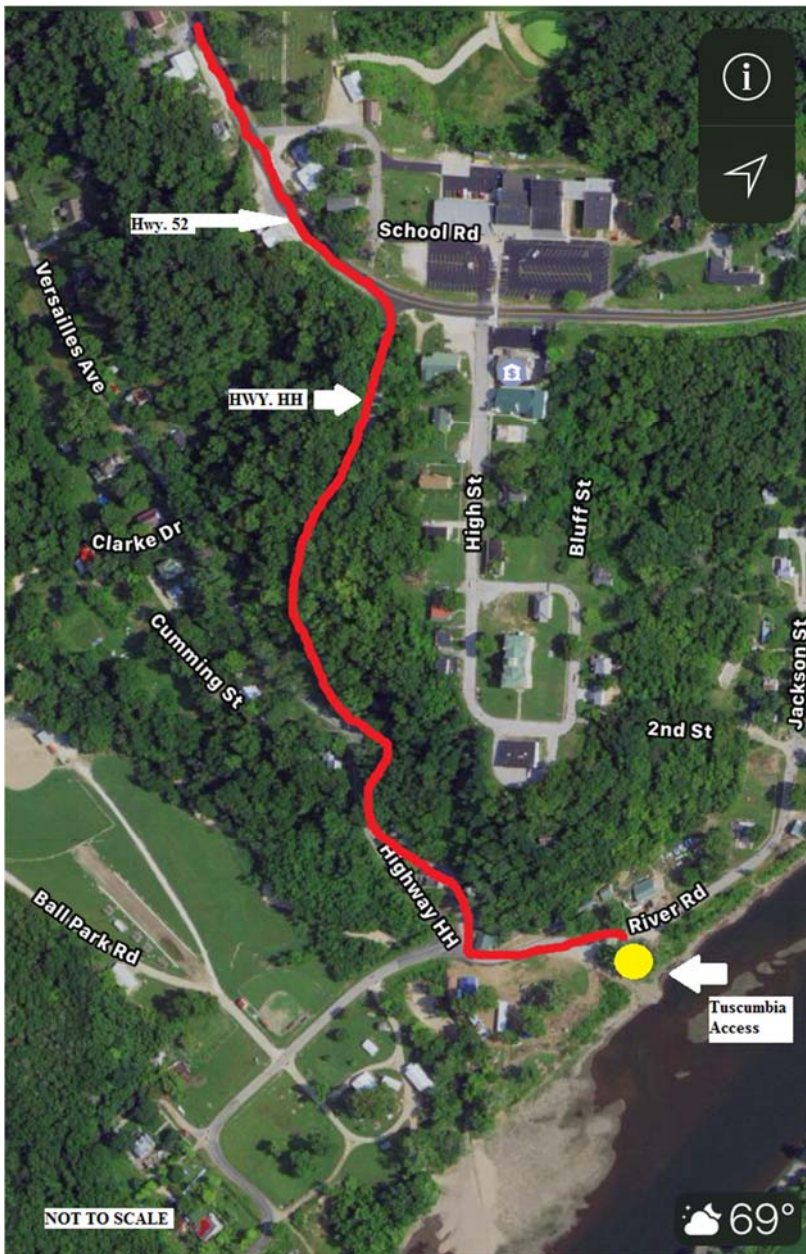
Travel East on Bagnell Dam Blvd. to Union Electric Rd. Go South on Union Electric Rd. to River Rd. Follow to River Rd. to Bagnell Dam Access



Tuscumbia Access: (38°13'56.48"N,92°27'32.27"W)

From Hwy. 54 (Heading North):

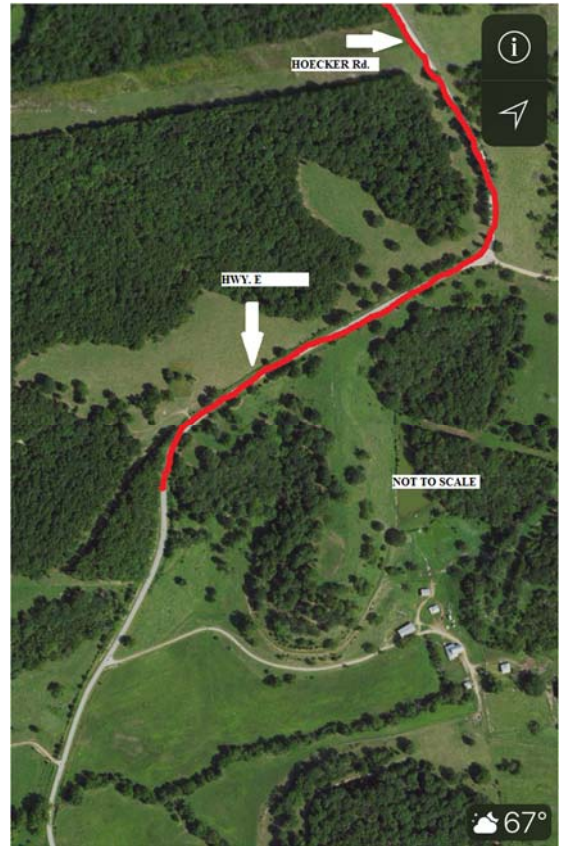
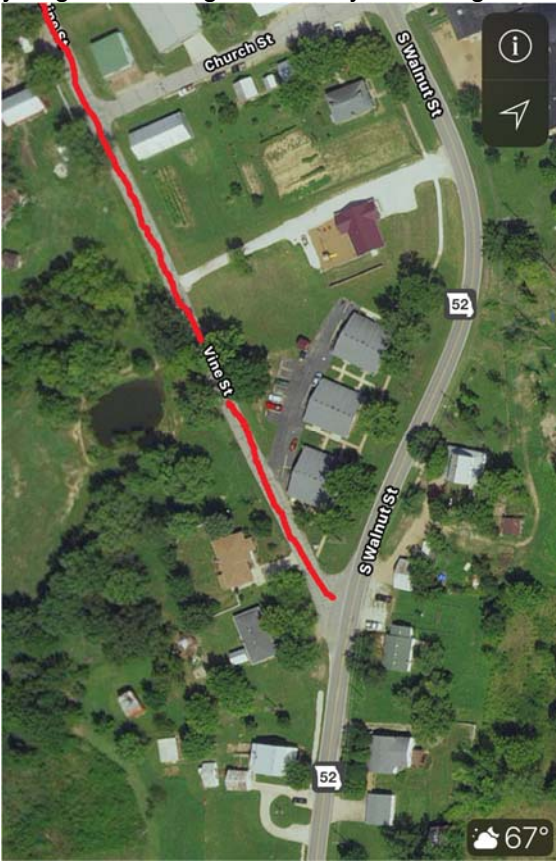
From Hwy 54/Hwy. 52 exit take Hwy. 52 towards Tuscumbia. Turn right on Hwy. HH and follow to HH to River Rd. Turn left on River Rd. Tuscumbia access is directly on the right.



Osage Tavern Access: (38°19'1.92"N,92°17'19.68"W)

From St. Elizabeth:

From St. Elizabeth at the Hwy. 52 and Vine Street intersection take Vine St. N/NW. Vine street will turn into Highway E, follow Hwy. E to fork in road. Veer left on Hoecker Rd. follow Hoecker approximately 1 mile to access on left (If you go over bridge of creek you have gone too far)



St. Thomas Access: (38°25'19.71"N,92°12'28.76"W)

From Wardsville:

From Wardsville at intersection of Route B, Route W, and Route M, take Route B (South) to Old Ferry Road on right and follow to St. Thomas Access



Pikes Camp Access: (38°27'51.59"N,92°10'12.42"W)

From Wardsville:

From Wardsville at intersection of Route B, Route W, and Route M, take Route W approximately 1 miles south to Conservation Rd. on left

