

## Raytec white and infrared LED lighting



### The integration

Wavestore's integration with Raytec LED lights enables a host of advanced lighting features to be controlled directly from Wavestore's WaveView Client software. Users can either control Raytec LED lights on-screen from fully customisable buttons, or automatically on motion or metadata triggered events from any number of connected devices such as cameras, ANPR, access control, PIR detectors and video analytics.

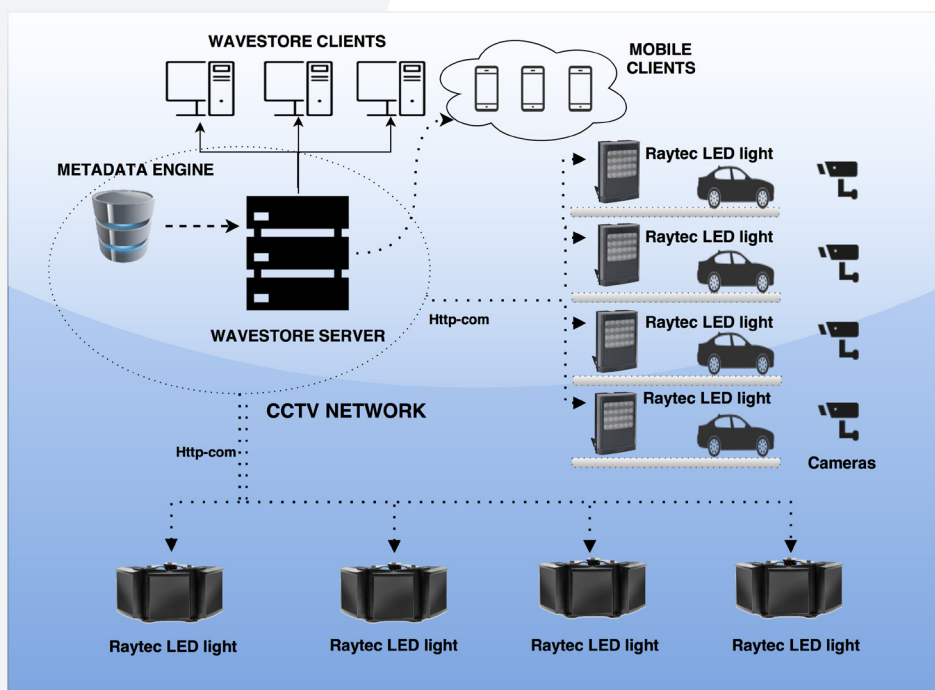
Commands include:

- Turn individual or groups of LED lights on and off
- Sets the brightness level of individual or groups of LED lights to a value between 20% and 100%.
- Set a timer for individual or groups of LED lights in one second increments up to 18.2 hours
- Revert back to a previous state
- Any combination of the above



### Server side

Wavestore VMS servers and Raytec LED lights are connected to each other via the network. In order to facilitate integration between Wavestore and Raytec LED lights the 'Raytec Module' needs to be specified from Wavestore at the time of order to enable the integration on the Wavestore VMS server.



## Raytec white and infrared LED lighting



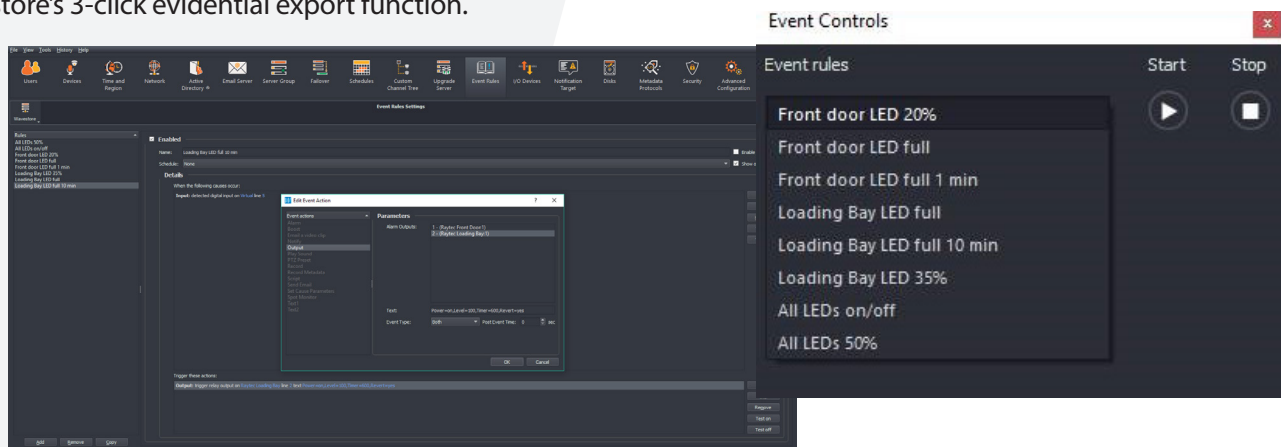
### Main Features of the integration

- Wavestore and Raytec together provide a best-in-breed solution for video, data and LED lighting
- Users can control their LED lights directly from Wavestore's 'WaveView' client software and/or set up actions for specific events, including motion detection and metadata driven events
- One screen, total control – Just one operator screen to seamlessly manage events from CCTV, LED lighting and other integrated technology, such as Access Control and Intelligent Video Analytics
- All commands sent to Raytec LED lights are authenticated by the Wavestore server for enhanced security

### Client side

Raytec LED lights can be controlled directly from Wavestore's WaveView client software, affording users the ability to use on-screen buttons and commands to control lighting functions for specific lighting units, as well as rules to be set-up from any event type; including metadata, motion or timed events.

Wavestore's 'WaveView' client software can be installed on multiple client machines to access the Wavestore server(s). WaveView provides complete live monitoring and playback control of cameras and other devices. This allows an operator to view live video, search for events or manage triggers linked from access control events either in real time as they happen or via post-event interrogation. Operators are then able to easily stitch together video from time-synchronised events using Wavestore's 3-click evidential export function.



Wavestore's event rules engine makes it easy to assign Raytec LED light commands to events or alarms from a variety of connected devices. In addition, user-customisable on-screen buttons enable quick access to LED light functions directly from WaveView client software.