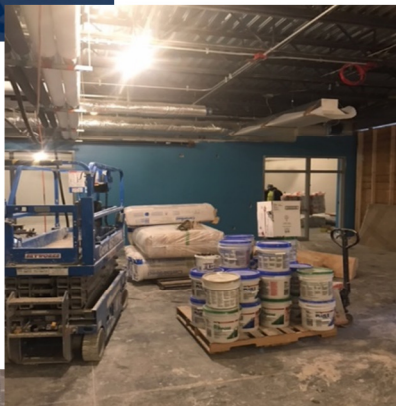


# Weekly Blitz

January 19, 2018



## *Pleasant Run Elementary*



Metal Panel insulation on west end of academic wing 50% complete and hat channel is started. Chilled beams 90% complete along with first coat of all ways in lower level of the academic wing. Rework in the administration area complete.

# *Taylor Elementary*



Duct work hung in main mechanical room of academic wing. Copper piping completed in the art room, insulation to be completed next. Walls have been rubbed in the kitchen and block fill has commenced.

## *Struble Elementary*



Block fill complete in the gym. Chilled beams have been set in ceiling grid on lower level academic wing. Ceiling grid has been completed in the bathrooms of the lower level academic wing.