



Literacy & ESOL

ESL classes are suspended from December 19th – January 2nd. We will resume classes on Tuesday, January 3rd.

MAIN LIBRARY

Beginner ESOL

Saturdays, 9:15 AM
Beech Room

Intermediate ESOL

Tuesdays & Thursdays,
1:00 PM, Community Room
6:30 PM, Beech Room

O'NEILL BRANCH

Intermediate ESOL

Mondays & Wednesdays, 6:15 PM

O'CONNELL BRANCH

Beginner ESOL

Mondays, 6:00 PM



Device Advice

Fridays, December 2, 9, and 16

Fridays, January 6, 13, 20, 27

2:00 - 4:00 PM

Main Library, Rindge Room

We'll assist you in accessing library content on your mobile device. Make an appointment with a librarian by calling the Research Desk at **617-349-4044**. To make an appointment with a librarian at the O'Neill Branch call **617-349-4023** or email esipe@cambridgema.gov

Hours & Locations

All locations are accessible by public transportation. Details are on our website.

BRANCH	ADDRESS	PHONE	MON	TUE	WED	THU	FRI	SAT	SUN
Main Adult	449 Broadway	617-349-4040	9-9	9-9	9-9	9-9	9-5	9-5	1-5*
Children		617-349-4038	9-7	9-7	9-7	9-7	9-5	9-5	1-5*
Teen Room		617-349-4027	12-7	12-7	12-7	12-7	12-5	9-5	1-5*
Boudreau	245 Concord Ave	617-349-4017	10-6	10-8	10-6		10-6		
Central Square	45 Pearl St	617-349-4010	10-6	10-9	10-6	10-9	10-6	10-2*	
Children		617-349-4012	10-6	10-6	10-6	10-6	10-6	10-2*	
Collins	64 Aberdeen Ave	617-349-4021	10-6	10-6		1-8	10-6		
O'Connell	48 Sixth St	617-349-4019	10-8	10-8	10-8	10-6	10-6		
O'Neill	70 Rindge Ave	617-349-4023	10-8		10-8	10-6	10-6		

cambridgepubliclibrary.org



@CambridgePL

* from Labor Day to Independence Day

The City of Cambridge does not discriminate on the basis of disability. The Cambridge Public Library will provide auxiliary aids and services, written materials in alternative formats, and reasonable modifications in policies and procedures to persons with disabilities upon request.



Book Groups

Chick Lit

Wednesday, Dec. 21, 6:00 PM

Wednesday, Jan. 25, 6:00 PM

Main Library Beech Room

Contemporary Book Group

Tuesday, Dec. 20, 6:00 PM

Tuesday, Jan. 17, 6:00 PM

Main Library Beech Room

Nonfiction Book Group

Monday, Jan. 30, 1:00 PM

Main Library Beech Room

Great Books Discussion Group

Tuesday Dec. 13, 7:15 PM

Tuesdays, Jan. 10, 24, 7:15 PM

Main Library,
Community Room

Boudreau Book Group

Tuesday, Dec. 27, 12:00 PM

Tuesday, Jan. 24, 12:00 PM

Boudreau Branch

Central Square Social Club

Tuesday, Dec. 6, 7:00 PM

Tuesday, Jan. 3, 7:00 PM

Central Square Branch

Collins Book Group

Thurs, Dec. 8, 6:00 PM

Thurs, Jan. 12, 6:00 PM

Collins Branch

Kids' Books for Grownups

Thurs, Dec. 15, 6:00 PM

Thurs, Jan. 19, 6:00 PM

Collins Branch

O'Neill Book Group

Monday, Dec. 19, 6:30 PM

Monday, Jan. 23, 6:30 PM

O'Neill Branch

For reading selections and information about joining visit bit.ly/cplbookgroups

December 2016
& January 2017



EVENTS *at the* CAMBRIDGE PUBLIC LIBRARY



42nd Annual Martin Luther King Jr Day Celebration

Sunday, January 8 at 3:00 PM
Central Square Branch

Join us to celebrate the life and legacy of Dr. King with Rev. Mark Scott introduced by Mayor Denise Simmons.



BBB Scams, Fraud, & Identity Theft Program

Monday Dec. 5, 6:00 PM

Main Library, Community Room

The BBB Scams, Fraud, & Identity Theft program will cover the most common scams currently circulating the community, the major Red Flags to watch out for, and the precautionary steps we can take to protect ourselves from falling victim.



Poetry Reading Adam Scheffler & Clint Smith

Wednesday, Dec. 7, 6:30 PM

Please join us in celebrating recent work by award-winning poets and doctoral candidates at Harvard, Adam Scheffler, author of *A Dog's Life* and Clint Smith, author of *Counting Descent*.

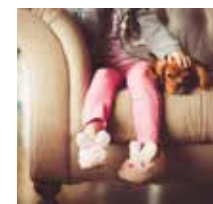


ECRC: Child Development

Thursday, Dec. 8, 6:30 PM

Main Library, Lecture Hall

In this workshop, parenting educator Shawne K. Blake, LSW focuses on growth and change and how developmental stages impact behavior. Request limited free child care at 617-349-4038. Sponsored by the Greater Boston Early Childhood Resource Center at the CPL, the MA Department of Early Education and Care, and Families First Parenting Programs.



ECRC: Raising a Resilient Child

Thursday, Jan. 12, 6:30 PM

Main Library, Lecture Hall

In this workshop, parenting educator Shawne K. Blake, LSW looks at how love, respect, and support can help children develop lifelong confidence and healthy self-esteem. Request limited free child care at 617-349-4038. Sponsored by the Greater Boston Early Childhood Resource Center at the CPL, the MA Department of Early Education and Care, and Families First Parenting Programs.

All locations will be closed Friday, December 23 through Monday, December 26 and Sunday, January 1 through Monday, January 2 in observance of the holidays, and Monday, January 16 in honor of Martin Luther King Jr. Day.



Branches

Great Bibliotheque Bake Show

Collins Branch
Thursday, Jan. 26, 6:00 PM

We know how the British do it—now let's show them how library patrons handle themselves in the kitchen. We'll have a rotating roster of assignments and judges. First up: Apple Pie! Everyone's favorite but can you turn your special pie into everyone's favorite? Guest Judge: Renowned baker and author Louise Miller!

Board Game Night

O'Connell Branch
Tuesday, Dec. 6 & Jan. 3,
6:00 PM

Come join friends or meet new people to play a variety of board games. Bring your favorite game or learn a new one. No experience needed—all are welcome!

Holiday Cookie Party!

Collins Branch
Friday, Dec. 16, 4:00 PM

It's the 243rd Anniversary of the Boston Tea Party, so the Collins Branch will celebrate with its own. Get in the holiday mood while we decorate cookies for the holidays, pour tea, and browse the collection for titles to enjoy over the holidays.

Meet the Artist: Nadia Yassa

O'Neill Branch
Friday, Dec. 16, 3:00 PM

Cambridge-based printmaker, Nadia A. Yassa, will be showing a variety of prints inspired by nature and music.

Winter Craft

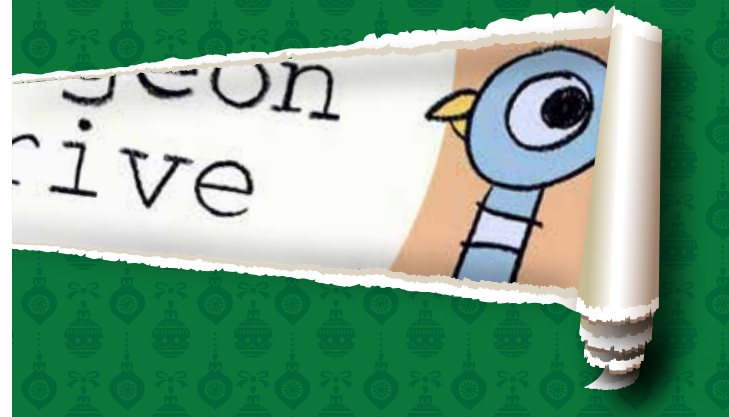
O'Neill Branch
Friday, Dec. 30,
12:00 - 4:00 PM

Warm up and get creative with fancy crafts. *All ages.*

Give the Gift of Stories You Love

Donate new children's and young adult books to any Cambridge Public Library for children currently in transitional housing. We are collecting new, unwrapped books for all ages—babies to teens. **Porter Square Books is offering a 20% discount toward any books purchased for this project.** Share stories you love.

Call 617-349-4038 for more information.



YA Teen Room

Teen Advisory Board

Monday, Dec. 19, 5:00 PM
Monday, Jan. 23, 5:00 PM
Main Library, Teen Room

Afternoon Movie: Captain America

Thursday, Dec. 15, 3:00 PM

Mad Max

Thursday, January 19, 3:00 PM
Main Library, Teen Room



Cartoon Afternoon

Friday, Dec. 9, 3:00 PM
Friday, Jan. 6, 3:00 PM
Main Library, Teen Room

Advanced DIY Holiday Crafts

Wednesday, Dec. 14, 3:00 PM

Coloring Pages

Wednesday, Jan 11, 3:00 PM
Main Library, Teen Room

For more information about Teen Room programs visit bit.ly/cplteens



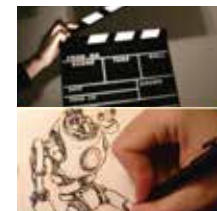
Children's Room



Winnie-the-Pooh Special Storytime

Wednesday, Jan. 18, 4:00 PM
Main Library,
Curious George Room

Join us for Winnie-the-Pooh stories and songs in honor of the 135th birthday of A. A. Milne.



Book Shop

Monday, Dec. 12, 5:30 PM
Monday, Jan. 9, 5:30 PM
Main Library,
Curious George Room

Book Shop is a hybrid book group and makerspace workshop for middle school students. Collage! Comics! Podcasts! Short films! The book is just the beginning! For ages 11-13. Space is limited. Registration is required. Email emeyer@cambridgema.gov or call 617-349-4038 to register or for more information.



NOON Year's Eve Party

Saturday, Dec. 31,
11:30 AM - 12:30 PM
Main Library,
Children's Room

Make a noisemaker, enjoy a toast (of apple juice) and count down to 2017 in the Children's Room!

For more information about Children's programs visit bit.ly/cplkids

ask the CAREER COUNSELOR

IN PARTNERSHIP WITH THE OFFICE OF WORKFORCE DEVELOPMENT

Mondays, Dec. 5, 19, and Jan. 9
2:00 - 4:00 PM | Main Library

Sign up at the Q&A desk on the day of the program.

Drop by for a 15-30 minute session with a career counselor from the Cambridge Employment Program. Career counselors will be onsite at the Main Library.

MAIN LIBRARY *

Movies for Littles
Saturdays, 11:30 AM

Baby Lapsit %
Mondays, 10:00 AM

Sing-Along #
Mondays & Wednesdays,
11:00 AM
& Thursdays, 4:00 PM

Afterschool LEGO® Time %
Mondays, 4:00 PM

Toddler Storytime ^
Tuesdays & Thursdays,
11:00 AM

Preschool Storytime ^
Tuesdays, 4:00 PM

Onesies (and Twosies) %
Wednesdays, 10:00 AM

Parent/Child Book Group

Tuesday, Dec. 13 & Jan. 10,
6:00 PM

for ages 7-10

Wednesday, Dec. 14 & Jan. 11,
6:00 PM
for ages 10-13
Main Library
Curious George Room

BOUDREAU BRANCH

Storytime
Mondays, 10:30 AM

Toddler Sing
Wednesdays, 10:30 AM

CENTRAL SQ. BRANCH

Storytime
Wednesdays, 10:30 AM

Sing-Along & Storytime

Thursdays, 10:30 AM

Afternoon Crafts
Wednesdays, 4:00 PM

COLLINS BRANCH

Storytime
Mondays, 3:30 PM

Toddler Sing
Tuesdays, 10:30 AM

O'CONNELL BRANCH

Toddler Sing
Tuesdays, 10:30 AM &
Wednesdays, 11:00 AM

Afterschool Crafts
Thursdays, 3:30 PM

Songs and Stories in Spanish/Cuentos y Canciones en Español
Fridays, 3:00 PM

Family Reading Night

Tuesday, Dec. 27, 6:30 PM
Tuesday, Jan. 31, 6:30 PM
for all ages

Bring a pillow! Share your favorite books!

O'NEILL BRANCH

Toddler Sing
Mondays, 10:30 AM

Preschool Storytime
Thursdays, 11:00 AM

Books and Bites
Wednesday, Dec. 7, 6:00 PM
Wednesday, Jan. 4, 6:00 PM

* Main Library Children's program tickets are available to complete parties on a first-come, first-served basis on the day of the program.

Age Ranges Baby Lapsit: Pre-walkers Onesies: Walking babies Toddler: 0-3 Preschool: 3-5 Afterschool: 5-10

Capacities # 130 ^ 45 % 30