



# AUTOGAS ANSWERS

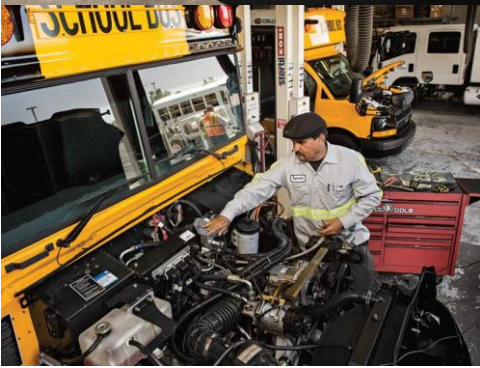
Your Fleet Fueling Needs

*Greg Zilberfarb*





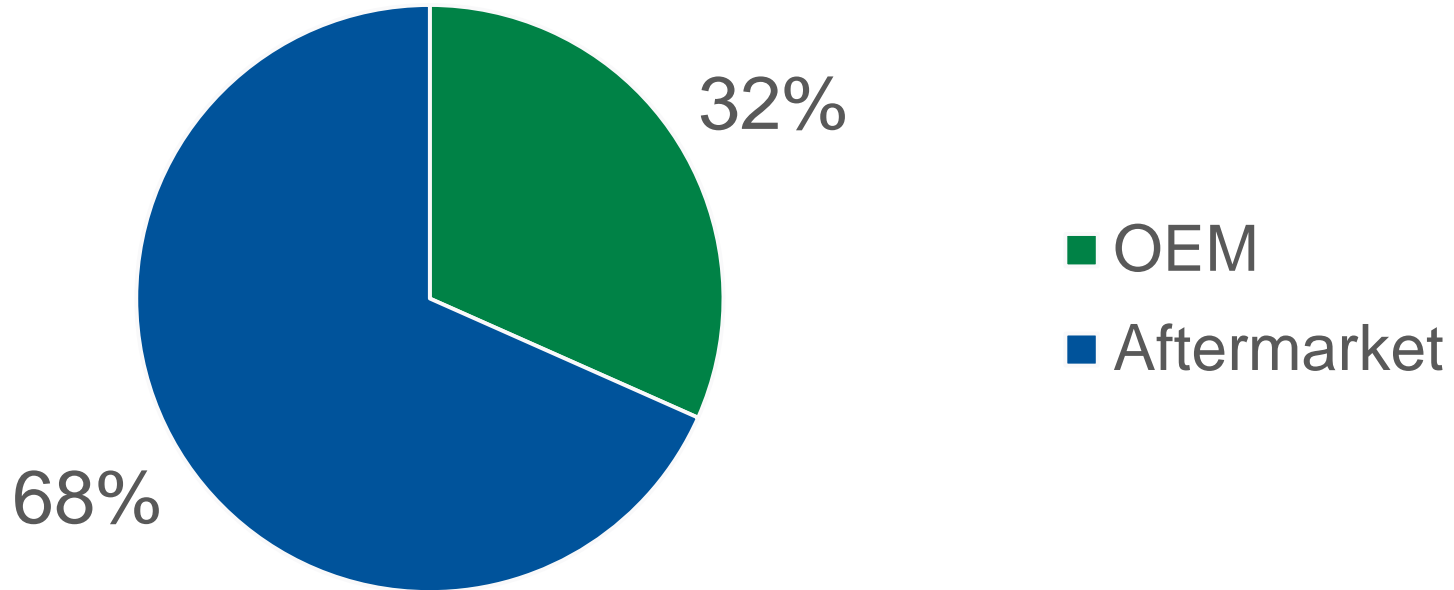




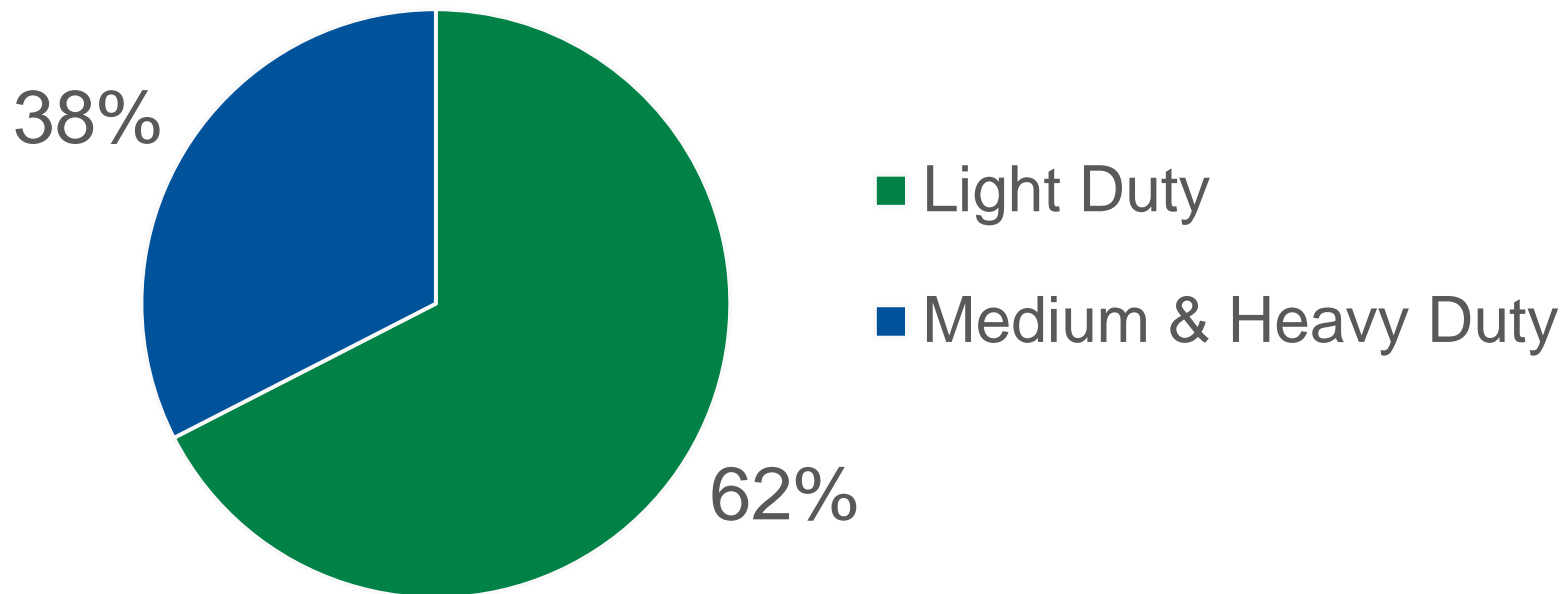
# PROPANE AUTOGAS VEHICLE SALES



# 2017 PROPANE SALES



# NEW PROPANE SALES 2017



# SNAPSHOT OF PROPANE AUTOGAS SCHOOL BUS MARKET

//////// TOTAL NUMBER OF //////////  
SCHOOL BUSES IN OPERATION  
THROUGH 2017

**14,744**



# SNAPSHOT OF PROPANE AUTOGAS SCHOOL BUS MARKET

**10** STATES WITH  
  
**500+ BUSES**

**900,000**  
STUDENTS TRANSPORTED  
//////// **DAILY** ///

**830** DISTRICTS &  
CONTRACTORS  
////////////////////  
OPERATE PROPANE AUTOGAS BUSES



# THE LOWEST TOTAL COST-OF-OWNERSHIP

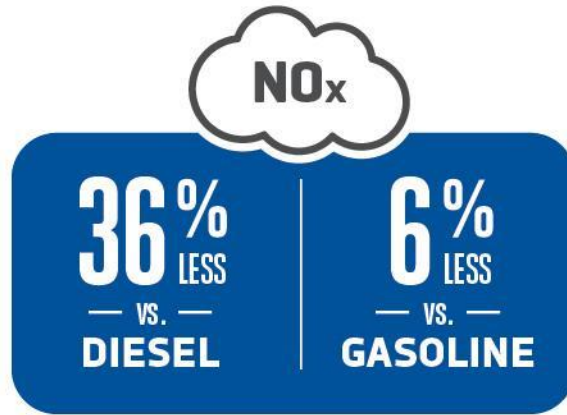
- Complete lifecycle analysis.
- 3 F's: Fuel, Filters, and Fluids.
- Maintenance and repairs.
- Labor and wages.
- Fuel handling and storage.
- Garages and facilities.
- Refueling infrastructure.



Non-toxic and a non-contaminant of  
air, soil, and water resources.

# EMISSIONS REDUCTION

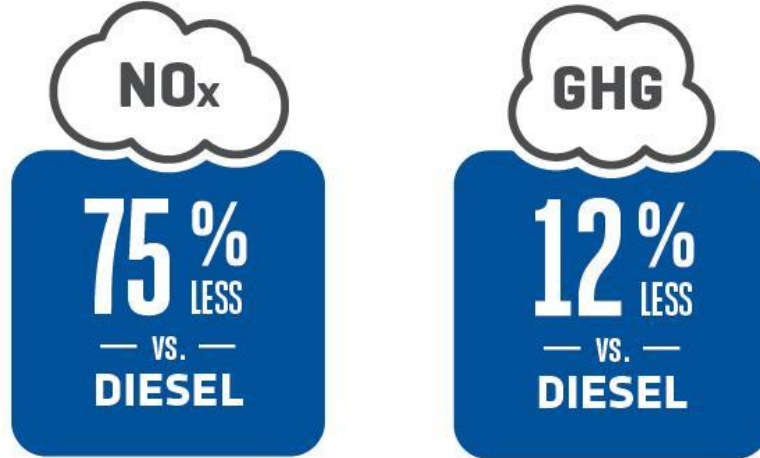
## Light-Duty Trucks



\*Assumed annual mileage: 11,400. Fuel economies based on 2016 AFLEET data.

# EMISSIONS REDUCTION

## Medium-Duty Trucks



\*Assumed annual mileage: 20,000. Fuel economy based on propane industry data.

# NAVIGATE YOUR REFUELING OPTIONS

- Whether you have 10 fleet vehicles or 100, propane autogas has a refueling infrastructure option to fit your needs.
- Whichever setup you choose, you're sure to save money on total cost-of-ownership and keep your fleet efficient.

*Call your infrastructure provider for more information about any of these options, and your local propane retailer for information regarding fuel.*























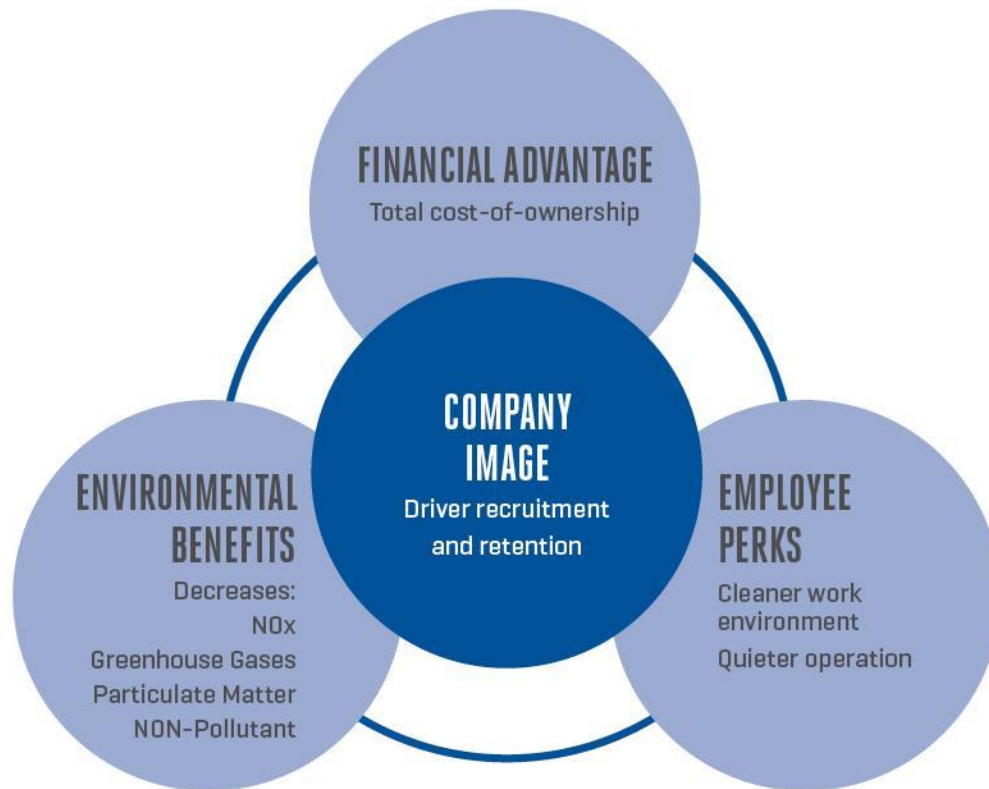
# CUSTOMER TESTIMONIAL

“Propane gives us the ability to buy a vehicle that performs almost exactly like all of our [conventionally fueled] technologies. It’s almost seamless for us.”

**Bill Spraul**

*Chief Operating Officer*

*San Diego Metropolitan Transit System*



For more information contact  
Michael Taylor, Director of Autogas  
Business Development  
[Michael.Taylor@propane.com](mailto:Michael.Taylor@propane.com)  
202-452-8975

Greg Zilberfarb  
[greg@tsncommunications.com](mailto:greg@tsncommunications.com)  
703-779-4890