



WELCOME PACK

THE ALBION FOUNDATION

5K Colour Fun Run

27.07.17

inspire to achieve



What's it all about?

The Colour FUN Run is a five-kilometre, un-timed race in which thousands of participants are doused from head to toe in different colours along the route.

Thanks to supporters like you, we are able to provide sporting and educational opportunities to the most disadvantaged members of our local community and we are asking you to join us for this fun day.

Whether this is your first steps in running, an Olympian, a junior or very experienced; we welcome you all, you can walk, crawl, skip or run and wear silly costumes while following the scenic and safe 5K route.

A great day out for the entire family, as they can come along for a picnic and to cheer you on along the way.





Let's get to the nitty-gritty

Date:

Saturday 22nd July, 2017

Venue:

Sandwell Valley Country Park,
Salter's Lane,
West Bromwich
B71 4BG

Get Ready!

On your marks by 1pm!

Please ensure you Sign in before you are allowed to Race.
Registration open at 11am and closes at 12:30pm ready for warm up with our expert fitness coaches.

Shape Festival 11:00am
Event Finishes at 5:00pm

WARNING!

This event contributes towards improving health, mind & body

Your Runners Pack includes:

- T-shirt
- Your runners number
- Your personal Colour packet
- Finishing Winners Medal
- Plenty of colourful fun on the day

You can collect on the day when registering or fast track to your home at a minimum cost of £2.50.



inspire to achieve

Frequently Asked Questions



Can children take part?

Yes! The Colour Fun Run is open to all ages so anyone and everyone can take part, so whether you are young, old, short or tall you can join in! Those taking part under the age of 16 will need to be accompanied by a participating adult.

Can I walk the route?

Of course! You can run, walk, jog, skip all to your own pace from start to finish. However, it is a good idea for everyone to be aware of the people around you. With people travelling at different speeds, it's important to leave room for any runners to overtake

How long is the course?

The course is approximately 5k (3.1 miles) long.

Is the race timed?

No, the 5k course is un-timed, so you can concentrate on having fun and getting covered in paint!

Can family and friends come to spectate?

Of course, we welcome all friends and family. Do let them know that they should expect to get a splashing of colour, especially if they stand around the paint stations. If this is undesirable, then spectators should stay a safe distance away and upwind from the nearest paint station.

Can I bring a picnic?

Yes, please bring a picnic, snacks and drink refreshments, no alcohol allowed.

Do I need to raise sponsorship?

You are encouraged to raise as much sponsorship as possible to help support The Albion Foundation. If you make a plan and start early, fundraising doesn't have to be a drag.

YOU CAN:

Sign up and personalise your own Just Giving page

Complete the sponsorship form you will receive from us in the Information Pack that you can download on our events page - <http://conta.cc/2nxbmPH>

You can run without sponsors, however we would greatly appreciate your support and assistance in raising funds for this worthy charity, thus allowing us to continue the great work that we do.

What do I get when I sign up?

Not only are you joining the most fun-filled running experience of your life, you will also receive an

What do I need to take with me on the event day?

You will need your printed confirmation email (or just download or take a photo of it on your phone), Bring comfortable clothing, running shoes or sturdy walking shoes suitable for a mixture of terrain. And don't forget your smile! :)

Are there changing rooms / somewhere to leave a bag?

There won't be any changing rooms or left luggage available on site, so please leave all your personal belongings with friends or family. We are unable to accept responsibility for items left unattended.

How do I organise large bookings or corporate teams?

Simply email or call the Albion Foundation Events Team – Linda on 0755 130 8068 / lamillar1@icloud.com

Am I allowed to use alcohol at the event?

The Albion Foundation Colour Run is an alcohol free event – we promise that you will have a lot of fun also without drinking! ;)

How do I clean up after I've finished the 5k course?

Unfortunately, we are not able to get cleaning stations at the event. In fine weather it is quite easy to shake the colour off the clothes, but in damp weather we recommend you to bring change of clothes or some towels or large plastic bag with you to prevent your car or public transport from getting coloured.

Our powder is made from natural corn starch with colour dyes that are food and cosmetic grade tested to the highest FDA standard and manufactured specifically for throwing at people. They might still cause an allergic reaction to those who have asthma, allergies or are sensitive to dust. Therefore appropriate protective gear, such as goggles, sunglasses, bandanas and face masks should be worn to protect the eyes and face from exposure to the coloured powder during the event.

You can also cover your hair with a bandana or beanie or space helmet during the event if you wish.

After you have finished the event just blow all the excess colour off dry before entering shower.

After first shower some of the colour still might show a little but don't worry: after couple of washes you should be clean as brand new!

It's advised to wash all your clothes first separately in cold water.

Can I participate if I have some health concerns?

Running is a physically active sport. You should always seek advice from your GP before taking up a strenuous physical pursuit such as this.

Although our mission is to make the race as safe as possible for every participant, there is always the possibility of unforeseeable incidents (such as falling or bumping into another person).

Please be aware in certain sections of the course, there is open water and children under 16 must be accompanied at all times. In parts of the course the ground can be uneven and in turn, hazardous. Therefore, we strongly recommend no use of pushchairs or wheelchairs to participate in the fun run. Please wear sensible running or walking shoes suitable for a mixture of terrain that be can uneven and hazardous.

CONDITIONS

Participants should be in a reasonable state of health.

The Charity cannot be held responsible for any personal accident or injury or loss of personal effects.

Open Water

Please be aware in certain sections of the course, there is open water and children under 16 must be accompanied at all times. – please see 5K Colour Run Course Route

I am unable to attend the event, can I get my money back?

The entry fee to The Albion Foundation 5k Colour Run is non-refundable.

What happens if it rains?

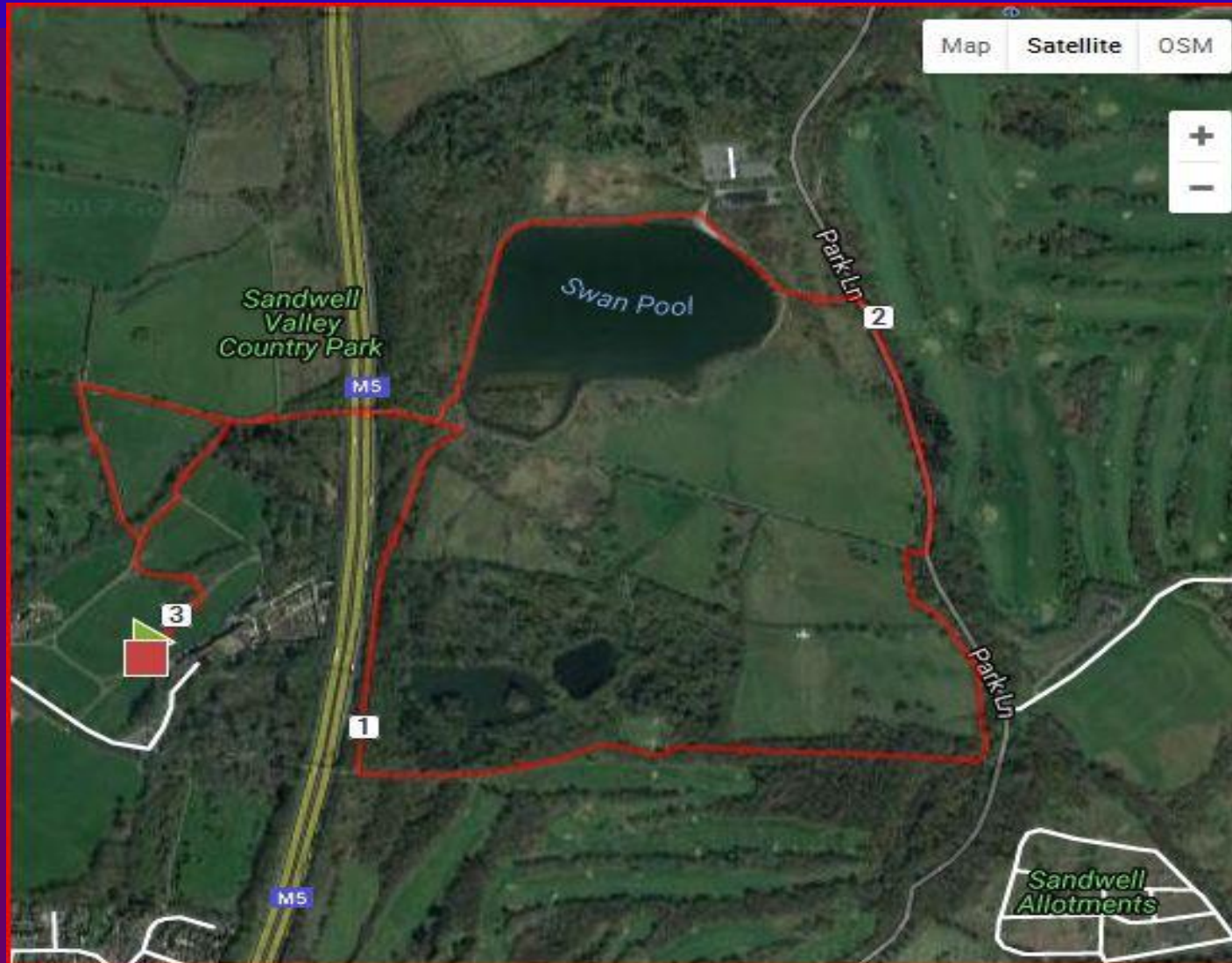
We'll be plastering you in colour come rain or shine, so there are no excuses!

Is there parking available?

There is paid car parking available at Sandwell Valley Country Park. Please bring loose change with you to pay for your car parking. Given the limited parking, we suggest that if possible you walk, cycle or use public transport to reach the event. Please click the link for **Local Bus Timetables**.

- Sandwell Valley Country Park - 5K Colour Run Course

LINDA INSERT YOUR COURSE MAP HERE



- **Sandwell Valley Country Park - Risk Assessment**
Please Read Carefully
Go to Next Page

General Risk Assessment Form 001a

Risk Assessment No. **SVRA001**

Location **Sandwell Valley Park Farm Visitors Centres**

The Activity/Equipment/Machinery/Vehicles/
Agents/Substances etc involved

Site Activity at Sandwell Park Farm

Assessed
by **Matt Darby/Andy Pearsall**

Approved by
manager **Cherie Lumby**

People involved in risk
assessment

Matt Darby/Andy Pearsall

Date **22 April 2016**

Review
date **April 2017**

Risk assessment scoring guide

Consequence or severity = C		Likelihood (chance of it happening) = L	
1	Insignificant - no injury or illness	1	Very unlikely (1 in a million chance)
2	Minor – injury/illness needing first aid	2	Unlikely (1 in 100,000 chance)
3	Moderate – up to 3 days' absence	3	Fairly likely (1 in 10,000 chance)
4	Major – more than 3 days' absence	4	Likely (1 in 1,000 chance)
5	Catastrophic – death	5	Very likely (1 in 100 chance)

Unacceptable - risks rated 17 to 25. Stop the activity and make immediate improvements.

Tolerable - risks rated 10 to 16. Look to improve within specified timescale.

Adequate - risks rated 5 to 9. Look to improve at next review.

Acceptable - risks rated 1 to 4. No further action, but ensure controls are maintained.

[ILO: UNCLASSIFIED]

General Risk Assessment Form 001a

Hazard and effect	People at risk	Existing workplace precautions	Existing risk control systems	Risk assessment		
				C	L	Risk (C X L)
1.Outbreak of Fire in buildings and on open land. Smoke inhalation, burns, death and damage to property.	Employees, volunteers, visitors, contractors, Delivery personnel.	Audible fire alarms. All employees are basic fire safety Competent. Evacuation procedure, Evac chair, fire assembly points.	Fire risk assessment SVRA002. Emergency fire procedures will include the evacuation of animals. Maintained fire alarm system. Weekly tests and annual drills. Monitoring and inspections. Training refreshers. Hot works permits.	1	4	4
2. First aid occurrences	Employees, volunteers, visitors, contractors,	Competent employees can be summoned from Reception, first aid equipment and defibrillator located in the staff mess room near reception. Contact emergency services.	Risk assessment SVRA003. Training refreshers. First aid equipment checks. Accident report form 012a to be completed. All first aiders have access to a computer to complete submission of online reporting form.	2	4	8
3. Violence and Aggression. Injuries, muscular	Employees, volunteers, visitors, contractors,	Staff have undergone violence and aggression training. All staff have a means of communication radio/mobile phone. CCTV in some	Serious Incidents Data base notifications. Regularly share information with police via	3	3	9

[ILO: UNCLASSIFIED]

General Risk Assessment Form 001a

Hazard and effect	People at risk	Existing workplace precautions	Existing risk control systems	Risk assessment		
				C	L	Risk (C X L)
skeletal, phycological.		areas on site. Reporting incidents immediately to the police.	Countryside Watch and other media. Councils 012V form completed for all V&A incidents.			
4. Movement of vehicles and people. Slips, Trips, Falls. Crush, impact injuries and damage.	Employees, volunteers, visitors, contractors, Delivery personnel.	Roadways, footpaths, bridges, gates, car parks, traffic calming, speed limits, restricted access areas, signage and road markings. Overflow car parks available for high volumes of traffic. Temporary signage to direct traffic flow. Concessions have designated parking areas and are encouraged to stay in one place.	Monitoring and inspections. Repairs and maintenance. Speed limited to 15mph on the roadways and 5mph in pedestrian areas/paths. All gates to be kept closed	2	4	8
5. Use of workplace Machinery . Slips, Trips, Falls. Crush, entanglement, impact injuries and damage.	Employees, volunteers, visitors, contractors,	Competent employees, specific risk assessments, flashing beacons to be used where fitted. Correct PPE identified per machine with noise risk assessment. Access restrictions employed to segregate visitors from work area.	Risk assessments specific to machinery. Monitoring and inspections. Seat belts to be worn. Speed limited to 15mph on the roadways and 5mph in pedestrian areas/paths where applicable. Arrangements in place where possible to segregate machinery and visitors.	3	4	12

[ILO: UNCLASSIFIED]

General Risk Assessment Form 001a

Hazard and effect	People at risk	Existing workplace precautions	Existing risk control systems	Risk assessment		
				C	L	Risk (C X L)
6. Use of electrical equipment. Electrocution, burns, fire.	Employees, visitors, contractors	All equipment must be visually inspected for any damage including cables and plugs. Only 110v equipment to be used outdoors.	Annual PAT testing of equipment. 5 year fixed wiring inspection completed.	5	2	10
7. Animals, livestock. Crush, bites, impalement, infections.	Employees, volunteers, visitors, contractors,	Site rules signage. Restricted access, dogs should be kept on a lead where animals are present, dog waste bins. Animal handling system's in use. Animal movements kept to minimum and only outside peak times. Temporary barrier systems available. Livestock transporter on site for longer distances. Padlock secured stock fields. Breed selection taken consideration and stocking density.	Competent employees, specific risk assessments and Visitor information Risk assessment review. Monitoring and inspections. Guide dogs only in the visitor centre. DEFRA legislation and veterinary services maintained.	2	4	8
8. Zoonosis. Animal born Infectious diseases from petting, cross contamination, poor hygiene.	Employees, volunteers, visitors, contractors,	No food or drink to be consumed around livestock, when working or petting animals, areas that contain animals or substances (feeds/equipment) relating to the farms other than in specified areas. These are staff welfare facilities, picnic areas, tearooms, vending areas. In house cleaner employed.	Hand wash facilities available. Monitoring of facilities. Signage to encourage hand washing. Signage to advise on specific diseases relating to certain animals and times of year. Laundry facilities on-site and	4	3	12

[ILO: UNCLASSIFIED]

General Risk Assessment Form 001a

Hazard and effect	People at risk	Existing workplace precautions	Existing risk control systems	Risk assessment		
				C	L	Risk (C X L)
		Replenishment of hygiene consumables.	showers provided. All areas to be inspected prior to undertaking any activities for evidence of fouling by animals. Pest Control contract in place. Env' Hea' Ser' periodic independent inspections in place.			
9. Open water, ice and water borne craft. Drowning, exposure to low temperatures and disease. Impact injuries.	Employees, volunteers, visitors, contractors,	Competent employees, Visitor information, site rules signage, defect reporting procedure. Throw lines at swan pool. Seasonal signage to display danger thin ice. Monitor weather.	Corporate water safety policy. Parks and Green Spaces Health and safety and Water Safety Group. Training refreshers. Monitoring and inspections. Audits. Risk assessment in place (SVRA005) Daily monitoring regime in place for Swan Pool. Signage includes do's, don'ts and emergency procedures. Procedure in place for group activities e.g. ask for risk assessment, public	2	4	8

[ILO: UNCLASSIFIED]

General Risk Assessment Form 001a

Hazard and effect	People at risk	Existing workplace precautions	Existing risk control systems	Risk assessment		
				C	L	Risk (C X L)
			liability insurance and competency. Emergency procedures in place. Signed up for Met Office weather alerts.			
10. Management of local nature reserves, woodland and countryside. Slips, Trips, Falls. Crush, impact injuries and damage. Falling trees or branches.	Employees, volunteers, visitors, contractors,	Competent employees, signage, defect reporting procedure. Regular maintenance taking place weekly. See also Open Water, outbreak of fire, movement of vehicles and people	Monitoring and inspections. Tree surveys, reports and audits.	2	4	8
11. Facilities management for example cleaning, spills, defects to buildings and facilities causing Slips, Trips, Falls. Crush, impact injuries	Employees, volunteers, visitors, contractors, Delivery personnel.	Competent employees, signage, defect reporting procedure. Mainline high pressure fuel pipeline intersects across Sandwell Valley Country Park information procedure and plans. Regular maintenance taking place. Signage in place. Property maintenance provide emergency repairs/ repairs. Equipment on-site to deal with spills	Monitoring and inspections. Repairs and maintenance. Risk assessment reviews. Competency training programme in place. Alarms covering fire and intruder security in place. CCTV present in some areas. Regular testing	3	4	12

[ILO: UNCLASSIFIED]

General Risk Assessment Form 001a

Hazard and effect	People at risk	Existing workplace precautions	Existing risk control systems	Risk assessment		
				C	L	Risk (C X L)
and damage.		are body fluids kit and fuel spillage kit.	regime in place periodic electrical inspections, legionella tests and PAT testing. Risk Assessments for cleaning (Cleaning Risk Assessments folder 004)			
12. Visitor activities: Educational. Rambling and walking. Water sports Cycling Sports activities Adventure playgrounds. Trailer rides High rope Ariel adventure Tea rooms Shops Farm, fairgrounds and gardens Function rooms	Employees, volunteers, visitors, contractors, Delivery personnel.	Managed activities; High Rope Adventure's and Valley Cycles. Clubs arranged events. Visitor information, site rules signage. Specific risk assessments. Defect reporting procedures. All SMBC vehicles and equipment undergoes regular maintenance and checks. All non SMBC vehicles and equipment to provide relevant certification.	Competency training programme in place. Monitoring and inspections. Repairs and maintenance. Special event briefings. External inspections by Environmental Health, DEFRA. Inspections and checks in place for relevant industry legal requirements e.g. PIPPA's and ADIP's	3	4	12

[ILO: UNCLASSIFIED]

General Risk Assessment Form 001a

Hazard and effect	People at risk	Existing workplace precautions	Existing risk control systems	Risk assessment		
				C	L	Risk (C X L)
Special events. Slips, Trips, Falls. Crush, impact injuries and damage.						

[ILO: UNCLASSIFIED]



inspire to achieve

We look forward to seeing you on the day!

For any enquiries contact Linda:

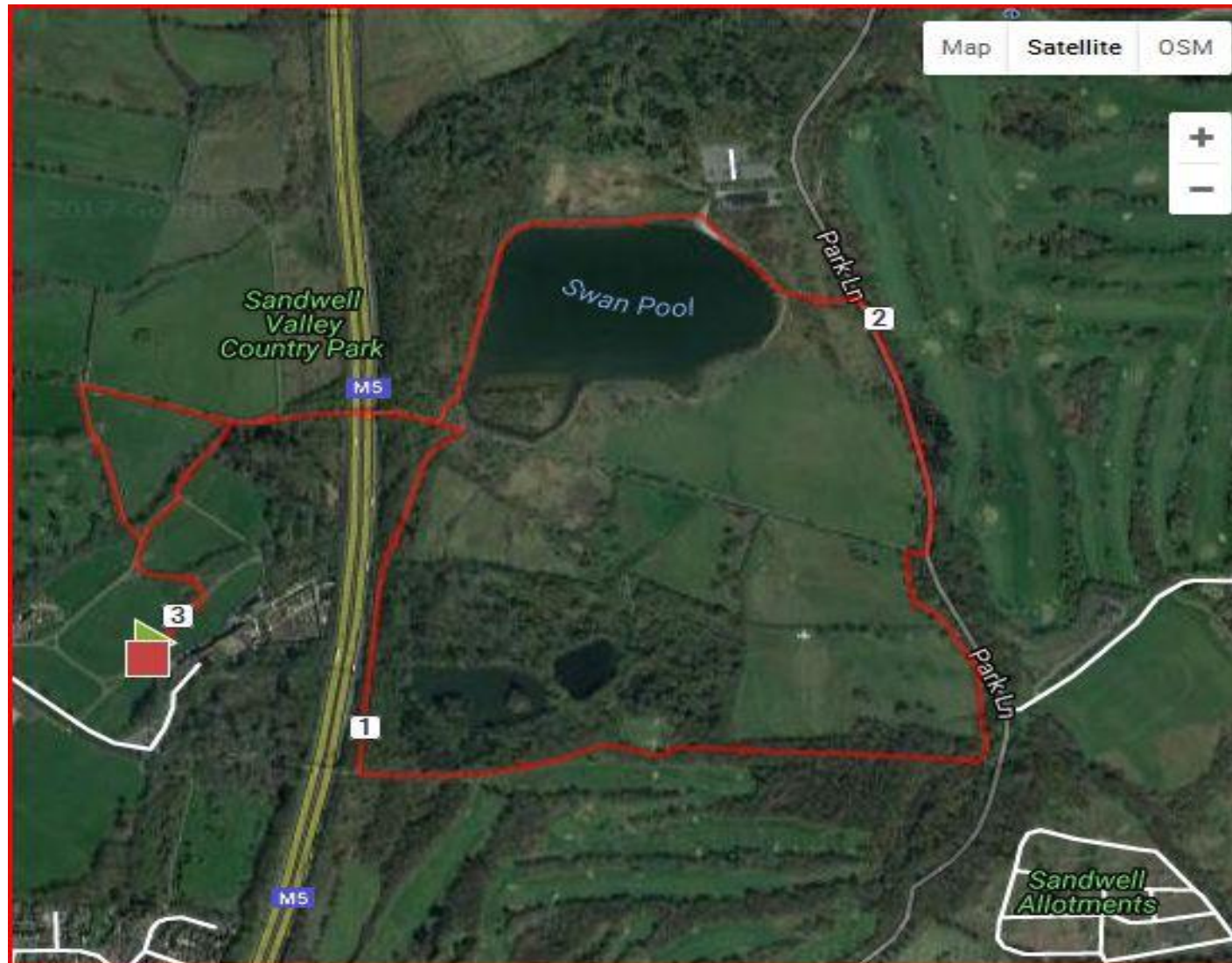
The Albion Foundation Events Team

0755 130 8068

lamillar@icloud.com



- Sandwell Valley Country Park - 5K Colour Run Course



- **Sandwell Valley Country Park - Risk Assessment**
Please Read Carefully
Go to Next Page

General Risk Assessment Form 001a

Risk Assessment No. **SVRA001**

Location **Sandwell Valley Park Farm Visitors Centres**

The Activity/Equipment/Machinery/Vehicles/
Agents/Substances etc involved

Site Activity at Sandwell Park Farm

Assessed
by **Matt Darby/Andy Pearsall**

Approved by
manager **Cherie Lumby**

People involved in risk
assessment

Matt Darby/Andy Pearsall

Date **22 April 2016**

Review
date **April 2017**

Risk assessment scoring guide

Consequence or severity = C		Likelihood (chance of it happening) = L	
1	Insignificant - no injury or illness	1	Very unlikely (1 in a million chance)
2	Minor – injury/illness needing first aid	2	Unlikely (1 in 100,000 chance)
3	Moderate – up to 3 days' absence	3	Fairly likely (1 in 10,000 chance)
4	Major – more than 3 days' absence	4	Likely (1 in 1,000 chance)
5	Catastrophic – death	5	Very likely (1 in 100 chance)

Unacceptable - risks rated 17 to 25. Stop the activity and make immediate improvements.

Tolerable - risks rated 10 to 16. Look to improve within specified timescale.

Adequate - risks rated 5 to 9. Look to improve at next review.

Acceptable - risks rated 1 to 4. No further action, but ensure controls are maintained.

[ILO: UNCLASSIFIED]

General Risk Assessment Form 001a

Hazard and effect	People at risk	Existing workplace precautions	Existing risk control systems	Risk assessment		
				C	L	Risk (C X L)
1.Outbreak of Fire in buildings and on open land. Smoke inhalation, burns, death and damage to property.	Employees, volunteers, visitors, contractors, Delivery personnel.	Audible fire alarms. All employees are basic fire safety Competent. Evacuation procedure, Evac chair, fire assembly points.	Fire risk assessment SVRA002. Emergency fire procedures will include the evacuation of animals. Maintained fire alarm system. Weekly tests and annual drills. Monitoring and inspections. Training refreshers. Hot works permits.	1	4	4
2. First aid occurrences	Employees, volunteers, visitors, contractors,	Competent employees can be summoned from Reception, first aid equipment and defibrillator located in the staff mess room near reception. Contact emergency services.	Risk assessment SVRA003. Training refreshers. First aid equipment checks. Accident report form 012a to be completed. All first aiders have access to a computer to complete submission of online reporting form.	2	4	8
3. Violence and Aggression. Injuries, muscular	Employees, volunteers, visitors, contractors,	Staff have undergone violence and aggression training. All staff have a means of communication radio/mobile phone. CCTV in some	Serious Incidents Data base notifications. Regularly share information with police via	3	3	9

[ILO: UNCLASSIFIED]

General Risk Assessment Form 001a

Hazard and effect	People at risk	Existing workplace precautions	Existing risk control systems	Risk assessment		
				C	L	Risk (C X L)
skeletal, phycological.		areas on site. Reporting incidents immediately to the police.	Countryside Watch and other media. Councils 012V form completed for all V&A incidents.			
4. Movement of vehicles and people. Slips, Trips, Falls. Crush, impact injuries and damage.	Employees, volunteers, visitors, contractors, Delivery personnel.	Roadways, footpaths, bridges, gates, car parks, traffic calming, speed limits, restricted access areas, signage and road markings. Overflow car parks available for high volumes of traffic. Temporary signage to direct traffic flow. Concessions have designated parking areas and are encouraged to stay in one place.	Monitoring and inspections. Repairs and maintenance. Speed limited to 15mph on the roadways and 5mph in pedestrian areas/paths. All gates to be kept closed	2	4	8
5. Use of workplace Machinery . Slips, Trips, Falls. Crush, entanglement, impact injuries and damage.	Employees, volunteers, visitors, contractors,	Competent employees, specific risk assessments, flashing beacons to be used where fitted. Correct PPE identified per machine with noise risk assessment. Access restrictions employed to segregate visitors from work area.	Risk assessments specific to machinery. Monitoring and inspections. Seat belts to be worn. Speed limited to 15mph on the roadways and 5mph in pedestrian areas/paths where applicable. Arrangements in place where possible to segregate machinery and visitors.	3	4	12

[ILO: UNCLASSIFIED]

General Risk Assessment Form 001a

Hazard and effect	People at risk	Existing workplace precautions	Existing risk control systems	Risk assessment		
				C	L	Risk (C X L)
6. Use of electrical equipment. Electrocution, burns, fire.	Employees, visitors, contractors	All equipment must be visually inspected for any damage including cables and plugs. Only 110v equipment to be used outdoors.	Annual PAT testing of equipment. 5 year fixed wiring inspection completed.	5	2	10
7. Animals, livestock. Crush, bites, impalement, infections.	Employees, volunteers, visitors, contractors,	Site rules signage. Restricted access, dogs should be kept on a lead where animals are present, dog waste bins. Animal handling system's in use. Animal movements kept to minimum and only outside peak times. Temporary barrier systems available. Livestock transporter on site for longer distances. Padlock secured stock fields. Breed selection taken consideration and stocking density.	Competent employees, specific risk assessments and Visitor information Risk assessment review. Monitoring and inspections. Guide dogs only in the visitor centre. DEFRA legislation and veterinary services maintained.	2	4	8
8. Zoonosis. Animal born Infectious diseases from petting, cross contamination, poor hygiene.	Employees, volunteers, visitors, contractors,	No food or drink to be consumed around livestock, when working or petting animals, areas that contain animals or substances (feeds/equipment) relating to the farms other than in specified areas. These are staff welfare facilities, picnic areas, tearooms, vending areas. In house cleaner employed.	Hand wash facilities available. Monitoring of facilities. Signage to encourage hand washing. Signage to advise on specific diseases relating to certain animals and times of year. Laundry facilities on-site and	4	3	12

[ILO: UNCLASSIFIED]

General Risk Assessment Form 001a

Hazard and effect	People at risk	Existing workplace precautions	Existing risk control systems	Risk assessment		
				C	L	Risk (C X L)
		Replenishment of hygiene consumables.	showers provided. All areas to be inspected prior to undertaking any activities for evidence of fouling by animals. Pest Control contract in place. Env' Hea' Ser' periodic independent inspections in place.			
9. Open water, ice and water borne craft. Drowning, exposure to low temperatures and disease. Impact injuries.	Employees, volunteers, visitors, contractors,	Competent employees, Visitor information, site rules signage, defect reporting procedure. Throw lines at swan pool. Seasonal signage to display danger thin ice. Monitor weather.	Corporate water safety policy. Parks and Green Spaces Health and safety and Water Safety Group. Training refreshers. Monitoring and inspections. Audits. Risk assessment in place (SVRA005) Daily monitoring regime in place for Swan Pool. Signage includes do's, don'ts and emergency procedures. Procedure in place for group activities e.g. ask for risk assessment, public	2	4	8

[ILO: UNCLASSIFIED]

General Risk Assessment Form 001a

Hazard and effect	People at risk	Existing workplace precautions	Existing risk control systems	Risk assessment		
				C	L	Risk (C X L)
			liability insurance and competency. Emergency procedures in place. Signed up for Met Office weather alerts.			
10. Management of local nature reserves, woodland and countryside. Slips, Trips, Falls. Crush, impact injuries and damage. Falling trees or branches.	Employees, volunteers, visitors, contractors,	Competent employees, signage, defect reporting procedure. Regular maintenance taking place weekly. See also Open Water, outbreak of fire, movement of vehicles and people	Monitoring and inspections. Tree surveys, reports and audits.	2	4	8
11. Facilities management for example cleaning, spills, defects to buildings and facilities causing Slips, Trips, Falls. Crush, impact injuries	Employees, volunteers, visitors, contractors, Delivery personnel.	Competent employees, signage, defect reporting procedure. Mainline high pressure fuel pipeline intersects across Sandwell Valley Country Park information procedure and plans. Regular maintenance taking place. Signage in place. Property maintenance provide emergency repairs/ repairs. Equipment on-site to deal with spills	Monitoring and inspections. Repairs and maintenance. Risk assessment reviews. Competency training programme in place. Alarms covering fire and intruder security in place. CCTV present in some areas. Regular testing	3	4	12

[ILO: UNCLASSIFIED]

General Risk Assessment Form 001a

Hazard and effect	People at risk	Existing workplace precautions	Existing risk control systems	Risk assessment		
				C	L	Risk (C X L)
and damage.		are body fluids kit and fuel spillage kit.	regime in place periodic electrical inspections, legionella tests and PAT testing. Risk Assessments for cleaning (Cleaning Risk Assessments folder 004)			
12. Visitor activities: Educational. Rambling and walking. Water sports Cycling Sports activities Adventure playgrounds. Trailer rides High rope Ariel adventure Tea rooms Shops Farm, fairgrounds and gardens Function rooms	Employees, volunteers, visitors, contractors, Delivery personnel.	Managed activities; High Rope Adventure's and Valley Cycles. Clubs arranged events. Visitor information, site rules signage. Specific risk assessments. Defect reporting procedures. All SMBC vehicles and equipment undergoes regular maintenance and checks. All non SMBC vehicles and equipment to provide relevant certification.	Competency training programme in place. Monitoring and inspections. Repairs and maintenance. Special event briefings. External inspections by Environmental Health, DEFRA. Inspections and checks in place for relevant industry legal requirements e.g. PIPPA's and ADIP's	3	4	12

[ILO: UNCLASSIFIED]

General Risk Assessment Form 001a

Hazard and effect	People at risk	Existing workplace precautions	Existing risk control systems	Risk assessment		
				C	L	Risk (C X L)
Special events. Slips, Trips, Falls. Crush, impact injuries and damage.						

[ILO: UNCLASSIFIED]



For any enquiries contact Linda:
The Albion Foundation Events Team
0755 130 8068
lamillar@icloud.com

