

Where Do You Fit In?

Both sower and reaper get to celebrate together because God uses their hard work to bring in the harvest. If you haven't yet joined the work God has called CEM to do, please consider becoming a supporter through your prayers and financial gifts.

Visit our website to see all the ways you can support this vital ministry!

- Donate online with either a special gift or a recurring monthly gift.
- Give through your church.
- Send a check in the mail.
- Leave a legacy through the CEM Endowment Fund - Remembrance Giving, Gift of Property, Bequest of Property Through a Will, Charitable Remainders.

www.cemchurches.com/donate



"My food," said Jesus, "is to do the will of him who sent me and to finish his work. Don't you have a saying, 'It's still four months until harvest'? I tell you, open your eyes and look at the fields! They are ripe for harvest. Even now the one who reaps draws a wage and harvests a crop for eternal life, so that the sower and the reaper may be glad together." John 4:34-36

CEM exists to start new church-planting churches by recruiting and developing church planters, supporters and leaders, in order to spread God's Word to all.



Christian Evangelistic Mission

Mike Knight, Executive Director
mikeknight@cemchurches.com
www.cemchurches.com
facebook.com/cemchurches
PO Box 1445 • Ankeny, IA 50021



*One plants...
One waters...
God makes it grow.
1 Corinthians 3:6-9*



At CEM, we passionately desire everyone to have the freedom to connect with God through His Son, Jesus Christ. The way we accomplish this is by starting new independent Christian churches founded in the Restoration Movement. We want people to understand God's great love for them, and consequently find freedom in Christ.

Why Do We Exist?

The population of Iowa is currently over three million people with only 123 independent Restoration Movement Christian Churches.



We need to plant churches in our big cities and suburbs. For example, in the Greater Des Moines area only 1 in 10 people go to any kind of church of a population of about 600,000. We also need to start new churches in the country. One third of our state population (3 million) live in small towns of less than 2,000 people. That is one million people scattered in rural areas. People in Iowa need Jesus.



How Resources Are Used

Since 1957, CEM has a proven track record of starting new independent Christian churches. Our board of directors is completely voluntary so that all monetary gifts given to CEM go toward the church planting process. The executive director, Mike Knight, spends much of his time traveling throughout the state seeking church planting opportunities by making new relationships and building existing ones. He is available to churches for encouragement and leadership training. He also encourages and follows up with our new church planters and invests in recruiting potential planters. Our church planters' salaries are paid by CEM for at least two years. This period gives the internal structure of the new church time to prepare to take over this responsibility.



Bringing the Gospel of Jesus Christ to those in Iowa who need to know God's love.

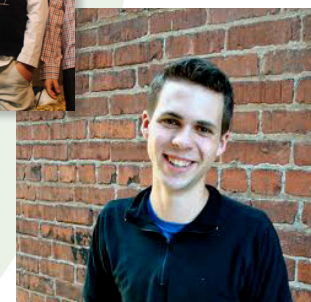


Events

CEM hosts a variety of events for people like you to get involved! Opportunities such as charity golf tournaments, RAGBRAI and more are presented annually.

CEM Director, Mike Knight, also offers leadership training for churches and ministries, and is available to coach ministers.

Whether you support us with your finances, by participating in the event, or praying for God's blessing, any level of involvement is appreciated!



Keep up to date on all that's happening by visiting the Events page on our website!
cemchurches.com