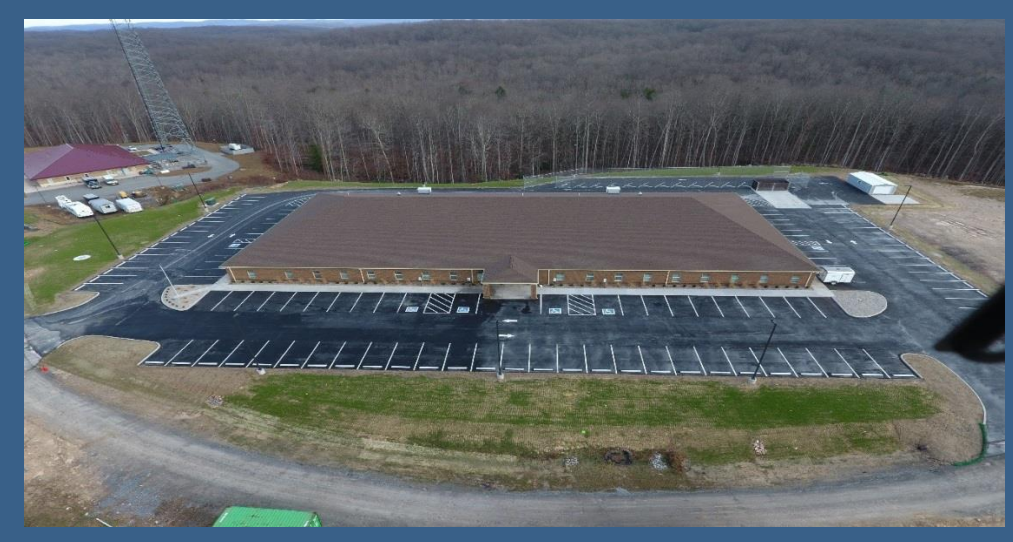




# Oak Hill DEP Building

## Swope Construction Co.



### Project Features:

- 27,800 Sq. Ft. Facility
- Brick Exterior
- 1,200 Foot Fiber Optic Cable System
- Five & a Half Month Completion Period
- Full Perimeter Parking Area for DEP Employees
- 6,939 Total Man Hours
- Design Build Project

### Institutional: Less than \$5 Million

Construction Started on the new WV DEP building in Oak Hill, WV on June 30<sup>th</sup>, 2016 after Swope Construction was awarded the general construction phase. This facility acts as another office for the WV DEP and provides the Fayetteville community with service and awareness to the area.

The construction process was completed with approximately five & a half months of hard-working & determined crew members from Swope Construction, Co. There were a

number of challenges presented when construction started. After digging, crews realized that clay was beneath the surface. The problem was fixed with bedrock, making a firmer & more efficient foundation for the facility. There were also major underground utilities that needed rerouting.



### Safety and Design

Swope Construction worked with ABCWV member, The Thrasher Group, throughout the construction process. This 28,000-sq. ft. facility has a considerable amount of space which includes a large four-sided parking lot. A 1200-foot fiber optic cable was required to sustain the facility routing systems.

With a final completion date of December of 2016, this project was another successful completion with a determined crew and has led to numerous taxpayer funded projects resulting in awards of such categories.

### Project Duration:

- Six Months. Construction began in June of 2016 & was completed in December of that same year.

### Project Safety:

- Swope Construction Co. recorded no safety related incidents during the project's duration.
- Swope Construction Co. held weekly toolbox safety meetings.

**Contract Value: \$3,706,191**

### ABC Members Involved:

The Thrasher Group

